

7. Find all the common multiples of 8 and 9 that are less than 100.

8 16 24 32 40 48  
56 64 72 80 88 96

9 18 27 36 45 54  
63 72 81 90 99

8. Two TV movies start at 8:00 P.M.  
• One channel airs commercials every 6 min.  
• The other channel airs commercials every 9 min.  
When will the two channels start commercial breaks at the same time?

6 12 18 24 30  
9 18 27

Same time after 18 min

8:18 pm



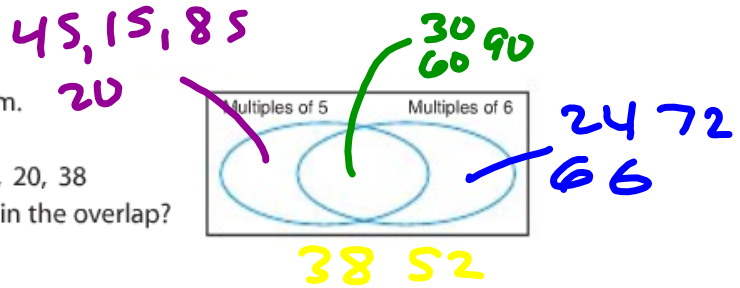
9. A spider has 8 legs. An ant has 6 legs. There are a group of spiders and a group of ants. The groups have equal numbers of legs. What is the least number of spiders and ants in each group? Show your work.



Ant	6	12	18	24	30	36
Spider	8	16	24	30	38	

3 Spider  
4 Ants

10. Make a large copy of this Venn diagram.  
Sort these numbers.  
45, 24, 52, 30, 66, 15, 85, 90, 72, 60, 20, 38  
What can you say about the numbers in the overlap?



5 10 15 20 25 30  
 35 40 45 50 55 60  
 65 70 75 80 85 90

6 12 18 24 30 36 42  
 48 54 60 66 72 78 84  
 90

11. Taho plays shinny every 2 days. He plays lacrosse every 3 days. Suppose Taho plays shinny and plays lacrosse on October 1. What are the next 3 dates on which he will play shinny and play lacrosse? Explain how you know.



6, 12, 18 days

Oct	7
	13
	19

2 4 6 8 10 12 14 16 18  
 20 22 24 26 28 30

3 6 9 12 15 18 21 24  
 27 30 33 36

12. Find the first 2 common multiples of 36 and 48.

144  
288

36   72   108   144   180  
216   252   288   324   360

48   96   144   192   240   288  
336   384

13. Which numbers are common multiples of 8 and 3?

How did you find out?

a) 32

b) 72

c) 48

d) 54

e) 66

f) 96

8 16 24 32  
 40 48 56 64  
 72 80 88 96

3 6 9 12  
 15 18 21 24  
 27 30 33 36  
 39 42 45 48  
 51 54 57 60  
 63 66 69 72  
 75 78 81 84  
 87 90 93 96

14. Veggie patties are sold in packages of 5. •  
 Buns are sold in packages of 8. •  
 You need about 125 veggie burgers for a school barbecue.  
 You do not want any patties or buns left over.  
 How many packages of each should you buy?  
 What strategy did you use to find out?

8 16 24 32 40 48 56 64  
 72 80 88 96 104 112 120  
 128 136 144 152 160 168

5 10 15 20 25 30 35 40 45 50  
 55 60 65 70 75 80 85 90 95 100  
 105 110 115 120 125 130 135 140 145  
 150 155 160 165 170 175 180 185

24 packages of patties  
 15 packages of buns

(120)



15. Kevin, Yone, and Miroki work part-time at the YMCA in Kamloops.

- Kevin works every second day. •
- Yone works every third day. •
- Miroki works every fourth day. •

Today, they worked together.

When will they work together again?

Explain how you know.

In 12 days

2 4 6 8 10 12 14 16 18  
3 6 9 12 15 18 21 24  
4 8 12 16 20 24

Determine THE MULTIPLE **LEAST**  
**COMMON** FOR 6 AND 7

6

7

6    12   18   24   30   36   42  
      48   54

7    14   21   28   35   42   49

LCM = 42

## Attachments

---

David Copperfield.ppt