



Wed. Feb 14

Warm Up

1. Entire to Mixed:

$$\begin{aligned} \text{a) } \sqrt{32} &= \sqrt{16 \times 2} \\ &= \sqrt{16} \times \sqrt{2} \\ &= 4\sqrt{2} \end{aligned}$$

$$\begin{aligned} &\sqrt{8 \times 4} \\ &\sqrt{4 \times 8} \\ &2\sqrt{8} \end{aligned}$$

$$\begin{aligned} &2\sqrt{4 \times 2} \\ &2 \times 2 \times \sqrt{2} = 4\sqrt{2} \end{aligned}$$

$$\begin{aligned} \text{b) } \sqrt[3]{648} &= \sqrt[3]{216 \times 3} \\ &= \sqrt[3]{216} \times \sqrt[3]{3} \\ &= 6\sqrt[3]{3} \end{aligned}$$

2. Mixed to Entire:

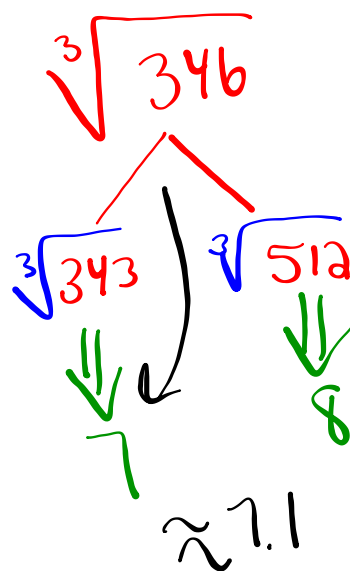
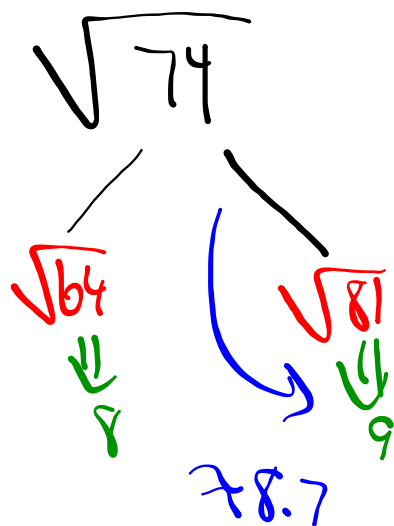
$$\begin{aligned} \text{a) } 4\sqrt{3} &= \sqrt{4^2 \times 3} \\ &= \sqrt{16 \times 3} \\ &= \sqrt{48} \end{aligned}$$

$$\begin{aligned} \text{b) } 3\sqrt[3]{2} &= \sqrt[3]{3^3 \times 2} \\ &= \sqrt[3]{27 \times 2} \\ &= \sqrt[3]{54} \end{aligned}$$

$$\begin{aligned} \text{c) } 2\sqrt[5]{2} &= \sqrt[5]{2^5 \times 2} \\ &= \sqrt[5]{32 \times 2} \\ &= \sqrt[5]{64} \end{aligned}$$

2 on Quiz

Estimate



QUIZ TIME

After Quiz is handed in work on the following
class/ **Homework**

Page: 218-219

Questions:

10 (g,h,i) 11 (j) 12 (a,c,e,g,i)

19, 20, 21, 22, 23