

Sept 13

Warm Up

1. $4 \times 5 = 20$
2. $7 \times 3 = 21$
3. $2 \times 9 = 18$
4. $6 \times 8 = 48$
5. $1 \times 4 = 4$
6. $5 \times 7 = 35$
7. $3 \times 6 = 18$
8. $9 \times 2 = 18$
9. $8 \times 1 = 8$
10. $7 \times 9 = 63$
11. $4 \times 3 = 12$
12. $2 \times 5 = 10$
13. $6 \times 7 = 42$
14. $9 \times 4 = 36$
15. $8 \times 6 = 48$

16. $3 \times 9 = 27$
17. $5 \times 2 = 10$
18. $7 \times 4 = 28$
19. $1 \times 8 = 8$
20. $6 \times 5 = 30$
21. $4 \times 9 = 36$
22. $2 \times 7 = 14$
23. $8 \times 3 = 24$
24. $5 \times 6 = 30$
25. $9 \times 8 = 72$
26. $3 \times 4 = 12$
27. $7 \times 5 = 35$
28. $1 \times 6 = 6$
29. $8 \times 2 = 16$
30. $6 \times 9 = 54$

31. $5 \times 3 = 15$
32. $2 \times 4 = 8$
33. $9 \times 7 = 63$
34. $4 \times 6 = 24$
35. $8 \times 9 = 72$
36. $3 \times 5 = 15$
37. $7 \times 2 = 14$
38. $1 \times 3 = 3$
39. $6 \times 4 = 24$
40. $9 \times 5 = 45$
41. $5 \times 8 = 40$
42. $2 \times 3 = 6$
43. $8 \times 7 = 56$
44. $4 \times 2 = 8$
45. $6 \times 1 = 6$

46. $9 \times 6 = 54$
47. $3 \times 2 = 6$
48. $7 \times 8 = 56$
49. $1 \times 9 = 9$
50. $8 \times 4 = 32$

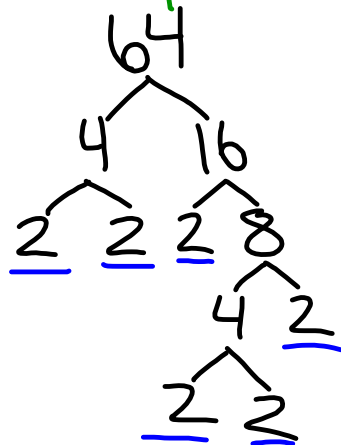
50/50

1. 4×5
2. 6×3
3. 7×2
- 4.

List Multiples of 2 upto 30.

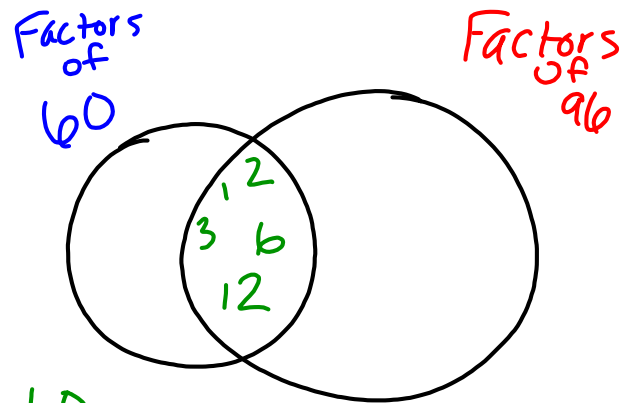
2, 4, 6, 8, 10, 12, 14, 16, 18,
20, 22, 24, 26, 28, 30

Find the prime factors of 64



Prime
Factors
2

$$2 \times 2 \times 2 \times 2 \times 2 \times 2 = 64$$



60

① $\times 60 = 60$

② $\times 30 = 60$

③ $\times 20 = 60$

4 $\times 15 = 60$

5 $\times 12 = 60$

⑥ $\times 10 = 60$

96

① $\times 96 = 96$

② $\times 48 = 96$

③ $\times 32 = 96$

⑥ $\times 16 = 96$

8 $\times 12 = 96$