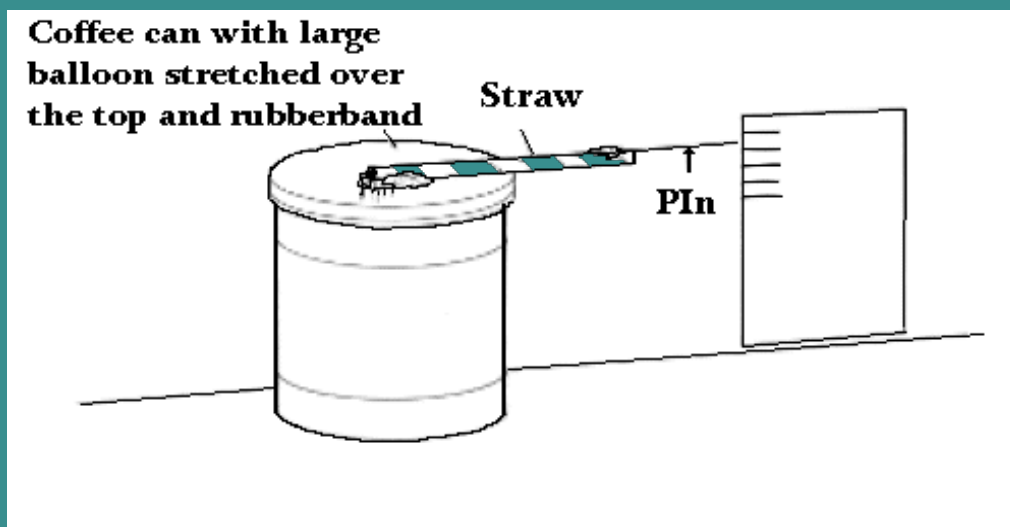


Making Our Own Barometer



Cut a large piece of the balloon and stretch it over the coffee can. Hold the balloon in place with a rubber band stretched around the can, over the balloon. Make sure there is a tight seal around the rubber band. Any air leaks around the piece of balloon will affect how well your barometer will work.

Use a little glue (not hot melt) and attach the straw to the piece of balloon over the can. Then use a little more glue and attach the pin to the other end of the straw (see diagram.)

Take a piece of paper and place some regularly spaced lines on it.

Set up the can and paper as shown in the diagram. Outside will work better than inside.

How Does It Work?

When air pressure increases, it exerts more pressure on the balloon, pushing it down and the pin upwards on the scale. When the air pressure decreases, the pressure lessens on the balloon and a low reading is recorded.

In general, low air pressure means rainy or cloudy weather. When the barometer drops, a storm may be approaching. High air pressure usually indicates clear weather.

<https://www.wgrz.com/article/weather/theyre-back-what-a-recent-sighting-of-a-woolly-bear-caterpillar-has-to-do-with-this-winter/71-b8461b0f-22a4-4843-b491-d87462c38ebc>

Weather

BUT First...

Notes:

Different Ways We Predict Weather

- Aching of bones sometimes tells us that colder weather or a storm is coming
- Flags Blowing in the wind shows us that it is windy
- "Red Sky at night sailors delight" or "Red sky in Morn', sailors take warning"

[Can animals help us predict the weather? \(youtube.com\)](#)

-You think of some

[They're back! What a recent sighting of a Woolly Bear Caterpillar has to do with this winter | wgrz.com](#)

Who is Predicting the Weather?

Farmers

Sailors

Bus Drivers

Construction Workers

Pilots

Travellers

and many many more

Weather Sayings of the old Sailors



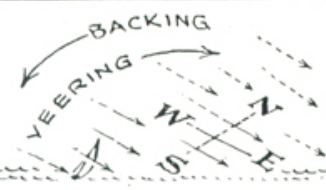
DEW INDICATES A GOOD DAY AHEAD! A DRY MORNING IS SIGN OF SHOWERS.



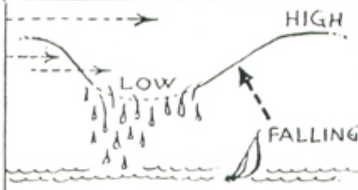
DISTANT SHORES LOOM UP NEARER BEFORE RAIN BECAUSE OF THINNING OF THE AIR.



LARGE HALO AROUND THE MOON INDICATES CIRRUS CLOUDFORM & WARM FRONT RAIN.



A VEERING WIND IS SIGN OF FAIR WEATHER-BACKING WIND MEANS RAIN.



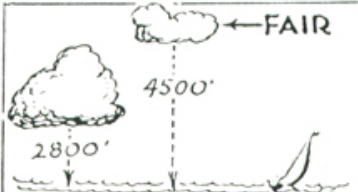
FALLING BAROMETER INDICATES NEARING "LOW" AREA, WITH WINDS AND RAIN.



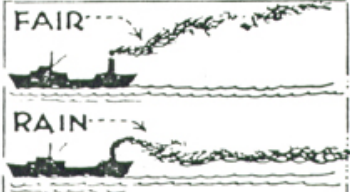
RAIN IS MOST FREQUENT AT THE TURN OF THE TIDE (IF AIR IS HUMID)



RAINBOW TO WINDWARD, RAIN AHEAD. RAINBOW TO LEEWARD, RAINS END.



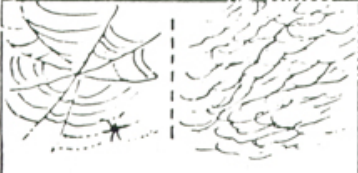
HIGHER THE CLOUDS, FINER THE WEATHER. LOWERING CEILINGS FORETELL A RAIN.



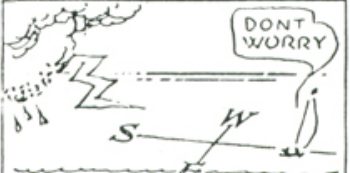
SMOKE THAT CURLS DOWNWARD AND LINGERS, MEANS A NEARING STORM.



THINNING AIR IS HARDER TO FLY IN. BIRDS "SIT IT OUT" BEFORE A STORM



SKY FULL OF WEBBY CIRRUS FORETELLS DISTURBANCE AND RAINS ON ITS WAY



LIGHTNING FROM THE W. OR N.W. WILL REACH YOU; FROM S. OR S.E WILL PASS

Crell Sloan

Attachments

Average Temperature Assignment Grade 7 Science.docx