

What is a scientist (Draw a picture, color it and set it aside)

What does diversity of life mean to you? (Draw a picture on a different piece of paper)

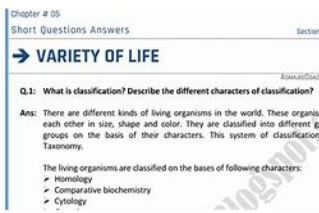
↓
Bunch of different Stuff of Life
"Variety of Living things"

This is a google search for "Scientist"

What do you notice?



This is a google search for "Variety of Life"



Biodiversity

•The variety of life on Earth.

•Includes three types:

- Genetic diversity: Differences in DNA among individuals
- Species diversity: Variety of species in a given area
- Ecosystem diversity: Variety of habitats, ecosystems, communities.

Types of Life Insurance

	Term Life	Whole Life	Universal Life	Variable Universal Life
Death Benefit	*	*	*	*
Tax Advantages	*	*	*	*
Insured by the Market			*	*
Cash Value			*	*
Clear method			*	*
Flexible Payments			*	*



Look closely at the crime scene.

We have one eye witness that has seen the following:

-a male running from the scene but got into car at the corner.

You are the investigator of this crime. Think of questions to ask and who would you ask?
 Let's write this out in detail

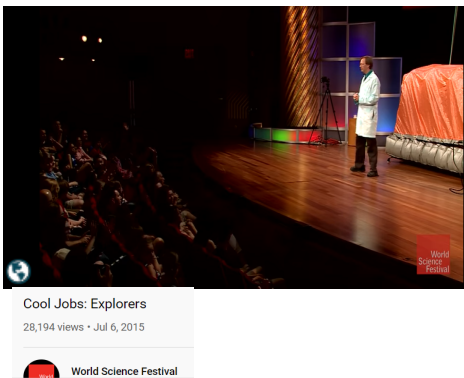


1 hour



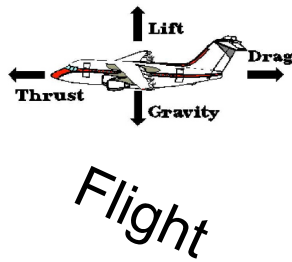
https://www.youtube.com/watch?v=Sd3coOTCh_A&t=3s

[ICON 3D Prints the First Simulated Mars Surface Habitat for NASA Designed by Renowned Architecture Firm BIG-Bjarke Ingels Group | ICON \(iconbuild.com\)](https://www.youtube.com/watch?v=Sd3coOTCh_A&t=3s)



1 hour

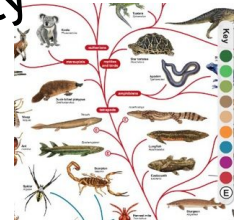
Grade⁶ Science



Science Inquiry



Variety of Life



Review

Scientific Method



Has 7 steps

- 1) Ask a **Question** (It must be **Testable**)
 - Include "Which", "Do/Does", "How", "What", "Why"?
 - To find an answer you must do a test and the retest

- 2) Make a **Hypothesis** - Write what you think you will find out, and why you think this. (or what you think the answer will be). Is there a way to test your hypothesis.
 - You now have to design an experiment to test your hypothesis

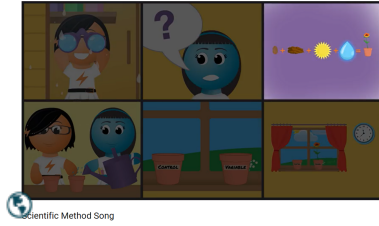
- 3) **Design an Experiment** - what are you going to do to test your hypothesis. Here you must state the variables. (SEE NEXT PAGE)

- 4) **List Materials** - list all the materials that you will use in the investigation

- 5) **Procedure** - Carry out the investigation and make a detailed list of steps in which you followed .

- 6) **Results/observations** - Record what you observed when you carried out the investigation/procedures

- 7a) **Conclusion** - From what you observed how would you answer your original question. Was your hypothesis correct? Give reasons of why or why not.
 - Once you have completed the scientific method you must:
- 7b) **-Communicate** your results and conclusions with others
 - If possible, **relate** what you have learned to the world outside the classroom.



discovery of penicillin (1964)

Discovery of Penicillian (Sharing Information)



100 Years Ago, a Miracle Drug Saved Millions of Children—and Created a Powerful Myth

<https://www.youtube.com/watch?v=O9lxht8D9HI>

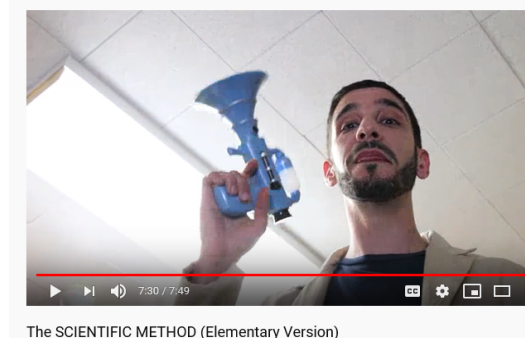


36 min black and white

<https://www.youtube.com/watch?v=JA7jVqYOf2k>

Let's see an experiment

Pause as we go



<https://www.youtube.com/watch?v=NmNpzteP434>



Does sugar cause pop to sink?

Hypothesis - Sugar will cause that pop to be heavier and sink because it has a weight of 34 grams on the can

Materials

1- tank

Fill the tank full of water

5- pop cans (full) Reg coke, Diet coke, Diet pepsi

Grape Pop

Sparkling water

- At least 18 pack of sugar

Procedures- Fill the tank full of water, at room temp. Then add the pop cans in, at one at a time. Record which can sinks or floats.

Observation - Reg coke, grape pop sank and the diet coke, diet pepsi and sparkling water floated.

Conclusion - Is that the drinks that contain sugar will sink and the drinks that are diet (no sugar) will float.

Attachments

Unit 1 Space Test Outline.notebook

Simpson Variables of experiments worksheet.docx

SCIENCE PRACTICE ASSESSMENT - Grade 6.pdf

SCIENCE PRACTICE ASSESSMENT ASD-W - Grade 6.pdf