

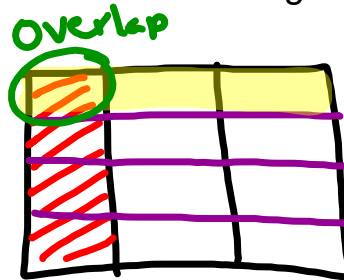
Warm Up Grade 8

Nov. 29, 2023

Use grid paper and model

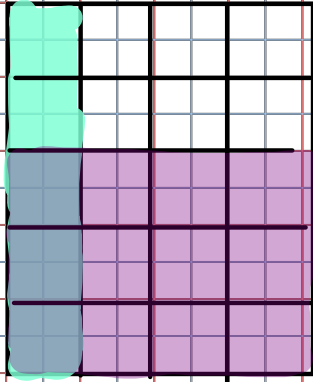
- 1) One-third of the grade 8 students tried out for a talent show. One-quarter of these students were successful. What fraction of the grade 8 students are performing at the show?

$$\frac{1}{3} \times \frac{1}{4} = \frac{1}{12}$$

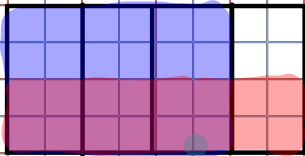


Homework Solutions

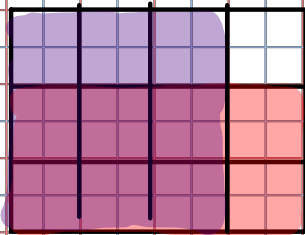
★ 5) $\frac{5}{3} \times \frac{1}{4}$
 $= \frac{5}{12}$



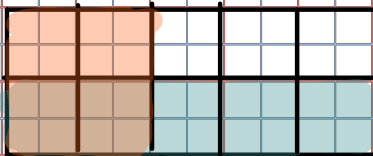
★ 6) $\frac{2}{3} \times \frac{3}{4}$
 $= \frac{6}{12} = \frac{1}{2}$



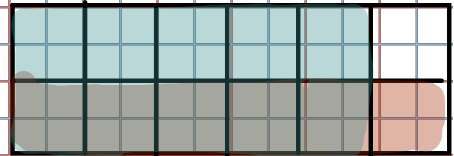
★ 5) $\frac{3}{4} \times \frac{2}{3}$
 $= \frac{6}{12} = \frac{1}{2}$



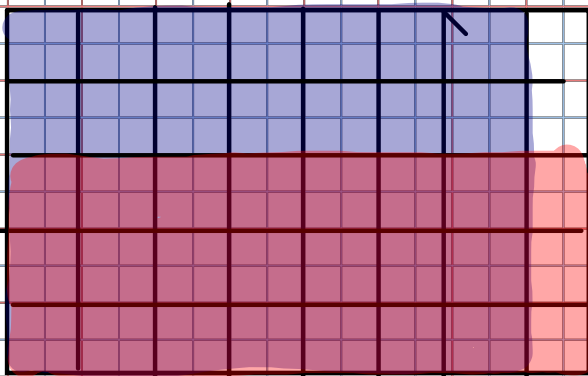
★ 7) $\frac{5}{10} \times \frac{1}{2}$
 $= \frac{5}{20} = \frac{1}{4}$



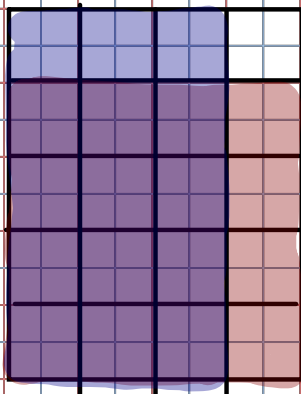
★ 8) $\frac{5}{6} \times \frac{1}{2}$
 $= \frac{5}{12}$



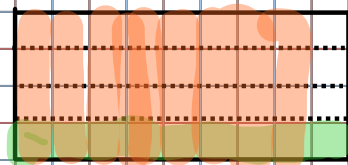
★ 9) $\frac{5}{8} \times \frac{7}{8}$
 $= \frac{35}{64}$



★ 1) $\frac{4}{5} \times \frac{3}{4}$
 $= \frac{12}{20} = \frac{3}{5}$

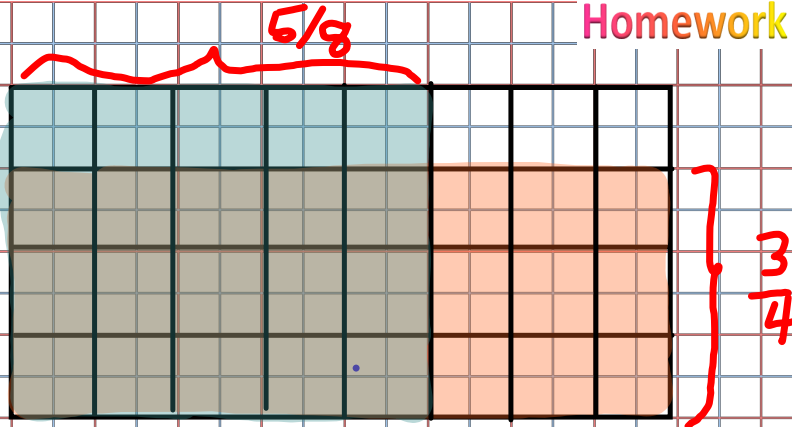


★ 2) $\frac{1}{4} \times \frac{8}{9} = \frac{8}{36} = \frac{2}{9}$

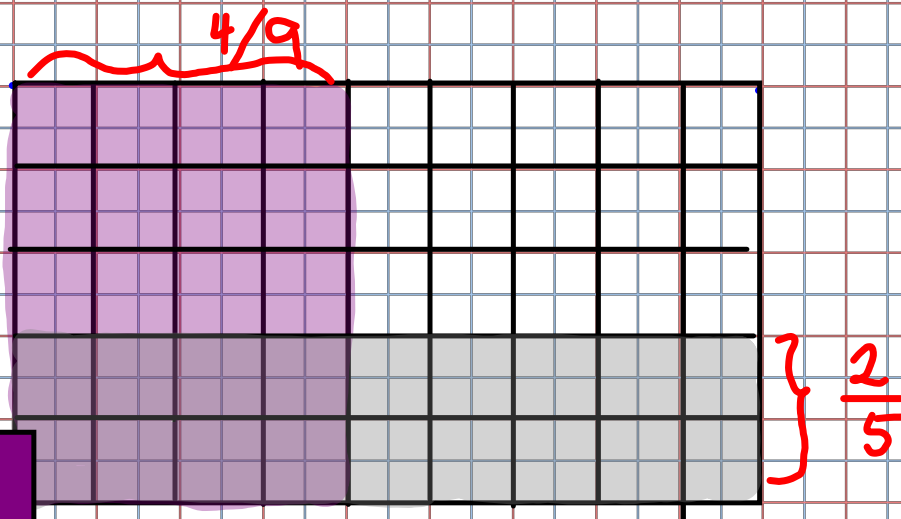


Homework Solutions

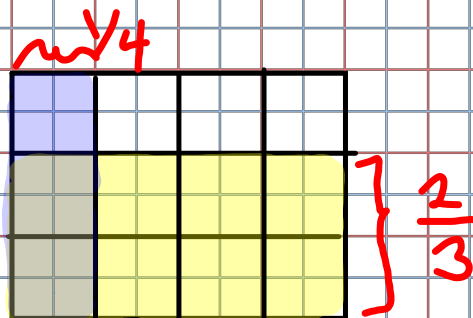
★ 8a) $\frac{3}{4} \times \frac{5}{8}$
 $= \frac{15}{32}$



b) $\frac{4}{9} \times \frac{2}{3}$
 $= \frac{8}{45}$



★ c) $\frac{1}{4} \times \frac{2}{3}$
 $= \frac{2}{12}$
 $= \frac{1}{6}$

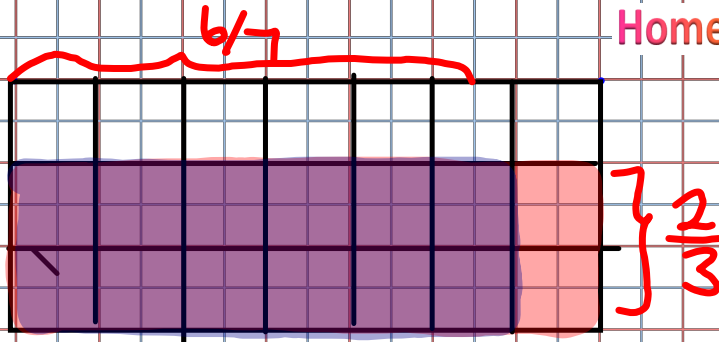


Homework Solutions

$$d) \frac{6}{7} \times \frac{2}{3}$$

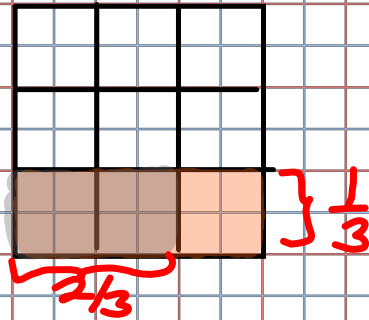
$$= \frac{12}{21}$$

$$= \frac{4}{7}$$



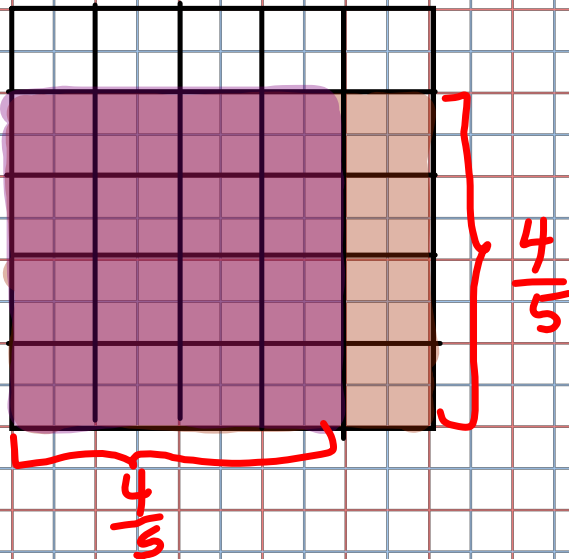
$$e) \frac{2}{3} \times \frac{1}{3}$$

$$= \frac{2}{9}$$



$$f) \frac{4}{5} \times \frac{4}{5}$$

$$= \frac{16}{25}$$



Multiplying Fractions

When you are multiplying fractions, you simply multiply the numerators and multiply the denominators. **(Always Reduce)**
 Either before or after

Ex. $\frac{2}{9} \times \frac{7}{11} = \frac{2 \times 7}{9 \times 11} = \frac{14}{99}$

b) reduce as you go or at end
 $\frac{\cancel{8}^2}{\cancel{15}^3} \times \frac{\cancel{3}^1}{\cancel{4}^2} =$

$$\frac{2}{5} \times \frac{1}{1} = \boxed{\frac{2}{5}}$$

$$\frac{8}{15} \times \frac{3}{4} = \frac{24}{60} \begin{matrix} \div 12 \\ \div 12 \end{matrix} = \boxed{\frac{2}{5}}$$

c) $\frac{5}{12} \times \frac{\cancel{6}^2}{\cancel{7}^1} =$

$$\frac{30}{84} \begin{matrix} \div 6 \\ \div 6 \end{matrix} = \boxed{\frac{5}{14}}$$

$$\frac{5}{2} \times \frac{1}{7}$$

$$= \frac{5}{14}$$

d) $\frac{2}{3} \times \frac{\cancel{15}^5}{\cancel{21}^7} =$

$$\frac{30}{63} \begin{matrix} \div 3 \\ \div 3 \end{matrix} = \frac{10}{21}$$

$$\frac{2}{1} \times \frac{5}{21}$$

$$\frac{10}{21}$$

Multiplying Mixed Fractions

-ALWAYS Change to IMPROPER first

When you multiply mixed numbers, change them to improper fractions first, then multiply the numerators and multiply the denominators.

$$a) 1 \frac{4}{7} \times 2 \frac{1}{6}$$

$$\frac{11}{7} \times \frac{13}{6}$$

$$= \frac{143}{42}$$

$$= 3 \frac{17}{42}$$

$$b) 3 \frac{3}{5} \times 4 \frac{5}{8}$$

$$\frac{18}{5} \times \frac{37}{8}$$

$$\frac{9}{5} \times \frac{37}{4}$$

$$\frac{333}{20}$$

$$= 16 \frac{13}{20}$$

$$\frac{666}{40}$$

$$\frac{333}{20}$$

$$16 \frac{13}{20}$$

Class/Homework

Allie
was here

ab

Page 113 # 13 (Model and answer)

Use Rules

Page 118 #6, #7, #8, #9, #11, #12a

(Don't estimate or model just multiply and reduce)

—

