

Grade 7 MATH Review for Provincial (ch 1 to 3).rtf

Name: _____

Day 1- Ch1 to 3 Review Grade 7

Multiple Choice

Identify the choice that best completes the statement or answers the question.

1. If n represents any term number, write a relation for the term.

Term Number	1	2	3	4	5	6
Term	8	9	10	11	12	13

- a. $7n$ b. $n+2$ c. $n+8$ d. $n+7$

n
(1)
↑
8
add 1
out

2. If n represents any term number, write a relation for the term.

Term Number	1	2	3	4	5	6
Term	5	10	15	20	25	30

- a. $5n$ b. $2n+5$ c. $2n$ d. $n+5$

3. If n represents any term number, write a relation for the term.

Term Number	10	11	12	13	14	15
Term	24	25	26	27	28	29

- a. $n+14$ b. $n+24$ c. $n+10$ d. $14n$

n
 $1(10) \rightarrow 24$
add 14

4. There are n students in a class. Write a relation for the total number of crayons if each student is given 9 crayons.

- a. $9n+9$ b. $n+9$ c. $\frac{n}{9}$ d. $9n$

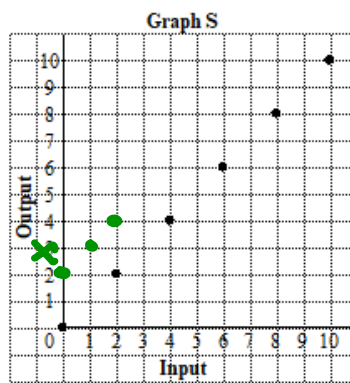
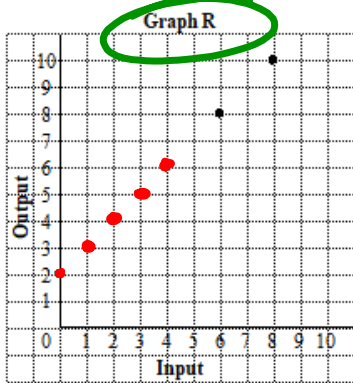
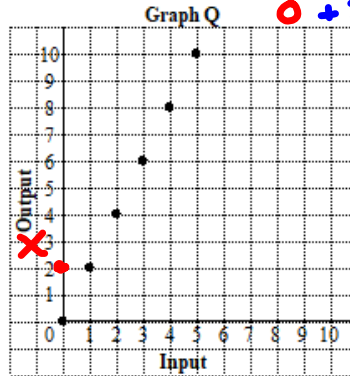
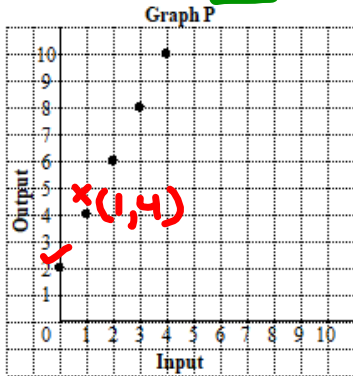
5. Brianna earns $11n$ for each hour she works. Write a relation for her earnings if she works for n hours.
 a. $\$11n$ b. $\$(11n + 11)$ c. $\$(n + 11)$ d. $\$\frac{n}{11}$

6. Complete the table.

Input x	1	2	3	4	5	6
Output $6x + 1$	7	13	19	25	31	37

$$\begin{array}{l}
 x=1 \\
 6x + 1 \\
 6(1) + 1 \\
 6 + 1 \\
 7
 \end{array}
 \quad
 \left.
 \begin{array}{l}
 x=2 \\
 6(2) + 1 \\
 12 + 1 \\
 13
 \end{array}
 \right\}
 \quad
 \left.
 \begin{array}{l}
 x=3 \\
 6(3) + 1 \\
 18 + 1 \\
 19
 \end{array}
 \right\}$$

7. Which graph shows how $x + 2$ is related to x ?



$$\left. \begin{array}{l} x=0 \\ x+2 \\ 0+2 \\ =2 \end{array} \right\} \left. \begin{array}{l} x=1 \\ x+2 \\ 1+2 \\ 3 \end{array} \right\} \left. \begin{array}{l} x=2 \\ x+2 \\ 2+2 \\ 4 \end{array} \right\}$$

x	out
0	2
1	3
2	4
3	5
4	6

- a. Graph R b. Graph Q c. Graph P d. Graph S

8. Write an equation for the sentence.

Five more than a number is 18.

- a. $n + 5 = 18$ b. $n - 5 = 18$ c. $5 - n = 18$ d. $5n = 18$

9. Write an equation for the sentence.

Three less than a number is 10.

- a. $\frac{n}{3} = 10$ b. $n - 3 = 10$ c. $n + 3 = 10$ d. $3 - n = 10$

10. Write an equation for the sentence.

A number divided by 4 is 6.

- a. $\frac{4}{n} = 6$ b. $n - 4 = 6$ c. $4 - n = 6$ d. $\frac{n}{4} = 6$

11. Write an equation for "I subtract 14 from a number. The answer is 21."

- a. $n - 14 = 21$ b. $n + 14 = 21$ c. $14 - n = 21$ d. $\frac{n}{14} = 21$

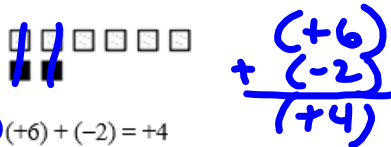
12. Write an equation for the sentence. Twenty-seven less than a number is 24.

after

$$n - 27 = 24$$

$$p - 9 = 20$$

13. Write an equation for the situation.
 Patricia has p posters. She sold 9 and has 20 left.
 a. $p + 20 = 9$ c. $p - 9 = 20$
 b. $p = 20 - 9$ d. $p + 9 = 20$
14. Write an equation for "I multiply a number by 3, then add 8. The answer is 17."
 a. $24n = 17$ b. $11n = 17$ c. $8n + 3 = 17$ d. $3n + 8 = 17$
15. Let one white tile represent +1 and one black tile represent -1.
 What sum does this set of tiles model? Write the addition equation.



- a. $(+6) + (-2) = +4$ c. $(+6) + (+2) = +6$
 b. $(+6) + (+2) = +8$ d. $(-6) + (+2) = -4$
16. Let one white tile represent +1 and one black tile represent -1.
 What sum is modelled by 19 positive tiles and 16 negative tiles?
 a. +35 b. -3 c. +4 d. +3
17. Use coloured tiles to find the sum.
 $(-12) + (+5)$
 a. -17 b. +17 c. +7 d. -7
18. Use coloured tiles to find the sum.
 $(+6) + (-4)$
 a. +2 b. +10 c. -10 d. -2

$$(+19) + (-16) = +3$$

25. No calculators. Find the product. 3.7×0.4

$$\begin{array}{r} 2 \\ 3.7 \\ \times 0.4 \\ \hline 148 \end{array}$$

26. Multiply. 7.79×0.07

$$\begin{array}{r} 5 \\ 7.79 \\ \times 0.07 \\ \hline .5453 \end{array}$$

$$0.5453$$

27. Each sash is 1.65 m long. How much ribbon is needed to make 19 sashes?

- a. 2.065 m b. 3.135 m c. 31.35 m d. 20.65 m

$$\begin{array}{r} 5 \\ 1.65 \\ \times 19 \\ \hline 1485 \\ 1650 \\ \hline 31.35 \end{array}$$

28. Divide. $1.98 \div 0.3$

$$\begin{array}{r} 6.6 \\ 3 \overline{) 19.8} \\ \underline{18} \\ 18 \\ \underline{18} \\ 0 \end{array}$$

29. Divide. $65.28 \div 0.8$

a. 81.6

b. 0.816

c. 816

d. 8.16

$$\begin{array}{r} 81.6 \\ 8 \overline{) 652.8} \\ \underline{64} \\ 12 \\ \underline{12} \\ 8 \\ \underline{8} \\ 0 \end{array}$$

30. Evaluate.

$$7.2 \times 18 \div 6$$

$$81.6 \div 6 = 21.6$$

$$\begin{array}{r} 7.2 \\ \times 18 \\ \hline 576 \\ 720 \\ \hline 129.6 \end{array}$$

$$\begin{array}{r} 21.6 \\ 6 \overline{) 129.6} \\ \underline{12} \\ 9 \\ \underline{18} \\ 116 \\ \underline{114} \\ 26 \\ \underline{24} \\ 20 \\ \underline{20} \\ 0 \end{array}$$

Short Answer

31. There are n players at a tennis camp. Write a relation for the number of tennis balls if each player is given 14 balls and there are 25 balls in reserve.

$$14n + 25$$

32. There are n students in a class. Each student is given 4 stickers and there are 11 stickers left.

a) Write a relation for the total number of stickers.

$$4s + 11$$

b) How many stickers are there if there are 18 students in the class?

$$4(18) + 11$$

$$72 + 11$$

$$83$$

33. Use algebra. Write a relation for the Input/Output table.

Input x	1	2	3	4	5
Output	5	7	9	11	13

$2n + 3$

$2n + 3$

34. Dominique has \$20 in his account and saves \$16 every week.

a) Write a relation to show the amount he has in his account after w weeks.

$16w + 20$

b) How much does he have after 6 weeks?

$16(6) + 20$

$96 + 20$
 $\$116$

35. Add.

$(-6) + (-4)$

same
 (-10)

36. Evaluate $8.9 \times 12 - (8.8 - 3.4)$

$8.9 \times 12 - (5.4)$

$$\begin{array}{r} 8.8 \\ -3.4 \\ \hline 5.4 \end{array}$$

$$\begin{array}{r} 8.9 \\ \times 12 \\ \hline 178 \\ 890 \\ \hline 1068 \end{array}$$

$106.8 - 5.4$

$$\begin{array}{r} 106.8 \\ -5.4 \\ \hline \end{array}$$

101.4

Grade 7 MATH Review for Provincial (ch 1 to 3).rtf