



Warm Up Grade 8

$$\text{a) } \frac{4}{9} \div \frac{3}{8}$$

$$\frac{4}{9} \times \frac{8}{3}$$

$$\frac{32}{27}$$

$$1 \frac{5}{27}$$

$$\text{b) } \frac{16}{21} \div \frac{32}{7}$$

$$\frac{16 \div 16}{21 \div 7} \times \frac{7 \div 7}{32 \div 16}$$

$$\frac{1}{3} \times \frac{1}{2}$$

$$\frac{1}{6}$$

pg 139

4. Number Reciprocal

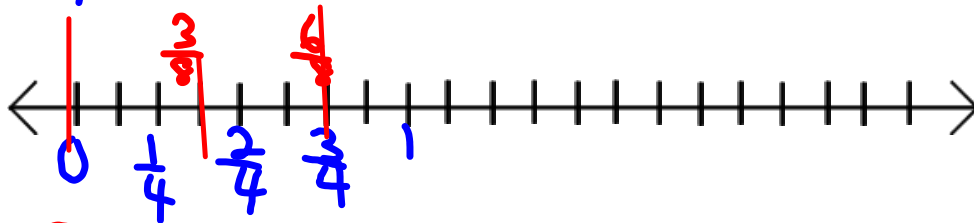
a) $\frac{5}{9} \rightarrow \frac{9}{5}$

b) $\frac{3}{7} \rightarrow \frac{7}{3}$

c) $\frac{7}{8} \rightarrow \frac{8}{7}$

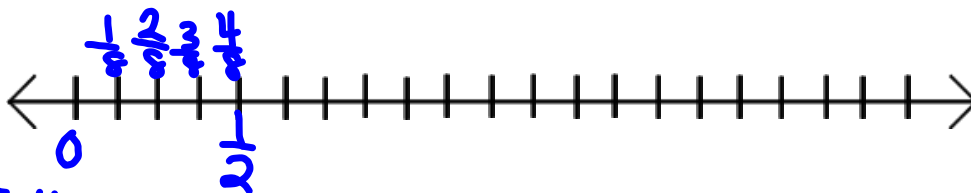
d) $\frac{14}{15} \rightarrow \frac{15}{14}$

5a) $\frac{3}{4} \div \frac{3}{8}$ (How many $\frac{3}{8}$ in $\frac{3}{4}$)



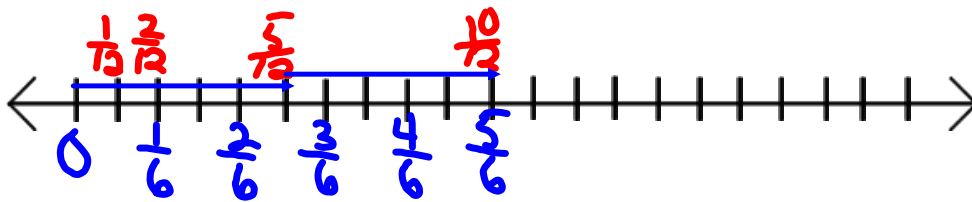
= 2

b) $\frac{1}{2} \div \frac{1}{8}$



= 4

c) $\frac{5}{6} \div \frac{5}{12}$



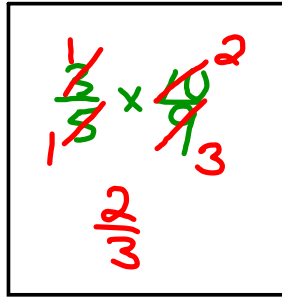
= 2

$$6. \frac{3}{5} \div \frac{9}{10}$$

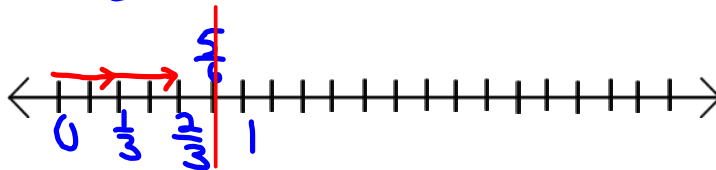
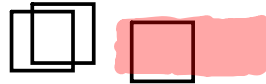
$$= \frac{3}{5} \times \frac{10}{9}$$

$$= \frac{30}{45}$$

$$= \frac{2}{3}$$

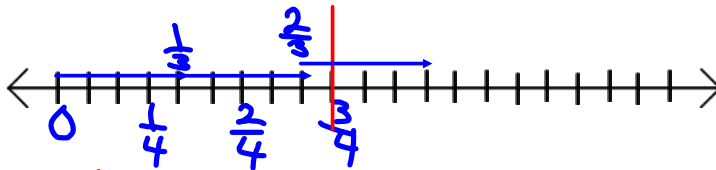


$$7a) \frac{5}{6} \div \frac{1}{2}$$



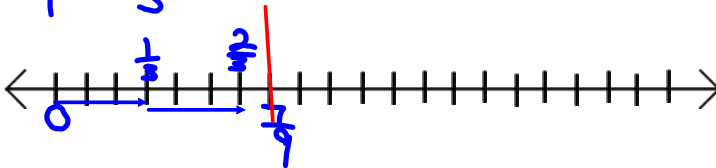
$$= 2\frac{1}{2}$$

$$b) \frac{3}{4} \div \frac{1}{2}$$



$$2\frac{1}{4}$$

$$c) \frac{7}{9} \div \frac{1}{3}$$



$$2\frac{1}{3}$$

$$d) \frac{5}{8} \div \frac{1}{4}$$



$$2\frac{1}{2}$$

8 a) $\frac{7}{10} \div \frac{3}{10}$
 $\frac{7}{10} \times \frac{10}{3} = \frac{70}{30}$
 $\frac{7}{3}$

b) $\frac{5}{9} \div \frac{2}{9}$
 $\frac{5}{9} \times \frac{9}{2} = \frac{45}{18}$
 $\frac{5}{2}$

c) $\frac{3}{5} \div \frac{2}{5}$
 $\frac{3}{5} \times \frac{5}{2} = \frac{15}{10}$
 $\frac{3}{2}$

d) $\frac{4}{5} \div \frac{2}{5}$
 $\frac{4}{5} \times \frac{5}{2} = \frac{20}{10}$
 2

9 a) $\frac{8}{5} \div \frac{3}{4}$
 $\frac{8}{5} \times \frac{4}{3} = \frac{32}{15}$

b) $\frac{9}{10} \div \frac{2}{5}$
 $\frac{9}{10} \times \frac{5}{2} = \frac{45}{20}$
 $\frac{9}{4}$

c) $\frac{7}{2} \div \frac{4}{3}$
 $\frac{7}{2} \times \frac{3}{4} = \frac{21}{8}$

d) $\frac{1}{2} \div \frac{7}{6}$
 $\frac{1}{2} \times \frac{6}{7} = \frac{6}{14}$
 $\frac{3}{7}$

pa/39

$$\textcircled{10} \quad \frac{7}{12} \div \frac{1}{4}$$

$$\frac{7}{12} \times \frac{4}{1} = \frac{28}{12}$$

$$= \frac{7}{3}$$

$$\textcircled{b) \quad \frac{3}{5} \div \frac{11}{10}}$$

$$\frac{3}{5} \times \frac{10}{11} = \frac{30}{55}$$

$$= \frac{6}{11}$$

$$\textcircled{c) \quad \frac{5}{2} \div \frac{1}{3}}$$

$$\frac{5}{2} \times \frac{3}{1} = \frac{15}{2}$$

$$\textcircled{d) \quad \frac{5}{6} \div \frac{9}{8}}$$

$$\frac{5}{6} \times \frac{8}{9} = \frac{40}{27}$$

$$\textcircled{11} \quad \textcircled{a) \quad \frac{5}{3} \div \frac{5}{3}}$$

$$\frac{5}{3} \times \frac{3}{5} = \frac{25}{9}$$

$$\textcircled{b) \quad \frac{4}{9} \div \frac{4}{9} = 1$$

$$\frac{4}{9} \times \frac{9}{4} = \frac{36}{36}$$

$$= 1$$

$$\textcircled{c) \quad \frac{1}{6} \div \frac{2}{5}}$$

$$\frac{1}{6} \times \frac{5}{2} = \frac{5}{12}$$

$$\textcircled{12} \quad \textcircled{a) \quad \frac{11}{12} \div \frac{1}{4}}$$

$$\frac{11}{12} \times \frac{4}{1} = \frac{44}{12}$$

$$= \frac{11}{3}$$

$$\text{or } 3\frac{2}{3}$$

$$\textcircled{b) \quad \frac{11}{12} \div \frac{1}{3}}$$

$$\frac{11}{12} \times \frac{3}{1} = \frac{33}{12}$$

$$= \frac{11}{4}$$

$$\text{or } 2\frac{3}{4}$$

$$\textcircled{c) \quad \frac{11}{12} \div \frac{1}{6}}$$

$$\frac{11}{12} \times \frac{6}{1} = \frac{66}{12}$$

$$= \frac{11}{2}$$

$$\text{or } 5\frac{1}{2}$$

$$\textcircled{d) \quad \frac{11}{12} \div \frac{1}{2}}$$

$$\frac{11}{12} \times \frac{2}{1} = \frac{22}{12}$$

$$= \frac{11}{6}$$

$$\text{or } 1\frac{5}{6}$$

$$13) \frac{3}{4} \div \frac{5}{8}$$

$$\frac{3}{4} \times \frac{8}{5} = \frac{24}{20}$$

$$= \frac{6}{5}$$

$$i) \frac{15}{8} \div \frac{3}{4}$$

$$\frac{15}{8} \times \frac{4}{3} = \frac{20}{8}$$

$$= \frac{5}{2}$$

$$ii) \frac{7}{12} \div \frac{2}{5}$$

$$\frac{7}{12} \times \frac{5}{2} = \frac{35}{24}$$

$$ii) \frac{5}{12} \div \frac{7}{2}$$

$$\frac{5}{12} \times \frac{2}{7} = \frac{24}{35}$$

$$v) \frac{5}{3} \div \frac{4}{5}$$

$$\frac{5}{3} \times \frac{5}{4} = \frac{25}{12}$$

$$v) \frac{4}{5} \div \frac{3}{5}$$

$$\frac{4}{5} \times \frac{5}{3} = \frac{12}{3}$$

$$14) \frac{2}{3} \div \frac{1}{12}$$

$$\frac{2}{3} \times \frac{12}{1} = \frac{24}{3}$$

$$= 8$$

He can clear 8 tables in $\frac{2}{3}$ hour

15 bottom of page

$$16) \frac{3}{4} \div \frac{1}{16}$$

$$\frac{3}{4} \times \frac{16}{1} = \frac{48}{4}$$

$$= 12$$

12 pairs of students can do the experiment

$$17) \frac{a}{b} \div \frac{c}{d} \quad 2, 3, 4, 5$$

many possibilities

b) Greatest Quotient

Largest Number \div Smallest

$$\frac{5}{2} \div \frac{3}{4} \quad \frac{4}{2} \div \frac{2}{5}$$

$$\frac{5}{2} \times \frac{4}{3} = \frac{20}{6}$$

$$\frac{4}{2} \times \frac{5}{2} = \frac{20}{6}$$

Smallest Quotient

Smallest \div Largest

$$\frac{2}{5} \div \frac{4}{3} \quad \frac{3}{4} \div \frac{5}{2}$$

$$\frac{2}{5} \times \frac{3}{4} = \frac{6}{20}$$

$$\frac{3}{4} \times \frac{2}{5} = \frac{6}{20}$$

$$15) \frac{27}{28} \div \frac{9}{14}$$

$$= \frac{27}{28} \times \frac{14}{9}$$

$$= \frac{3 \times 1}{2 \times 1}$$

$$= \frac{3}{2}$$

$$16) \frac{15}{22} \div \frac{3}{11}$$

$$= \frac{15}{22} \times \frac{11}{3}$$

$$= \frac{5 \times 1}{2 \times 1}$$

$$= \frac{5}{2}$$

$$d) \frac{57}{69} \div \frac{11}{15}$$

$$= \frac{3 \times 19}{3 \times 23} \times \frac{15}{11}$$

$$= \frac{3 \times 5}{23 \times 11}$$

$$= \frac{15}{253}$$

Rule for Dividing Fractions is:

Flip second fraction and Multiply

$$\frac{7}{8} \div \frac{1}{3}$$

Dividing Mixed Fractions

$$3\frac{3}{8} \div 1\frac{1}{3}$$

$$\frac{27}{8} \div \frac{4}{3}$$

$$\frac{27}{8} \times \frac{3}{4}$$

$$\frac{81}{32}$$

$$2\frac{17}{32}$$

Step 1) Change to Improper

Step 2) Flip and Multiply

Step 3) Reduce

When the division involves mixed numbers, change the mixed numbers to improper fractions first.

Try the following on your own:

$$(a) \frac{4}{5} \div \frac{7}{12}$$

$$\frac{4}{5} \times \frac{12}{7} = \frac{48}{35} = 1\frac{13}{35}$$

$$(b) 1\frac{2}{3} \div \frac{7}{8}$$

$$1\frac{5}{3} \div \frac{7}{8} = \frac{5}{3} \times \frac{8}{7} = \frac{40}{21} = 1\frac{19}{21}$$

$$(c) 6 \div \frac{2}{7}$$

$$\frac{6}{1} \times \frac{7}{2} = \frac{42}{2} = 21$$

$$(d) 2\frac{1}{6} \div \frac{5}{9}$$

$$\frac{13}{6} \div \frac{5}{9}$$

$$\frac{13}{6} \times \frac{9}{5} = \frac{117}{30} = 3\frac{9}{10}$$

$$\frac{13}{2} \times \frac{3}{5} = \frac{39}{10} = 3\frac{9}{10}$$

$$(e) \frac{11}{15} \div 3\frac{2}{3}$$

$$(f) 5\frac{2}{5} \div 2\frac{1}{8}$$

$$g) 2\frac{1}{4} \div 5$$

$$\frac{9}{4} \div \frac{5}{1}$$

$$\frac{9}{4} \times \frac{1}{5}$$

$$\frac{9}{20}$$

When the division involves mixed numbers, change the mixed numbers to improper fractions first.

Try the following on your own:

$$(a) \frac{4}{5} \div \frac{7}{12}$$

$$= \frac{4}{5} \times \frac{12}{7}$$

$$= \frac{48}{35}$$

$$= 1 \frac{13}{35}$$

$$(d) 2\frac{1}{6} \div \frac{5}{9}$$

$$= \frac{13}{6} \div \frac{5}{9}$$

$$= \frac{13}{6} \times \frac{9}{5}$$

$$= \frac{13 \times 9}{26 \times 5}$$

$$= \frac{13 \times 3}{2 \times 5}$$

$$= \frac{39}{10}$$

$$= 3 \frac{9}{10}$$

$$(b) 1\frac{2}{3} \div \frac{7}{8}$$

$$\frac{5}{3} \div \frac{7}{8}$$

$$\frac{5}{3} \times \frac{8}{7}$$

$$= \frac{40}{21} = 1 \frac{19}{21}$$

$$(c) 6 \div \frac{2}{7}$$

$$6 \times \frac{7}{2}$$

$$\frac{42}{2} = \frac{21}{1} = 21$$

$$(e) \frac{11}{15} \div 3\frac{2}{3}$$

$$(f) 5\frac{2}{5} \div 2\frac{1}{8}$$

Class / Homework

Answer Pg 507

Page 145

#6 ^{ab} (no estimations just use the rule)

#10 ^{ab}

#11 ^{ab}

#12

#13

#16 (^{ab} Just divide no estimations)

