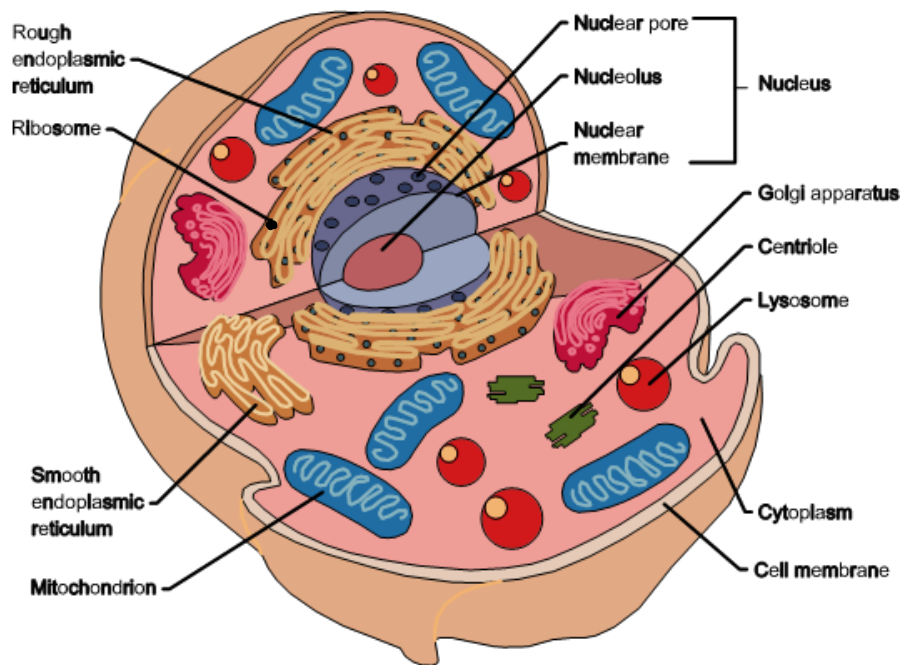
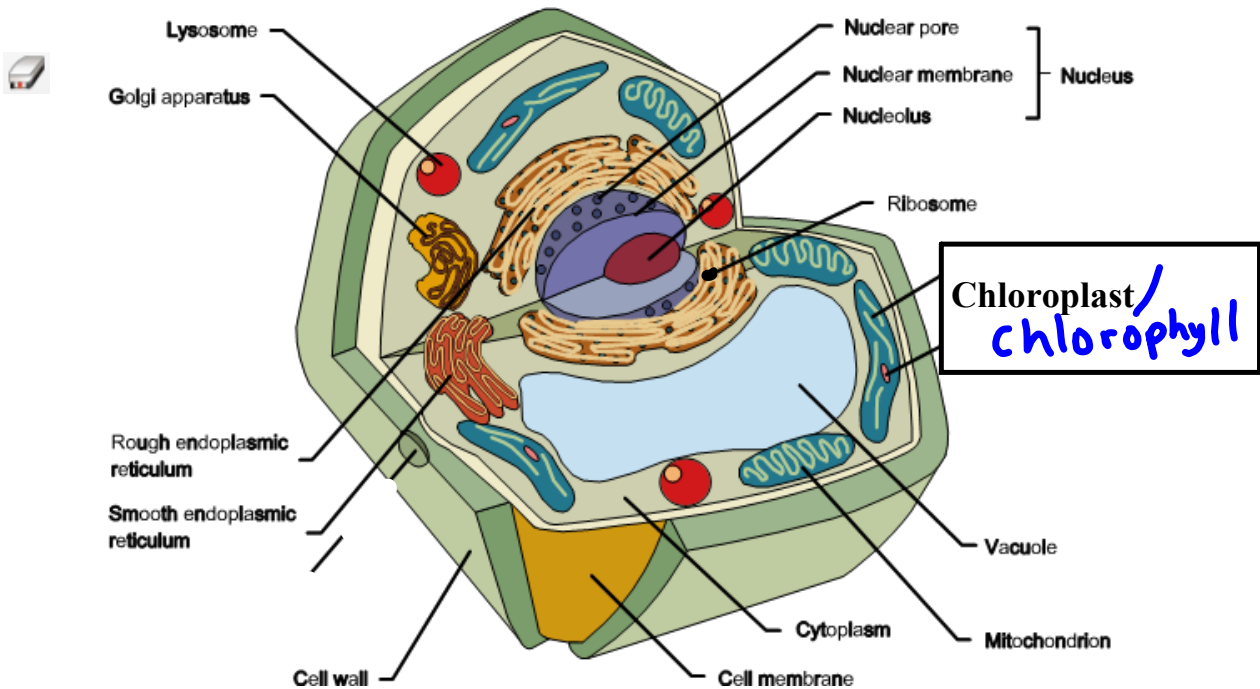




## Animal Cell



# Plant Cell



Quiz on Labeling ~~Wednesday~~ ~~Oct. 28~~ ~~Oct. 29~~  
Friday

Quiz on definition  
↳ Matching  
or  
M.C. Tuesday  
Nov. 2, 2021

*Animal and Plant Cells both have :*

Cell Membrane - acts like a gatekeeper - controls movement of materials into\out of the cell.

Nucleus - control center (brain) - controls all the cell's activity

Organelle - are the structures inside the cell

chromosomes - contains the genes (genetic info found in nucleus) **DNA**

cytoplasm - fluid that fills the cell, nutrients absorbed, transported & processed here.

ribosomes - are the <sup>make protein</sup> protein builders or the protein synthesizers of the cell.

endoplasmic reticulum - series of canals, carry material around the cell

golgi apparatus - stores proteins until they are needed

lysosomes - hold enzymes that were created by the cell, purpose of the lysosome is to digest things.

mitochondrion - provide the cell with energy (powerhouse)

vacuole - fluid filled bubble, water, sugar, minerals & proteins  
(Much larger in plant cells)