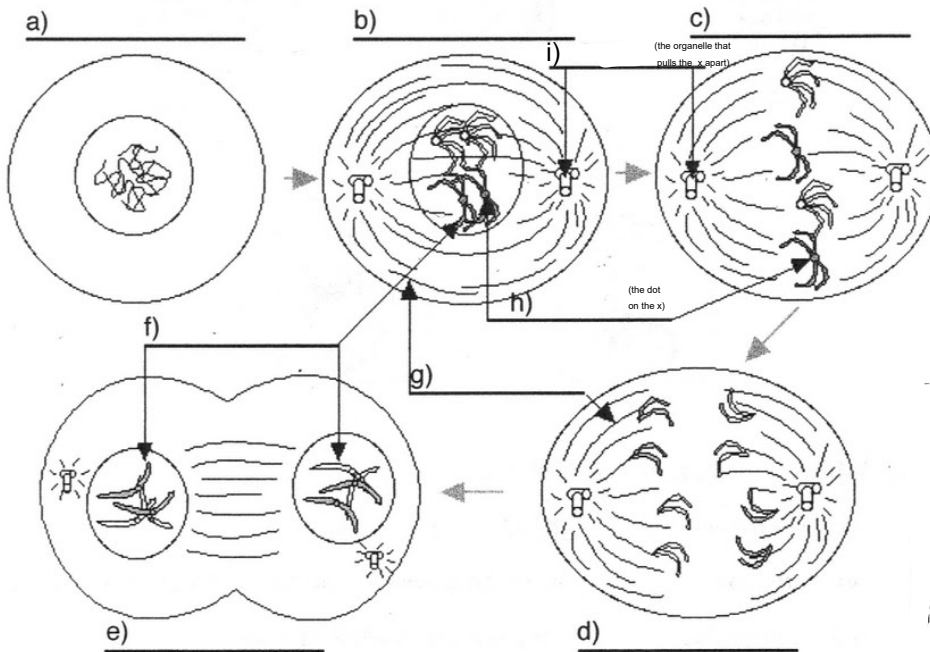


Mitosis Worksheet

Name: _____

Date: _____

1. Label the following diagram with the phase of mitosis, (a) through (e), or the type of cell structure, (f) through (j), seen during mitosis.



2. During which stage of a cell's cycle do the replicated chromosomes thicken and become shorter? _____
3. During which stage of a cell's cycle do the replicated chromosomes line up in the middle of the cell? _____
4. During which stage of a cell's cycle do the chromosomes duplicate? _____
5. After what stage does cytokinesis begin? _____
6. How many new cells are always made from 1 daughter cell? _____
- 7) How are the daughter cell related to the mother cell? _____
- 8) A skin cell of a penguin has 38 chromosome. If this cell goes through mitosis then how many chromosome will each daughter cell have? _____