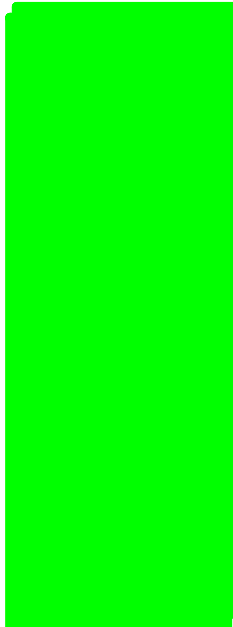


Starting with the sun, can you list
the planets? **Sun**

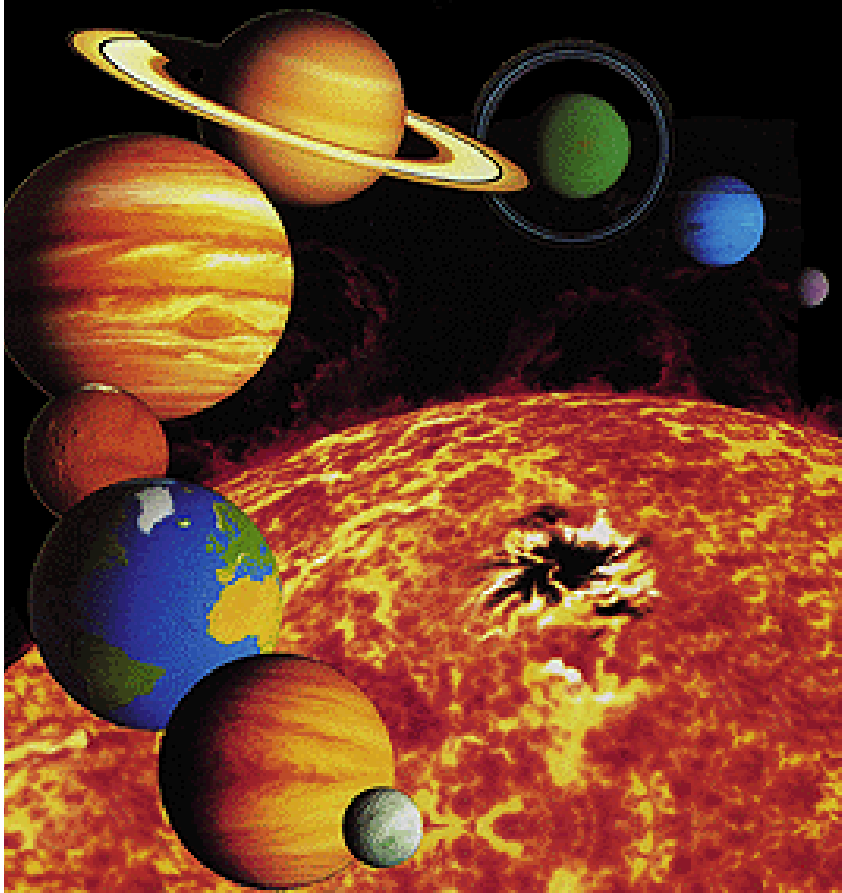
My
Very
Excited
Mother
Just
Served
Us
Nachos



Mercury
Venus
Earth
Mars
Jupiter
Saturn
Uranus
Neptune

.

Our solar system consists of the sun and everything that travels around it.



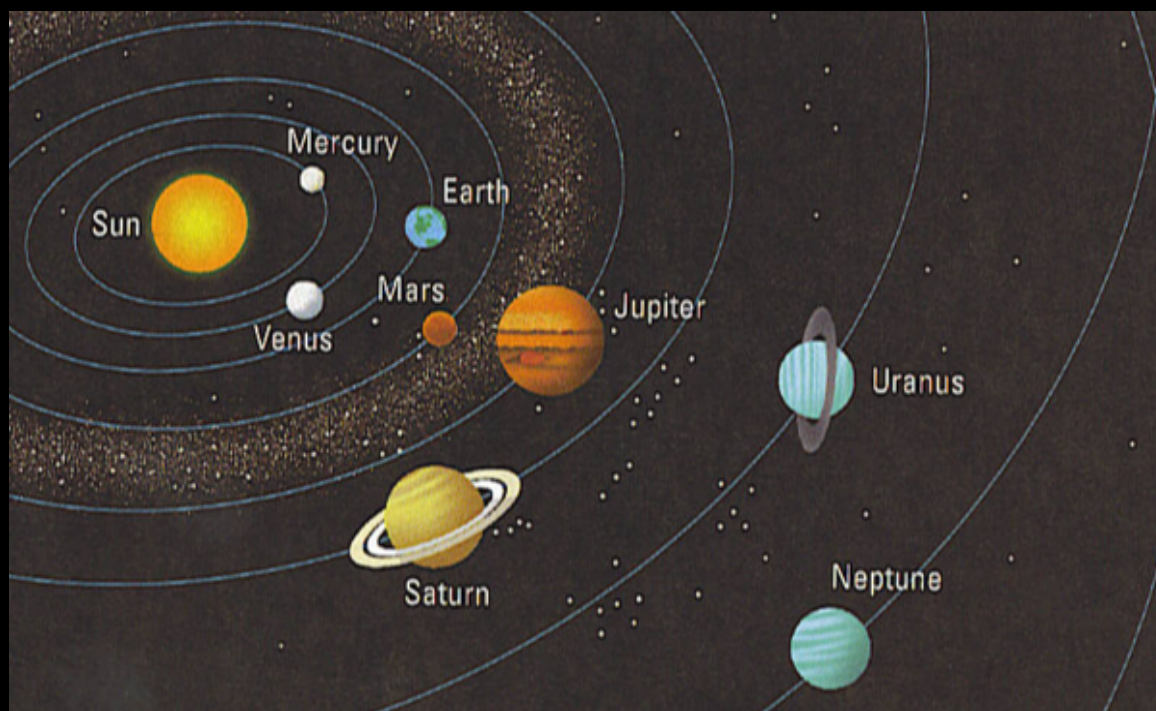
Planets and moons do not emit their own light. They are nonluminous. We can see them because light from the sun reflects off them.

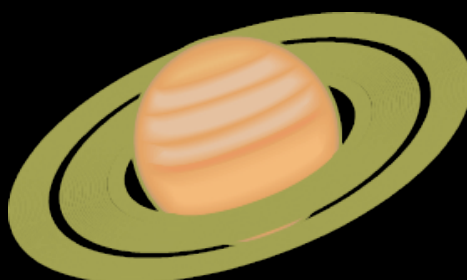
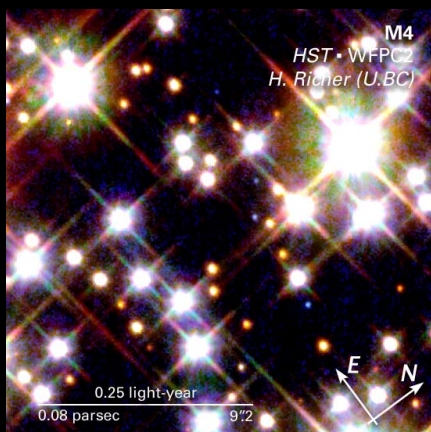
FUN NOTE:
Everything in the solar system is much closer to earth than the stars.

How come we can't see all the planets

The sun is very bright, so objects close to it get hidden in the daytime glare.

So when Mercury comes close to the sun it becomes difficult to see from Earth.





A star is matter that emits huge amounts of energy. (makes its own light)

A planet is matter that revolves around a star.

Attachments

student response no tilt.avi

seasons.avi

Uranus student response(4).avi