

Warm-Up

Solve for y if $x = -2$

A. $y = 3x - 4$

$$y = 3(-2) - 4$$

$$y = -6 - 4$$

$$y = -10$$

When $x = -2$, $y = -10$

$$(-2, -10)$$

BEDMAS

B. $y = 2 - 2x$

$$y = 2 - 2(-2)$$

$$y = 2 - -4$$

$$y = 6$$

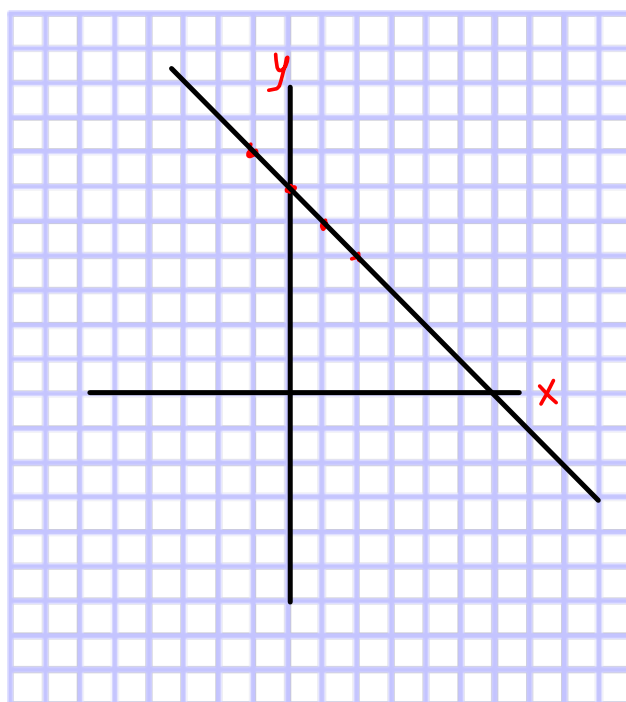
When $x = -2$, $y = 6$

$$(-2, 6)$$

x	y
-1	7
0	6
1	5
2	4

$\left. \begin{array}{l} 7 \\ 6 \\ 5 \\ 4 \end{array} \right\} -1$

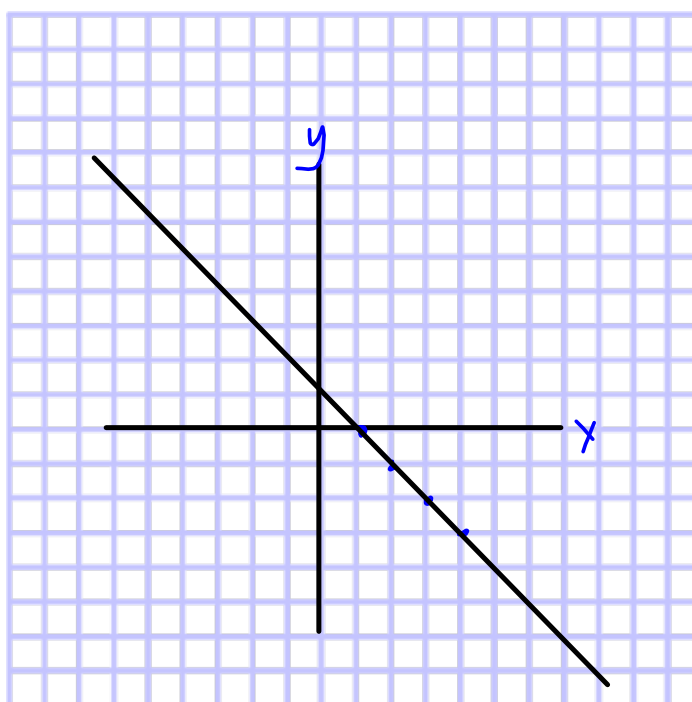
$y = -1x + 6$



1) Write the equation for the line

2. Graph

x	y
1	0
2	-1
3	-2
4	-3



Complete the table for $y=2x - 1$

Show 3 calculations

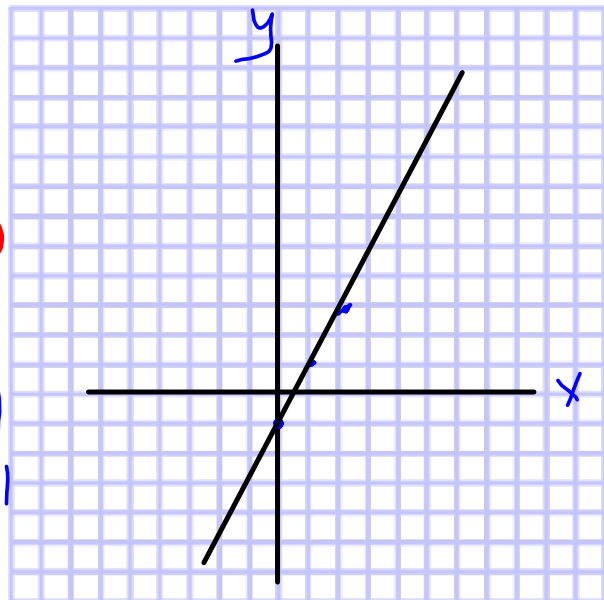
x	y
0	-1
1	1
2	3

BEOMAS

$$\begin{aligned}
 x &= 0 \\
 y &= 2x - 1 \\
 y &= 2(0) - 1 \\
 y &= 0 - 1 \\
 y &= -1
 \end{aligned}$$

$$\begin{aligned}
 x &= 1 \\
 y &= 2x - 1 \\
 y &= 2(1) - 1 \\
 y &= 2 - 1 \\
 y &= 1
 \end{aligned}$$

$$\begin{aligned}
 x &= 2 \\
 y &= 2x - 1 \\
 y &= 2(2) - 1 \\
 y &= 4 - 1 \\
 y &= 3
 \end{aligned}$$



Create a table of values for the equation: $y = 3x + 8$
 [show 3 calculations]

X	y
-2	2
-1	5
0	8
1	11
2	14

$$x=0$$

$$y=3x+8$$

$$y=3(0)+8$$

$$y=0+8$$

$$y=8$$

$$x=1$$

$$y=3x+8$$

$$y=3(1)+8$$

$$y=3+8$$

$$y=11$$

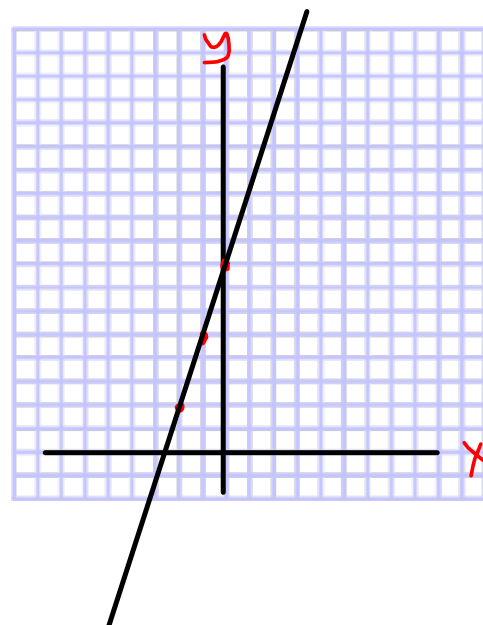
$$x=2$$

$$y=3x+8$$

$$y=3(2)+8$$

$$y=6+8$$

$$y=14$$



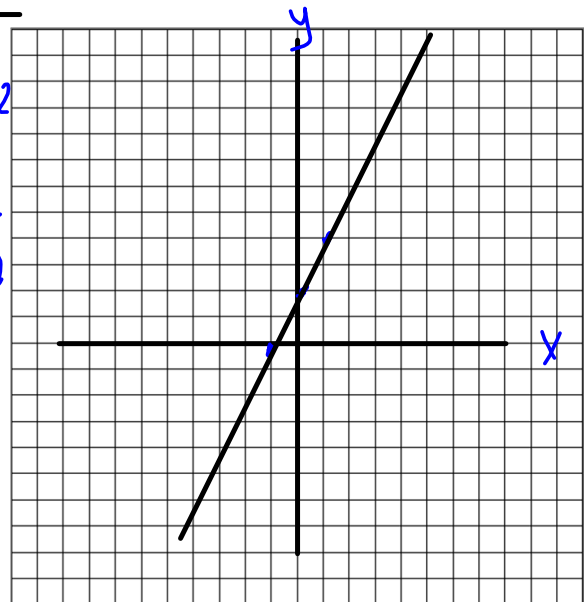
1. Write the equation for the following:

$$y = 2x + 2$$

x	y
-2	-2
-1	0
0	2
1	4

2. Is it linear?

3. Graph



4. Describe the graph.

As x increases by 1, y increase by 2

Given the equation $y = -2x + 1$

Make a table of values and graph.

[show 3 calculations]

x	y
0	1
1	-1
2	-3

$\rightarrow -2$

$\rightarrow -2$

$x = 0$

$x = 1$

$x = 2$

$y = -2x + 1$

$y = -2x + 1$

$y = -2x + 1$

$y = -2(0) + 1$

$y = -2(1) + 1$

$y = -2(2) + 1$

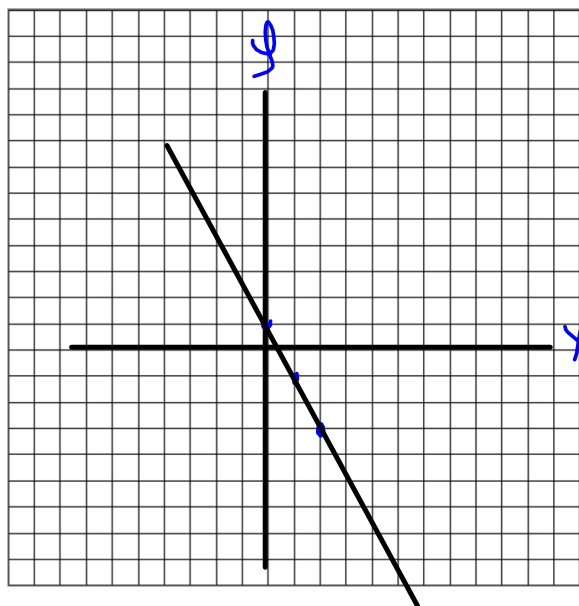
$y = 1$

$y = -2 + 1$

$y = -4 + 1$

$y = -1$

$y = -3$



DO ALL WORK ON GRAPH PAPER

Page 170

#5 Copy the table and describe **IF** linear

#7 [a,c] Copy the table...show **at least three calculations** then complete the table of values.

#9 [a, c] Copy the table and complete **DO NOT GRAPH**

#10 a,c,e...table of values then graph
Show 3 calculations

Pg 488/489

