

Solutions To Review of Fractions Gr. 7

Reviewing fractions, decimals and percents. You will need a calculator for your work at times.

Mental Math (MEAN not to use calculators)

$$\bullet 1) (+2) - (-8) = +10$$

$$(+2) + (+8) =$$

$$\bullet 2) 7n, n = 12$$

$$3) \frac{2}{1} - \frac{1}{5}$$

$$\frac{10}{5} - \frac{1}{5} = \frac{9}{5}$$

$$4) \frac{1}{2} + \frac{2}{6} =$$

$$\frac{1}{2} + \frac{2}{6} = \frac{2}{3}$$

$$5) \frac{25}{n}, n = 5$$

$$\frac{25}{5}$$

$$= 5$$

$$\bullet 6) 0.10 \times 0.4 = 0.040$$

4 × 10 = 40
But 3 dec places

$$\bullet 7) 13.2 \times 2 = 26.4$$

$$\bullet 8) 0.40 \div 0.04 = 10$$

40 ÷ 4

$$9) \frac{19}{8} = 2\frac{3}{8}$$

mixed number

$$\bullet 10) 99 - 1 = 98$$

#8)

Solutions to Review of Fraction Gr 7 Sheet.notebook

Same as

• 1) $(+2) - (-8) = +10$
last #1

Same as

• 2) $7n, n = 12$
last #2

3) $\frac{2}{1} - \frac{1}{3}$
 $\frac{6}{3} - \frac{1}{3} = \frac{5}{3} = 1\frac{2}{3}$

4) $\frac{1}{3} + \frac{2}{6} =$
 $\frac{2}{6} + \frac{2}{6} = \frac{4}{6} = \frac{2}{3}$ *reduce*

5) $\frac{20}{n}, n = 5$
 $= \frac{20}{5}$
 $= 4$

$11 \times 4 = 44$

but has 3 decimal place so answer needs to have 3 numbers after decimal

• 6) $0.11 \times 0.4 = 0.044$

• 7) $18.2 \times 2 = 36.4$

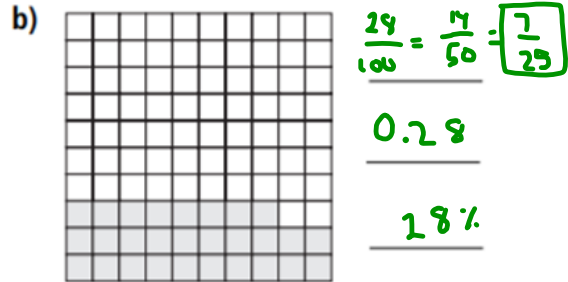
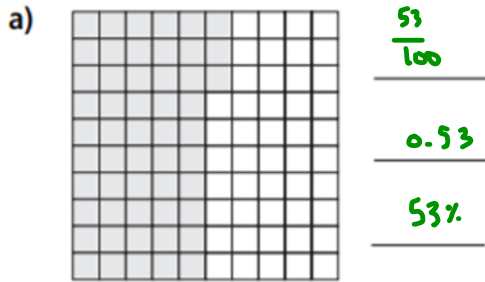
• 8) $0.44 \div 0.04 = 11$
 $44 \div 4$

• 9) $\frac{15}{8} = 1\frac{7}{8}$
mixed number

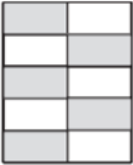
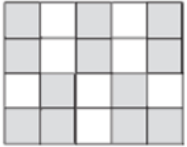
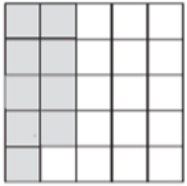
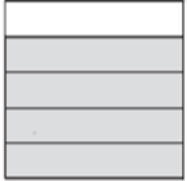

• 10) $90 - 1 = 89$

Solutions to Review of Fraction Gr 7 Sheet.notebook

1. Use a fraction, decimal, and percent to describe the shaded part of each grid.



2. Complete the chart.

Shape	Shaded region as a fraction	Shaded region as a decimal	Shaded region as a percent
	$\frac{5}{10} = \boxed{\frac{1}{2}}$	0.5	50%
	$\frac{12}{20} = \frac{6}{10} = \boxed{\frac{3}{5}}$ $\downarrow \times 4$ $\frac{24}{100}$	0.24	24%
	$\boxed{\frac{9}{25}} \times 4 = \frac{36}{100}$	0.36	36%
	$\boxed{\frac{4}{5}} \times 2 = \frac{8}{10}$	0.8	80%
	$\frac{2}{8} \div 2 = \frac{1}{4} = \boxed{\frac{1}{4}}$ $\times 25 = \frac{25}{100}$	0.25	25%

Solutions to Review of Fraction Gr 7 Sheet.notebook

3. Write each fraction as a decimal, and then as a percent.
Use a calculator if necessary.

a) $\frac{3}{10} = \underline{0.3} = \underline{30\%}$

b) $\frac{9}{10} = \underline{0.9} = \underline{90\%}$

c) $\frac{8}{50} \overset{\times \frac{2}{2}}{=} \frac{16}{100} = \underline{0.16} = \underline{16\%}$

d) $\frac{9}{20} \overset{\times \frac{5}{5}}{=} \frac{45}{100} = \underline{0.45} = \underline{45\%}$

e) $\frac{2}{5} \overset{\times \frac{2}{2}}{=} \frac{4}{10} = \underline{0.40} = \underline{40\%}$

f) $\frac{12}{40} = \underline{0.3} = \underline{30\%}$

g) $\frac{1}{5} = \underline{0.2} = \underline{20\%}$
 $\frac{2}{10}$

h) $\frac{6}{30} \overset{\div 3}{=} \frac{2}{10} = \underline{0.2} = \underline{20\%}$
 $\frac{2}{10}$

i) $\frac{3}{25} \overset{\times \frac{4}{4}}{=} \frac{12}{100} = \underline{0.12} = \underline{12\%}$
 $\frac{12}{100}$

Solutions to Review of Fraction Gr 7 Sheet.notebook

4. Bennett had 19 out of 20 on a spelling test.

Write Bennett's mark as a percent.

$$\frac{19 \times 5}{20 \times 5} = \frac{95}{100} \quad 95\%$$

5. In Ms. Khan's class, 22 out of 25 students hand in their projects on time.

What percent of the students hand in their projects on time?

$$\frac{22 \times 4}{25 \times 4} = \frac{88}{100} = 88\%$$

6. Use 4 different colours to shade the squares on the hundredths grid below, as given in the table.

Describe each coloured part as a fraction, a decimal, and a percent.

Colour	Fraction	Decimal	Percent
Red	$\frac{6}{25} = \frac{24}{100}$	0.24	24%
Yellow	$\frac{35}{100} = \frac{7}{20}$	0.35	35%
Green	$\frac{2}{10} = \frac{1}{5}$	0.20	20%
Purple	$\frac{18}{100} = \frac{9}{50}$	0.18	18%
White			

7. Lucy and Victor are sharing pens.

Lucy has $\frac{1}{4}$ of the pens, and Victor has 20% of the pens.

Who has more pens? Explain.

$$\text{Lucy} \quad \frac{1}{4} = \frac{25}{100} = 25\%$$

$$\text{Victor} = 20\%$$

So Lucy has more