

PREFIXES...

anthro - human; *bio* - life;

eco - ecology (the science of organisms and their relationships with the environment)

Viewpoints

1) **anthropocentric: human-centered**

Humans are the center of the universe and nature exists for human benefit.

2) **biocentric: life-centered**

Life is the center of the universe and humans are a separate yet equal part of nature

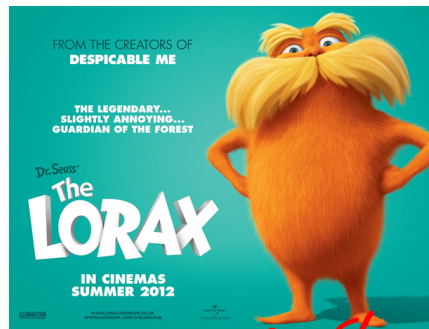
3) **ecocentric: ecosystem-centered**

Living and non-living parts of a particular area are equally important.

DR. Seuss...The Lorax




VS



While watching the video... *at least 8*

- 1) make a list of environmental issues presented in the video.
- 2) decide what point of view best suits the Lorax? the Onceler?



What do you think
are some of the
environmental concerns
in todays society?

ACTIVITY...

- 1) On looseleaf, list any current environmental issues you are aware of.
- 2) Classify the issue as either: LOCAL / REGIONAL / GLOBAL
- 3) With a partner, circle any issues that are common

Local [New Brunswick]	Regional [Canada]	Global [World]
<ul style="list-style-type: none"> - population of salmon - population of deer - garbage 	<ul style="list-style-type: none"> - paper straws 	