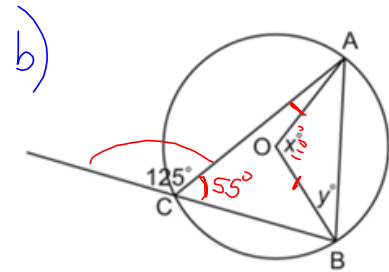
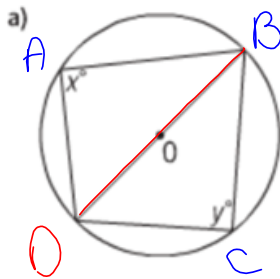


Warm-Up

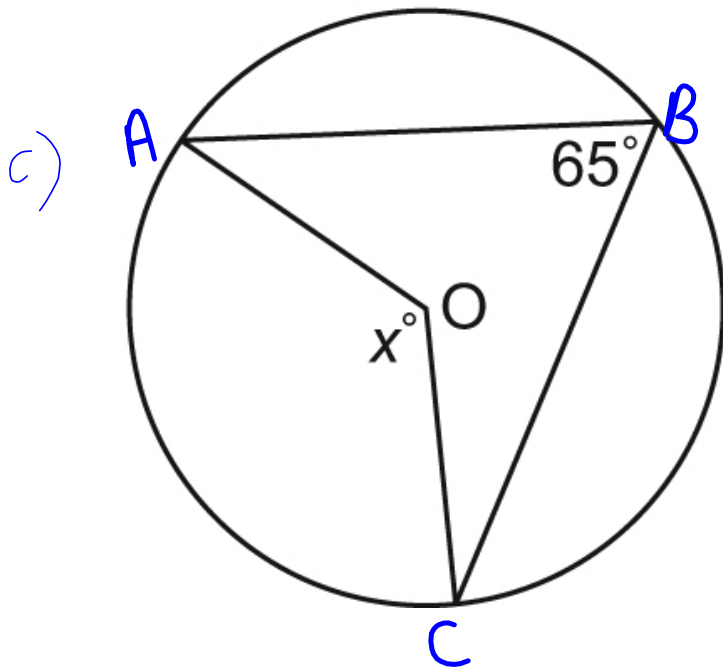


Know	Need
------	------

$\angle DOB = 180^\circ$ central angle	$\angle DCB = 90^\circ$ $\angle BAD = 90^\circ$ inscribed
---	---

Know	Need
------	------

$\angle ACB = 55^\circ$	$\angle AOB = 110^\circ$ central angle $\angle ABD = 35^\circ$
-------------------------	--

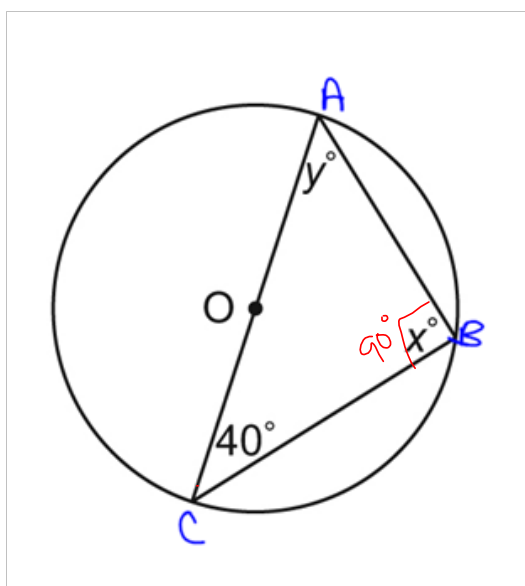


Know	Need
$\angle ABC = 65^\circ$	$\angle AOC = 130^\circ$

\nearrow Inscribed

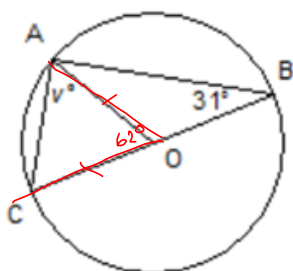
\nwarrow Central

d)



Know	Need
$\angle ACB = 40^\circ$	$\angle CBA = 90^\circ$
	$\angle CAB = 50^\circ$

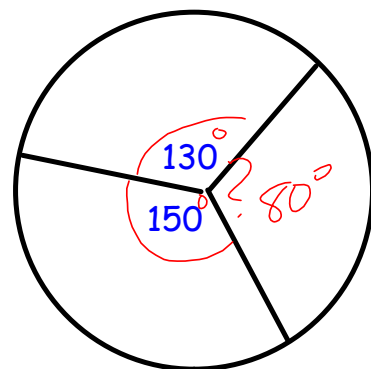
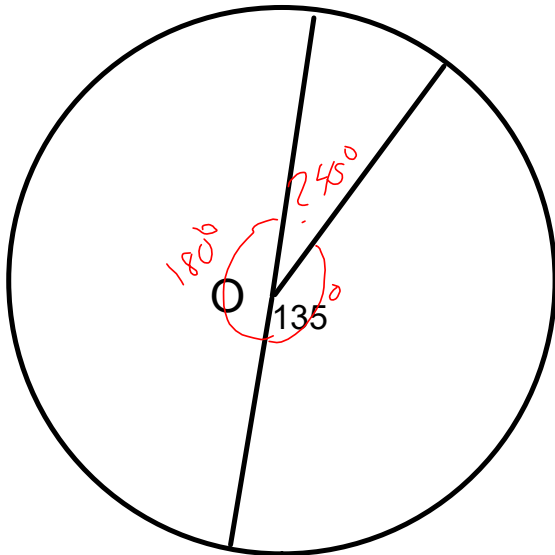
e)



KNOW	Need
$\angle ABC = 31^\circ$	$\angle CAO = 59^\circ$
$\angle COA = 62^\circ$	

$$62 + _ + _ = 180^\circ$$


The sum of central angles in a circle is 360°

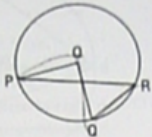


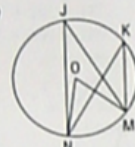
Practice

Check

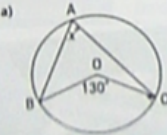
3. In each circle, identify an inscribed angle and the central angle subtended by the same arc.

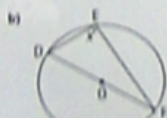
a) 

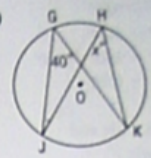
b) 

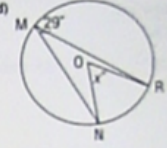
c) 

4. Point O is the centre of each circle. Determine each value of x° .

a) 

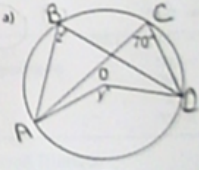
b) 

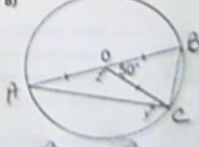
c) 

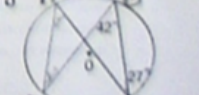
d) 

Apply

5. Point O is the centre of each circle. Label each vertex. Determine each value of x° and z° . Which circle properties did you use?

a) 

b) 

c) 

Page
410-411

3-5

Page 534
Answers