

## Warm-Up

March 18, 2019

Solve for y if  $x = -2$ 

$$x = -2$$

A.  $y = 3x - 4$

$$y = 3(-2) - 4$$

$$y = -6 - 4$$

$$y = -10$$

coordinate  $(-2, -10)$ 

$$x = -2$$

$$y = -2x + 2 \quad \text{B. } y = 2 - 2x$$

$$y = 2 - 2(-2)$$

$$y = 2 - -4$$

$$y = 6$$

 $(-2, 6)$

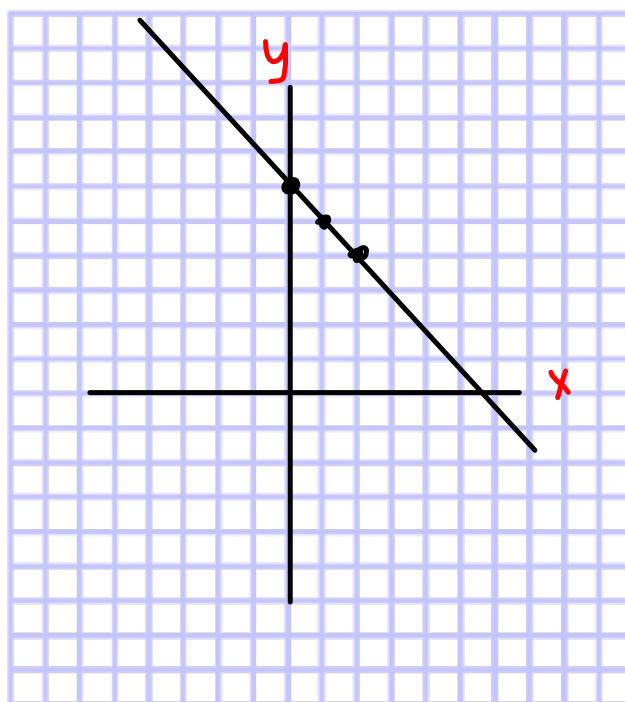
x	y
-1	7
0	6
1	5
2	4

$\downarrow -1$   
 $\downarrow -1$   
 $\downarrow -1$

1. Write the equation for the line

$$y = -1x + 6$$

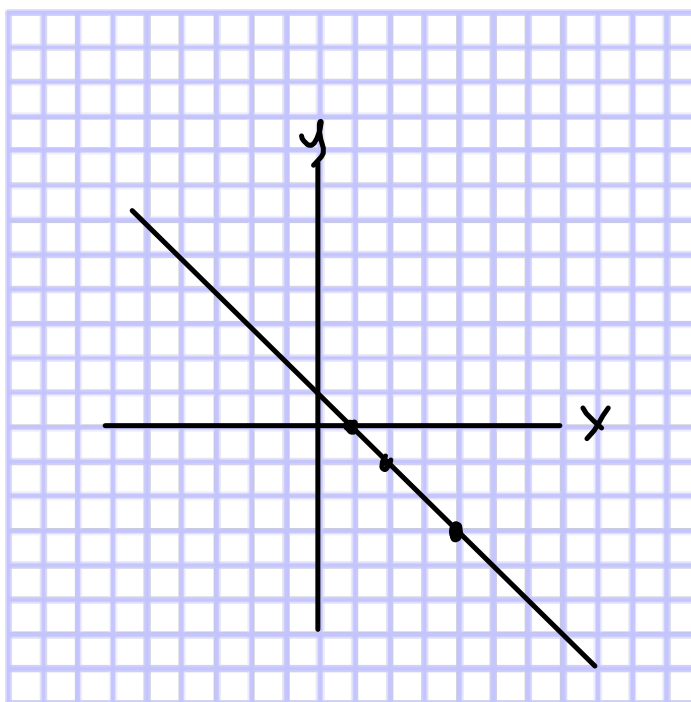
2. Graph



x	y
1	0
2	-1
3	-2
4	-3

$\succ -1$   
 $\succ -1$   
 $\succ -1$

Equation  
 $y = -x + 1$



# Complete the table for $y=2x - 1$

Show 3 calculations

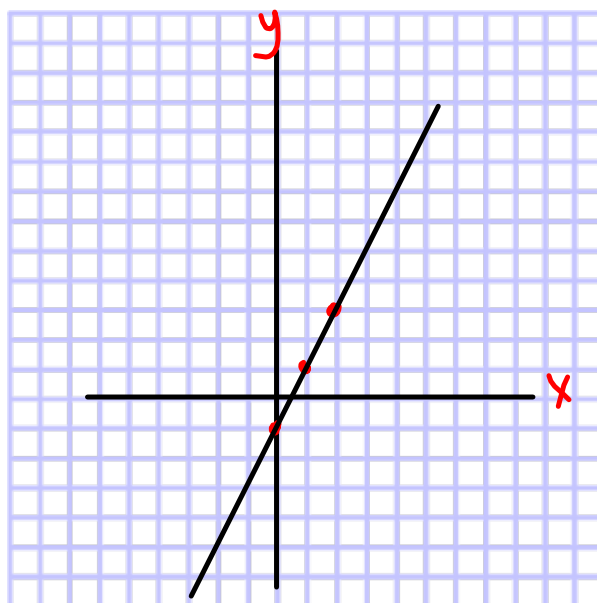
x	y
0	-1
1	1
2	3

$$y=2x-1$$

$$\begin{aligned} x &= 0 \\ y &= 2x - 1 \\ y &= 2(0) - 1 \\ y &= -1 \end{aligned}$$

$$\begin{aligned} x &= 1 \\ y &= 2x - 1 \\ y &= 2(1) - 1 \\ y &= 2 - 1 \\ y &= 1 \end{aligned}$$

$$\begin{aligned} x &= 2 \\ y &= 2x - 1 \\ y &= 2(2) - 1 \\ y &= 4 - 1 \\ y &= 3 \end{aligned}$$



Create a table of values for the equation:  $y = 3x + 8$   
 [show 3 calculations]

X	y
-2	2
-1	5
0	8
1	11
2	14

$$x = 0$$

$$y = 3x + 8$$

$$y = 3(0) + 8$$

$$y = 8$$

$$x = 1$$

$$y = 3x + 8$$

$$y = 3(1) + 8$$

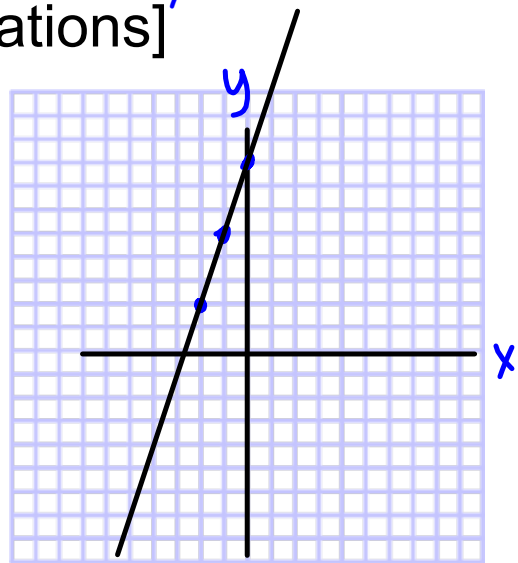
$$y = 11$$

$$x = 2$$

$$y = 3x + 8$$

$$y = 3(2) + 8$$

$$y = 14$$



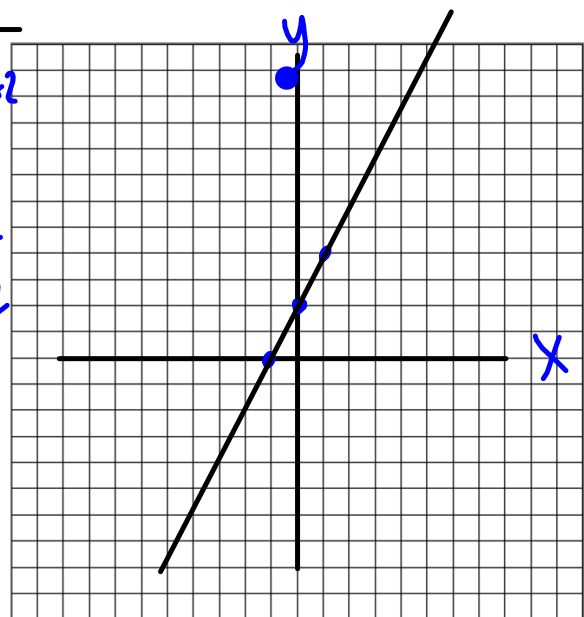
1. Write the equation for the following:

$$y = 2x + 2$$

2. Is it linear?

3. Graph

x	y
-2	-2
-1	0
0	2
1	4



4. Describe the graph.

As x increases by 1, y increases by 2.

Given the equation  $y = -2x + 1$

Make a table of values and graph.

**[show 3 calculations]**

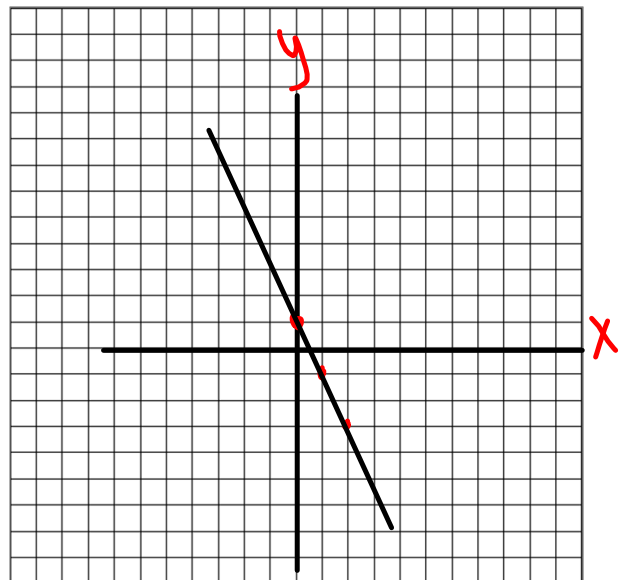
x	y
0	1
1	-1
2	-3

$$y = -2x + 1$$

$$\begin{aligned} x &= 0 \\ y &= -2x + 1 \\ y &= -2(0) + 1 \\ y &= 1 \end{aligned}$$

$$\begin{aligned} x &= 1 \\ y &= -2x + 1 \\ y &= -2(1) + 1 \\ y &= -2 + 1 \\ y &= -1 \end{aligned}$$

$$\begin{aligned} x &= 2 \\ y &= -2x + 1 \\ y &= -2(2) + 1 \\ y &= -4 + 1 \\ y &= -3 \end{aligned}$$



This is  
Linear

x	y
1	
2	
3	7
4	10
5	



**DO ALL WORK ON GRAPH PAPER**

Page 170

#5 Copy the table and describe **IF** linear

#7 [a,c] Copy the table...show **at least three calculations** then complete the table of values.

**DO NOT GRAPH**

#9 [a, c] Copy the table and complete

#10 a,c,e...table of values then graph

Show 3 calculations

**Pg 488/489**

