



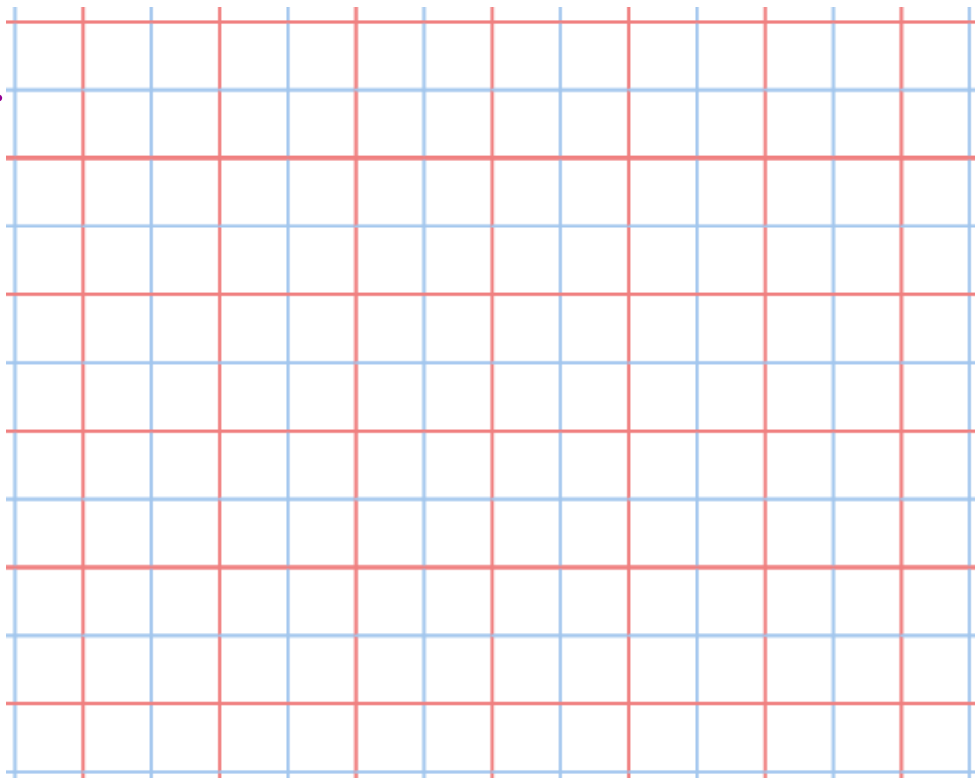
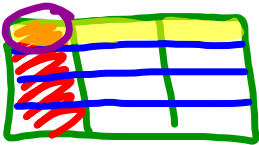
Warm Up Grade 8

Feb. 1, 2019

Use grid paper and model

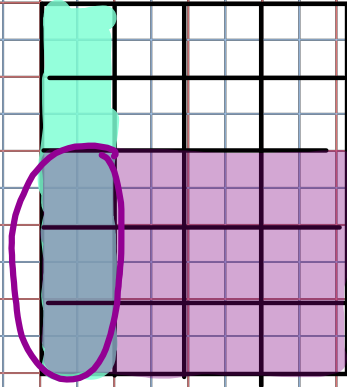
- 1) One-third of the grade 8 students tried out for a talent show. One-quarter of these students were successful. What fraction of the grade 8 students are performing at the show?

$$\frac{1}{3} \text{ of } \frac{1}{4} = \frac{1}{12}$$

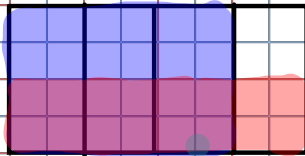


Homework Solutions

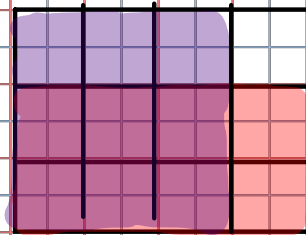
★ pg 113
 $5\frac{2}{3} \times \frac{1}{4}$
 $= \frac{23}{20}$



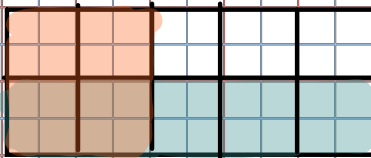
★ 6
 $2\frac{1}{3} \times \frac{3}{4}$
 $= \frac{13}{8}$



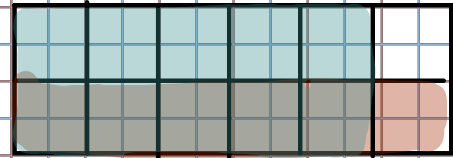
★ 5)
 $\frac{3}{4} \times \frac{2}{3}$
 $= \frac{6}{12}$



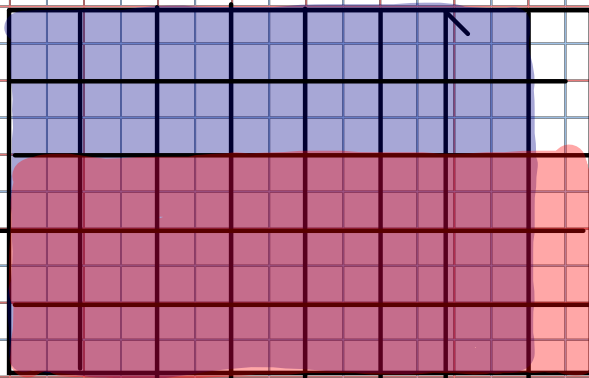
★ 3)
 $1\frac{1}{2} \times \frac{1}{3}$
 $= \frac{5}{6}$



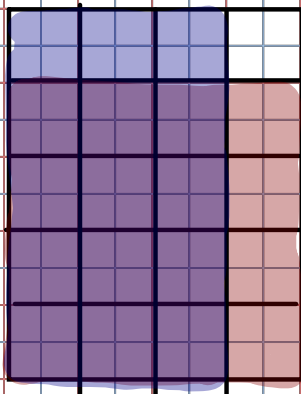
★ 1)
 $\frac{5}{6} \times \frac{1}{2}$
 $= \frac{5}{12}$



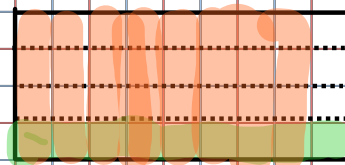
★ 2)
 $5\frac{1}{3} \times \frac{1}{8}$
 $= \frac{17}{24}$



★ 4)
 $\frac{4}{5} \times \frac{3}{4}$
 $= \frac{12}{20}$
 $= \frac{3}{5}$

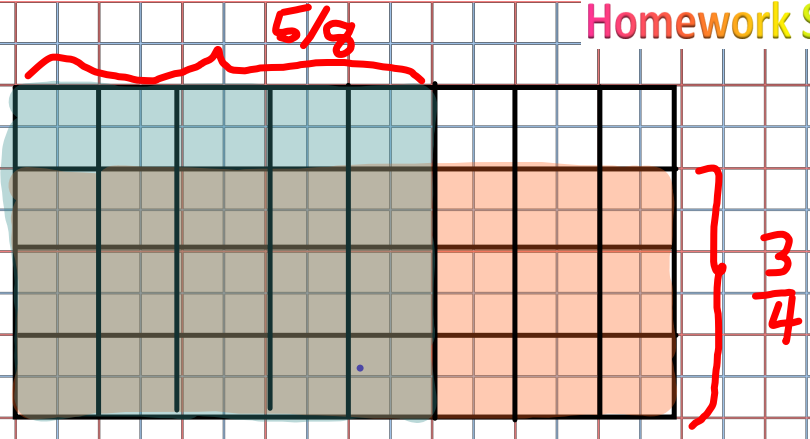


★ 2)
 $\frac{1}{4} \times \frac{2}{5} = \frac{2}{20} = \frac{1}{10}$

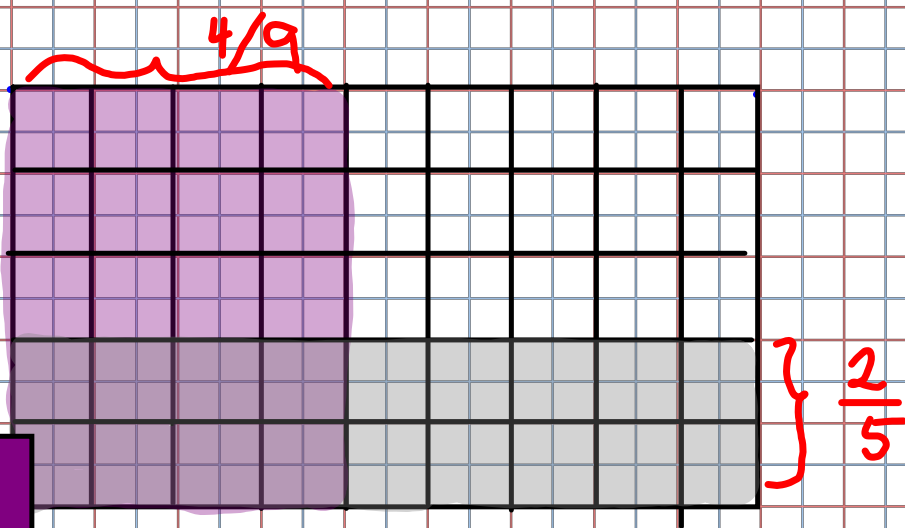


Homework Solutions

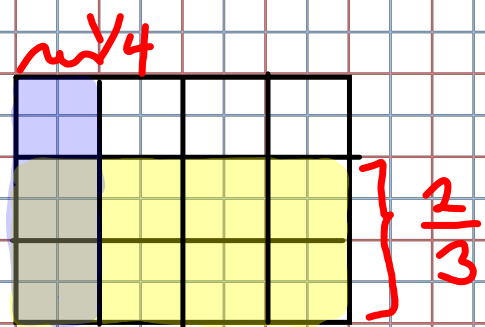
★ 8a) $\frac{3}{4} \times \frac{5}{8}$
 $= \frac{15}{32}$



b) $\frac{4}{9} \times \frac{2}{3}$
 $= \frac{8}{45}$

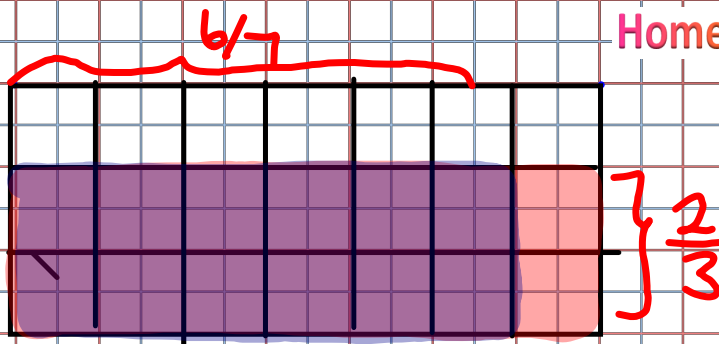


★ c) $\frac{1}{4} \times \frac{2}{3}$
 $= \frac{2}{12}$
 $= \frac{1}{6}$

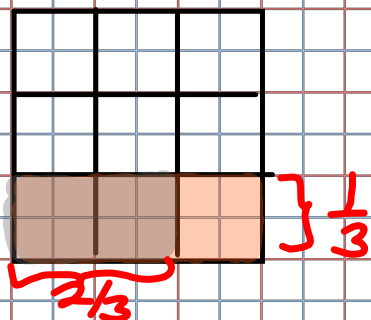


Homework Solutions

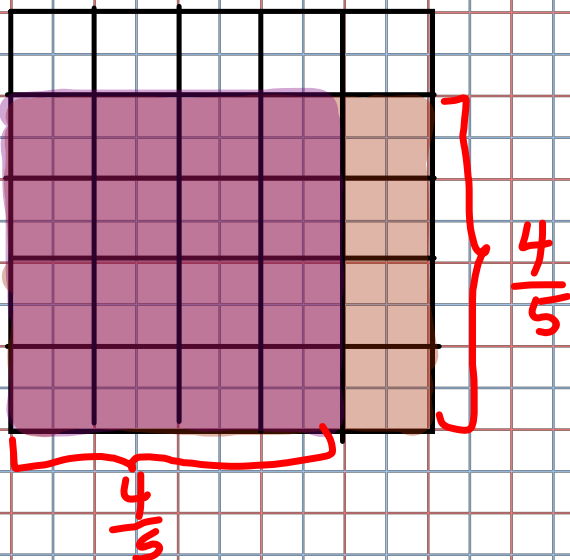
d) $\frac{6}{7} \times \frac{2}{3}$
 $= \frac{12}{21}$
 $= \frac{4}{7}$

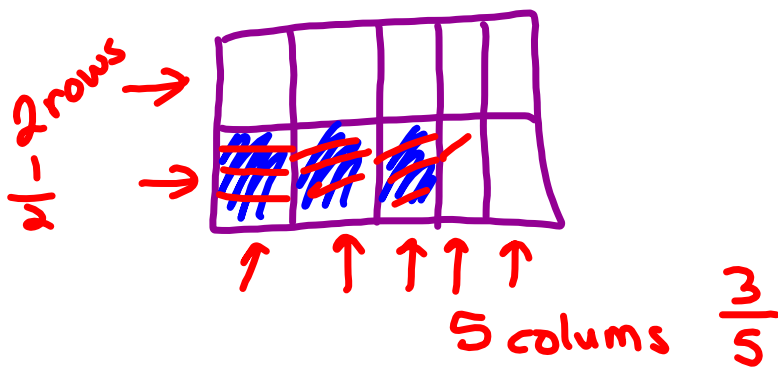


e) $\frac{2}{3} \times \frac{1}{3}$
 $= \frac{2}{9}$



f) $\frac{4}{5} \times \frac{4}{5}$
 $= \frac{16}{25}$





Multiplying Fractions

When you are multiplying fractions, you simply multiply the numerators and multiply the denominators. **(Always Reduce)**
Either before or after

Ex. $\frac{2}{9} \times \frac{7}{11} = \frac{2 \times 7}{9 \times 11} = \frac{14}{99}$

b) $\frac{8}{15} \times \frac{3}{4} = \frac{24 \div 2}{60 \div 2} = \frac{12 \div 2}{30 \div 2} = \frac{6 \div 3}{15 \div 3} = \frac{2}{5}$
reduce as you go or at end

Reduce as you go

c) $\frac{5}{12} \times \frac{6}{7} =$
 $= \frac{5}{2} \times \frac{1}{7}$
 $= \frac{5}{14}$

Reduce at end

$\frac{5}{12} \times \frac{6}{7} =$
 $= \frac{30}{84} \div 2$
 $= \frac{15}{42} \div 3$
 $= \frac{5}{14}$

Reduce @ end

d) $\frac{2}{3} \times \frac{15}{21} = \frac{30 \div 3}{63 \div 3} = \frac{10}{21}$

Reduce as I go

$\frac{2}{\cancel{3 \div 3}} \times \frac{\cancel{15 \div 3}}{21}$
 $= \frac{2 \times 5}{1 \times 21}$
 $= \frac{10}{21}$

$$\frac{\cancel{2}^{\cancel{4}}}{\cancel{5}^{\cancel{3}}} \times \frac{\cancel{3}^{\cancel{1}}}{\cancel{4}^{\cancel{4}}}$$

Reduce as I go

$$\frac{2 \times 1}{5 \times 1} = \frac{2}{5}$$

Multiplying Mixed Fractions

-ALWAYS Change to IMPROPER first

When you multiply mixed numbers, change them to improper fractions first, then multiply the numerators and multiply the denominators.

a) $1 \frac{4}{7} \times 2 \frac{1}{6}$ *Mixed \rightarrow Improper*

$$= \frac{11}{7} \times \frac{13}{6}$$

$$= \frac{143}{42}$$

$$= 3 \frac{17}{42}$$

can stop

$$\frac{666}{40} \div 2$$

$$\frac{333}{20}$$

OR

b) $3 \frac{3}{5} \times 4 \frac{5}{8}$

$$9 \frac{18}{5} \times \frac{37}{8}$$

$$= \frac{9 \times 37}{5 \times 8}$$

$$= \frac{333}{20}$$

$$= 16 \frac{13}{20}$$

Class/Homework

114
Page 118 ~~13~~ # 13 (Model and answer)

abc abc
Page 118 #6, #7, #8, #9, #11, #12a

(Don't estimate or model just multiply and reduce)

USE THE RULE AND REDUCE

