

Warm Up

December 18, 2019

$$(2x - 3) - 6(x^2 + 2y - 3)$$

$$2x - 3 - 6x^2 - 12y + 18$$

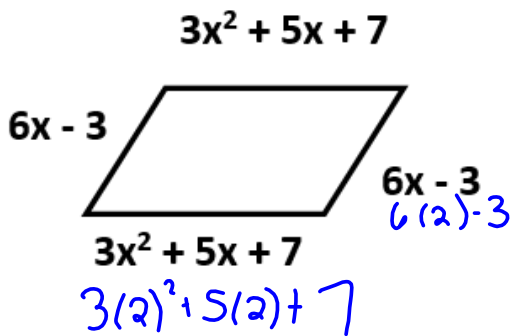
$$-6x^2 + 2x - 12y - 3 + 18$$

$$-6x^2 + 2x - 12y + 15$$

Group  
like  
terms

$$2x^2 \quad 2xy$$

A. Write the simplified expression for the perimeter of the following.

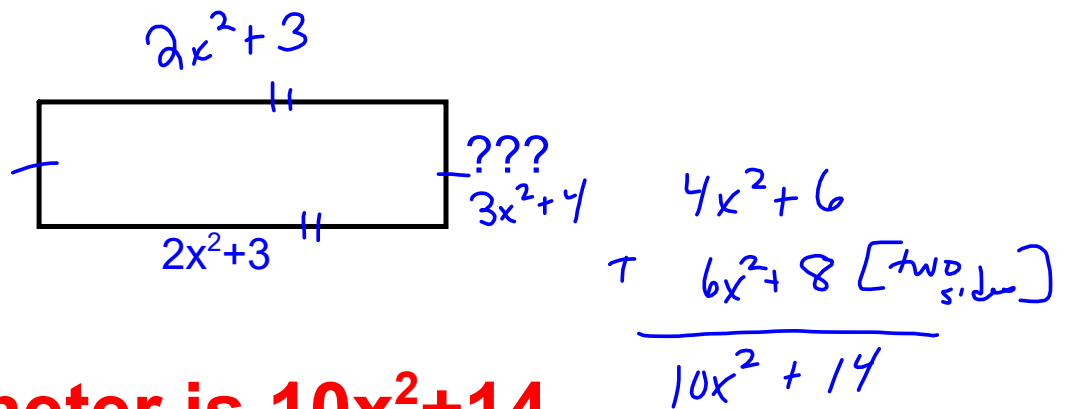


$P = 3x^2 + 3x^2 + 5x + 5x + 6x + 6x + 7 + 7 + 3 - 3$   
 $= 6x^2 + 22x + 8$

B. What is the perimeter if  $x = 2$

$6x^2 + 22x + 8$   
 BEDMAS  $\rightarrow 6(2)^2 + 22(2) + 8$   
 $6(4) + 44 + 8$   
 $24 + 44 + 8$   
 $76$

Find the missing value



**Perimeter is  $10x^2 + 14$**

$$= 10x^2 + 14$$

# Quiz Tomorrow.

Practice Questions MidUnit Review

