

Animal and Plant Cells both have :

Cell Membrane - acts like a gatekeeper - controls movement of materials into\out of the cell.

Nucleus - control center (brain) - controls all the cell's activity

Organelle - are the structures inside the cell

chromosomes - contains the genes (genetic info)

cytoplasm - fluid that fills the cell, nutrients absorbed, transported & processed here.

ribosomes - are the protein builders or the protein synthesizers of the cell.

endoplasmic reticulum - series of canals, carry material around the cell

golgi apparatus - stores proteins until they are needed

lysosomes - hold enzymes that were created by the cell, purpose of the lysosome is to digest things.

mitochondrion - provide the cell with energy (powerhouse)

vacuole - fluid filled space, water, sugar, minerals & proteins
(Much larger in plant cells)

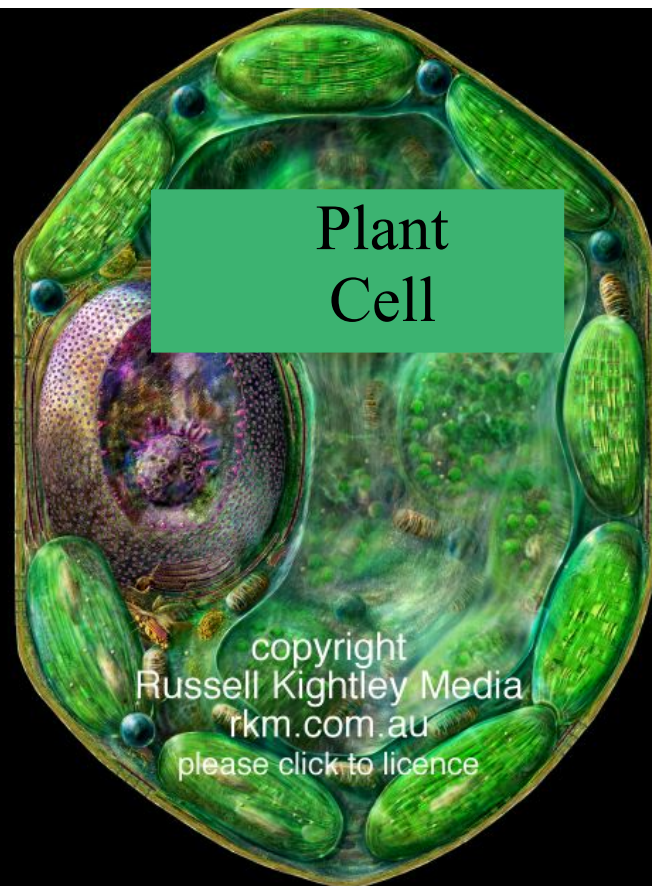
Components only found in Animal Cells

centriole - small protein structure, only in animal cells
needed for in cell division

Components only found in Plant Cells

cell wall- composed of cellulose, protects and supports cell

chloroplast - contains chlorophyll, used in photosynthesis,
makes the plant green

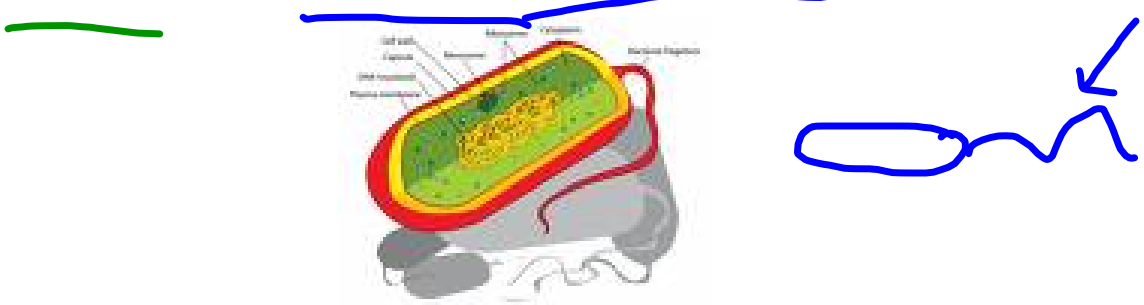


copyright
Russell Kightley Media
rkm.com.au
please click to licence

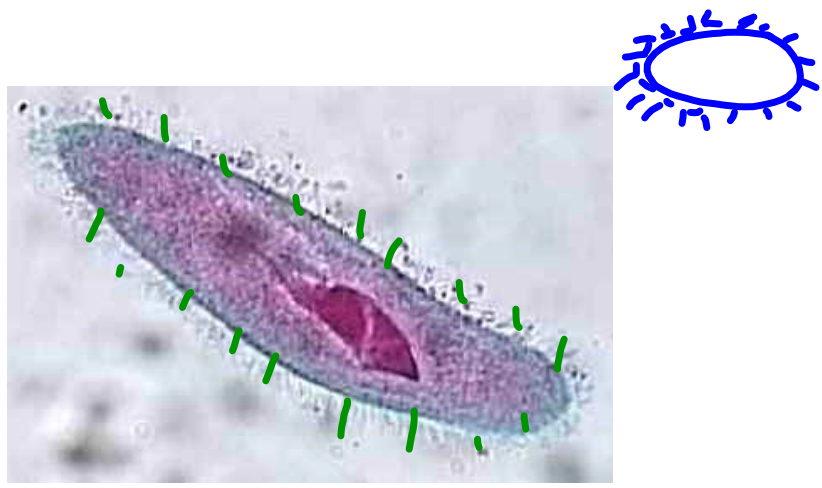
Cells have components outside of the cell membrane that help the cell move around. Two techniques are:

How do Cells Move

1) Flagellum is a whip like tail that helps the cell move



2) Cilia are hair like structures that move that cell or the cells surroundings



Case study

In groups of two:

- Read pages 144-147
- discuss and answer questions a to q

Spontaneous Generation

NOTE:

If a student in your group is not contributing to your discussion they will be removed and asked to work on the case study by themselves.

→ living things came from non-living things
Flies came from dead meat