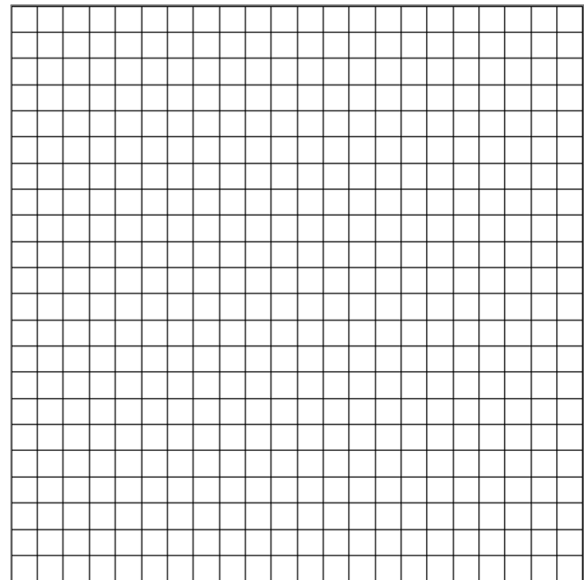


# Warm-up

April 1, 2019

1. Write the equation for the following

x	y
1	3
2	5
3	7
4	9



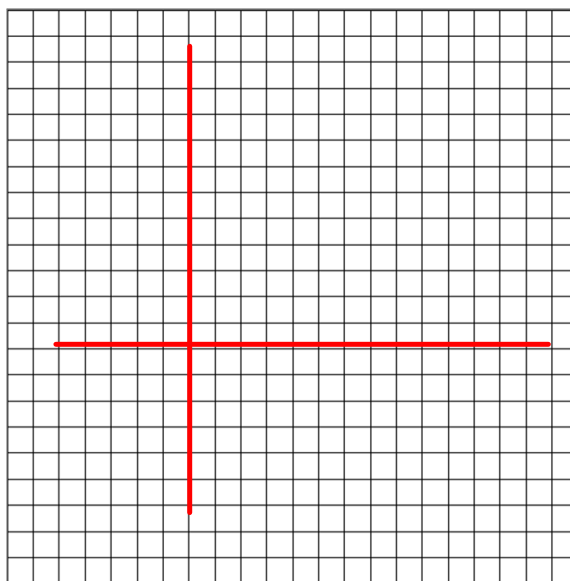
2. Graph the table of values.

Graph the following:

A.  $x - 5 = -3$

B.  $14y = 7$

C.  $2x - y = 7$

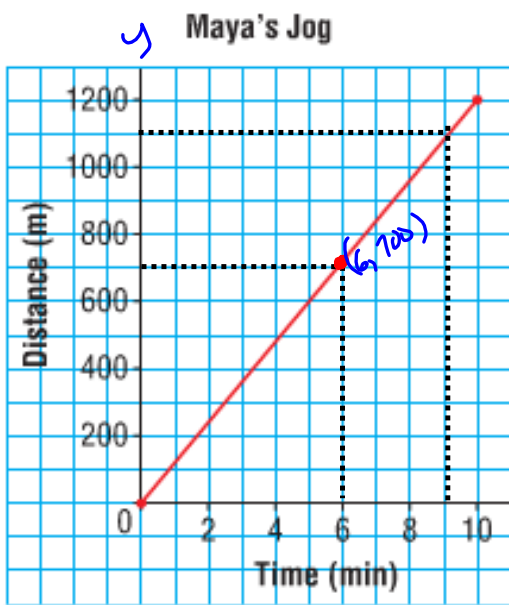


# Section 4.5 Using Graphs to Estimate Values

Terms to know:

**Interpolation:** to estimate values that lie BETWEEN 2 data points on a graph

**Extrapolation:** extend the graph to make a prediction. The assumption is the relation is linear and will continue to be linear. *[Sometimes you may have to extend the graph]*



Using the graph provided estimate the followir

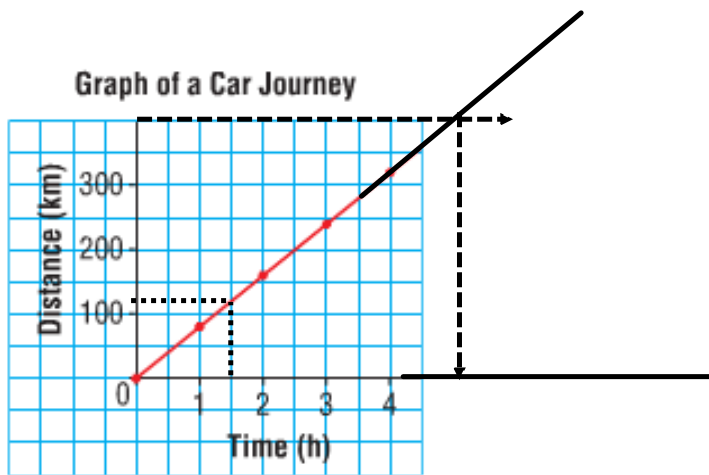
A. the amount of time to travel 700 m.

6 min

B. the distance covered in 9 min

1100 m

X



Using the graph provided

- A. estimate the distance covered by the car after 1.5 h. 120, 125 km
- B. estimate the time needed to go 400 km. ~5h  
about; approximately

## Homework Page 196

4, 5, 7, 8, 9 } Answers  
Pg 498

Worksheet ~~1-4~~ 1-2

Answers on  
Sheet