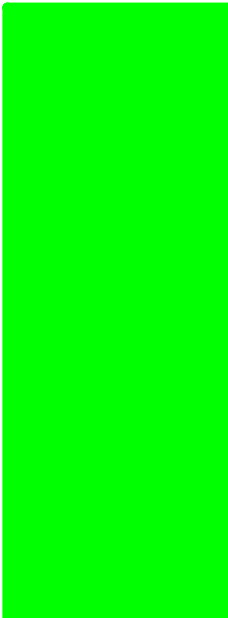


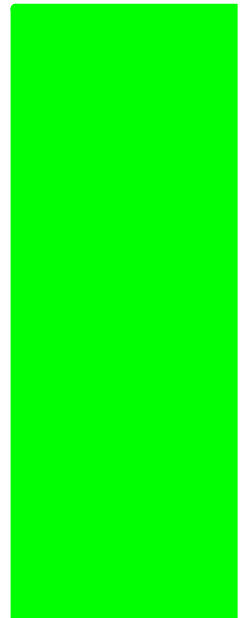
Starting with the sun, can you list  
the planets?



My  
Very  
Excited  
Mother  
Just  
Served  
Us  
Nachos

**Sun**

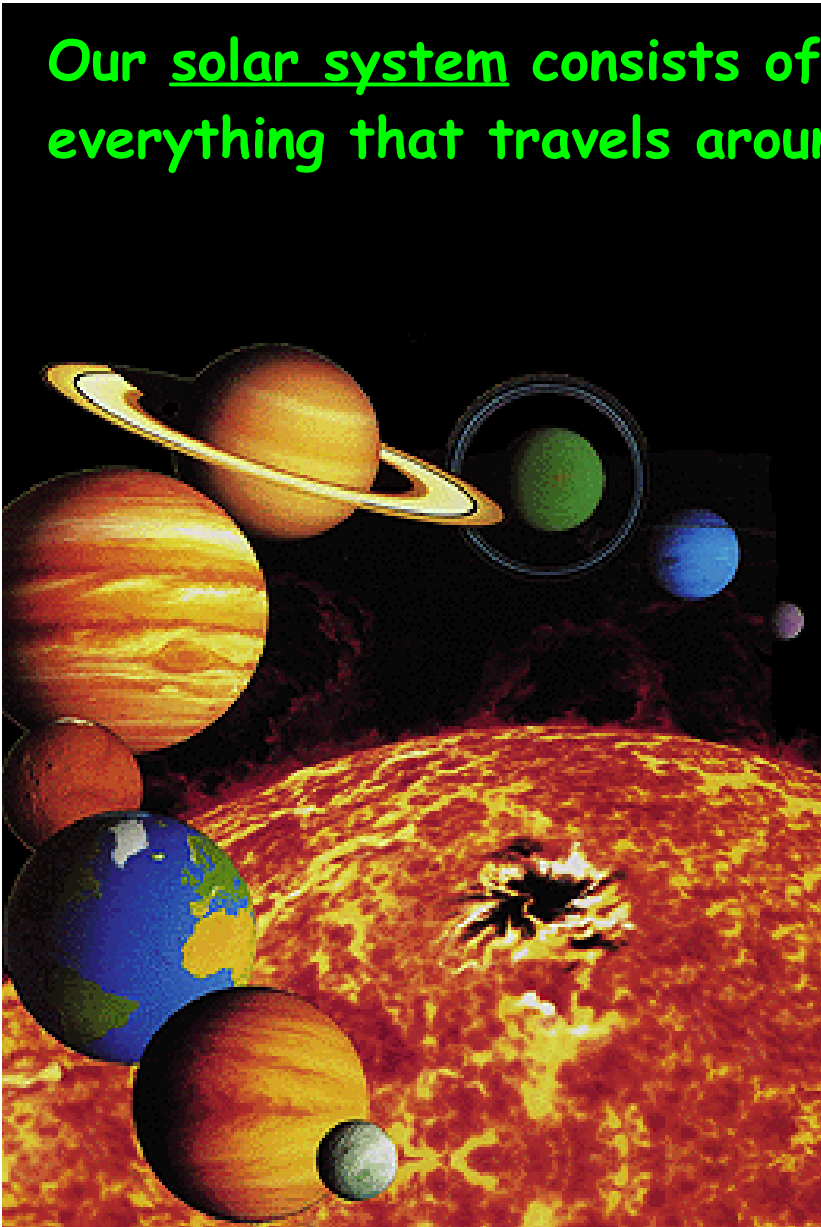
**Mercury**  
**Venus**  
**Earth**  
**Mars**  
**Jupiter**  
**Saturn**  
**Uranus**  
**Neptune**



Our solar system consists of the sun and everything that travels around it.

Planets and moons do not emit their own light. They are nonluminous. We can see them because light from the sun reflects off them.

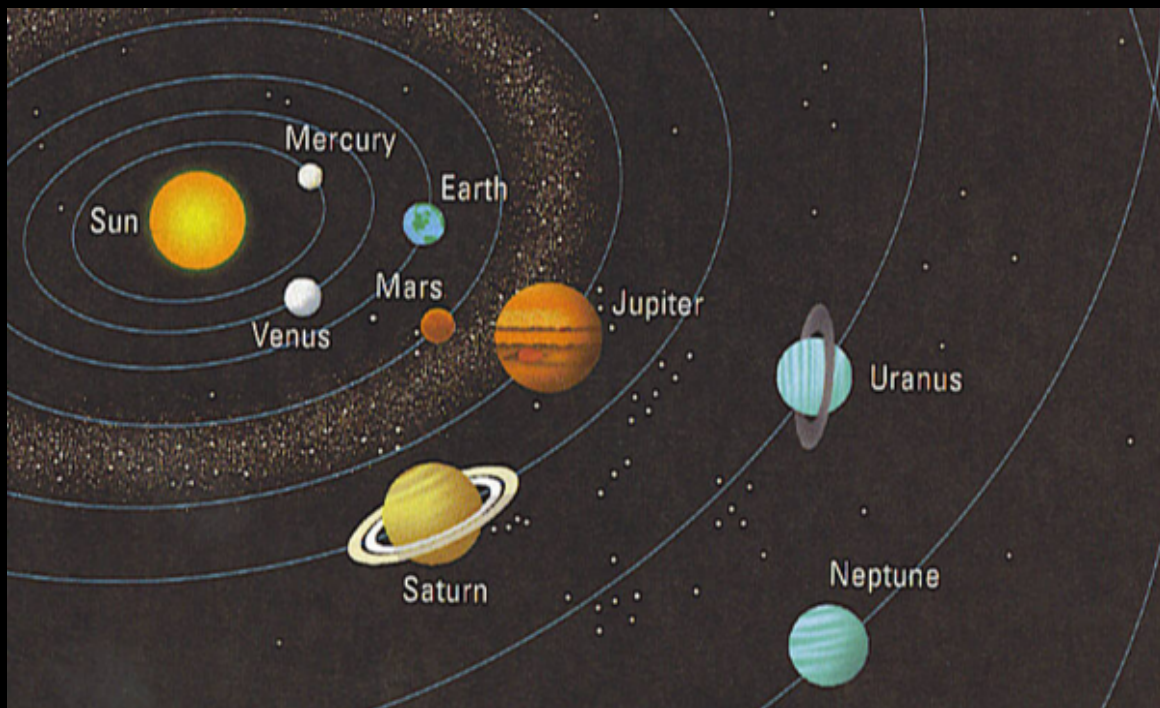
**FUN NOTE:**  
Everything in the solar system is much closer to earth than the stars.

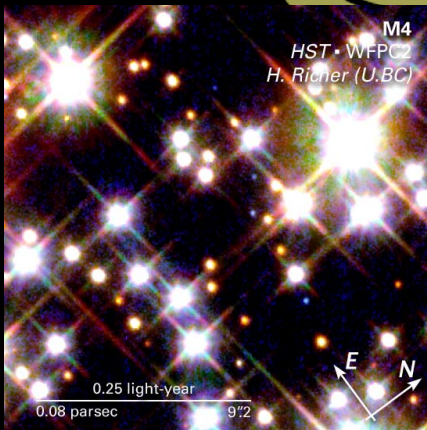
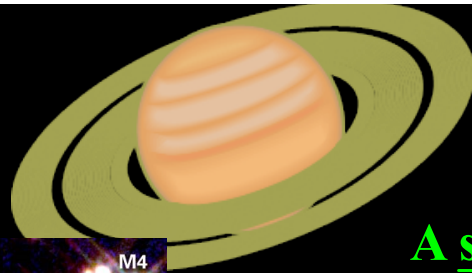


## How come we can't see all the planets

**The sun is very bright, so objects close to it get hidden in the daytime glare.**

**So when Mercury comes close to the sun it becomes difficult to see from Earth.**





A star is matter that emits huge amounts of energy.

A planet is matter that revolves around a star.

## Attachments

---

Natural Science 9 Course Outline 2018 (Semester 2).pdf