



Warm-Up
Sept. 28, 2018



1. $20 \div 4$
5

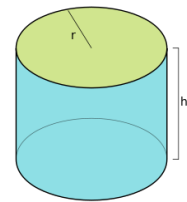
4. 3×12
36

2. 7×30
210

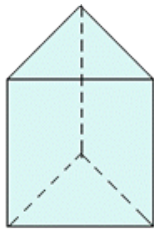
5. 45×2
90

3. 14.3×10
143

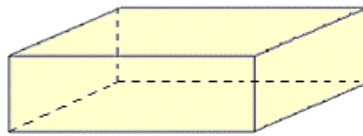
Unit 4



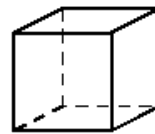
Measuring Prisms and Cylinders



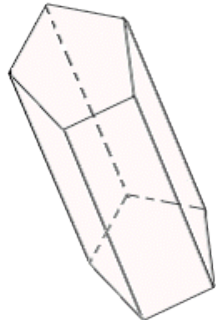
Triangular Prism



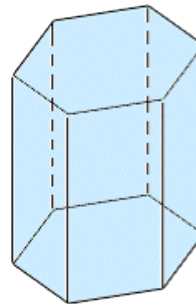
Rectangular Prism



Cube



Pentagonal Prism



Hexagonal Prism

Prisms

NAME EACH OF THESE PRISMS

PRISMS GET THEIR NAMES FROM THE SHAPES THEY ARE BASED ON

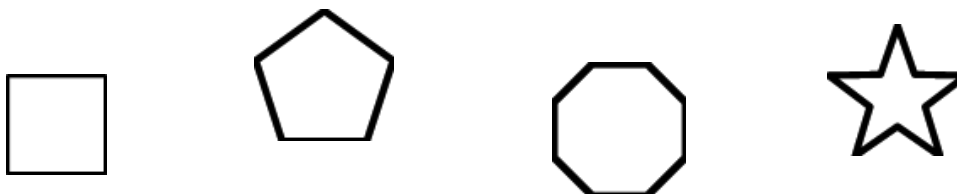
PRISMS HAVE TWO FACES THAT ARE THE SAME SHAPE

& ALL THE OTHER FACES ARE RECTANGLES

© www.adrianbruce.com

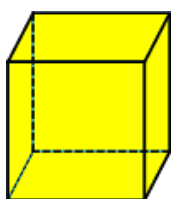
Draw and Construct Nets for 3D Objects.

Polygon - a closed shape that consists of line segments

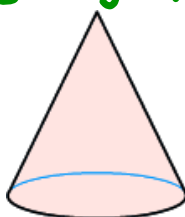


A regular polygon has all sides equal and all angles equal.

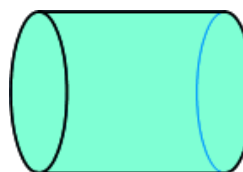
Polyhedron - an object with faces that are polygons
- 3D object



Face?

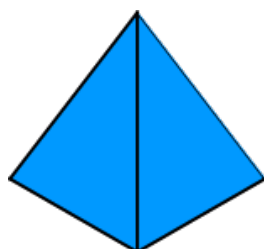


Face?

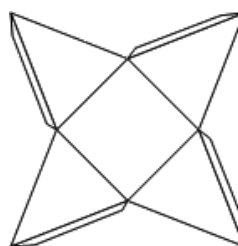


Face?

Net - is a 2D representation of a 3D object that can be folded to recreate the shape.



pyramid

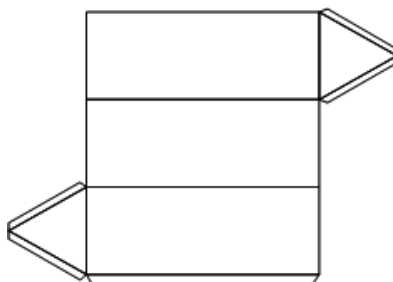
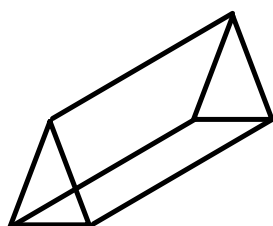


net of a pyramid

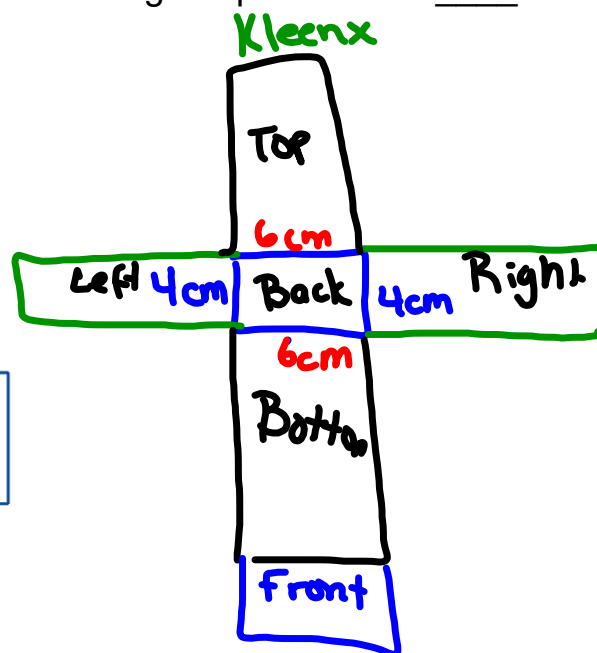
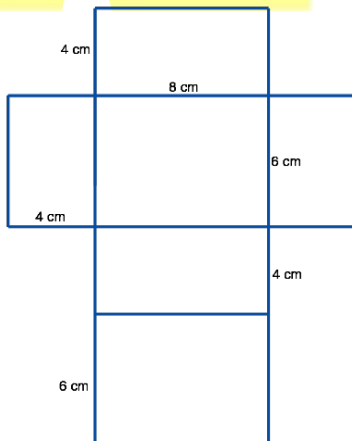
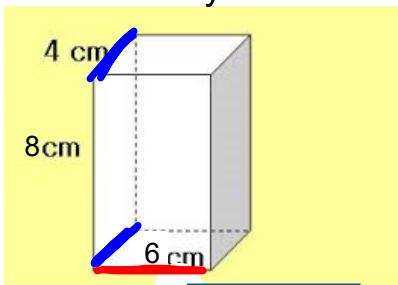
A net shows all of the faces of an object.

Two faces meet at an edge.

Three or more edges meet at a vertex.

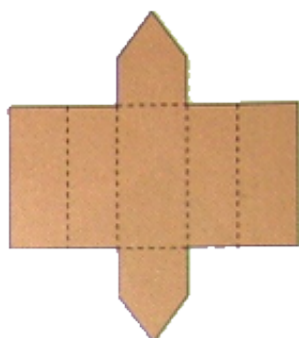
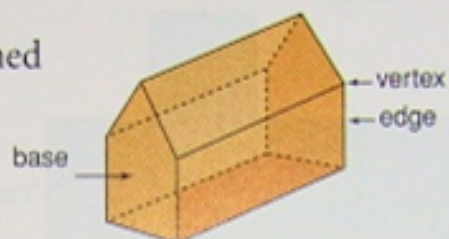


How many faces does the rectangular prism have? _____



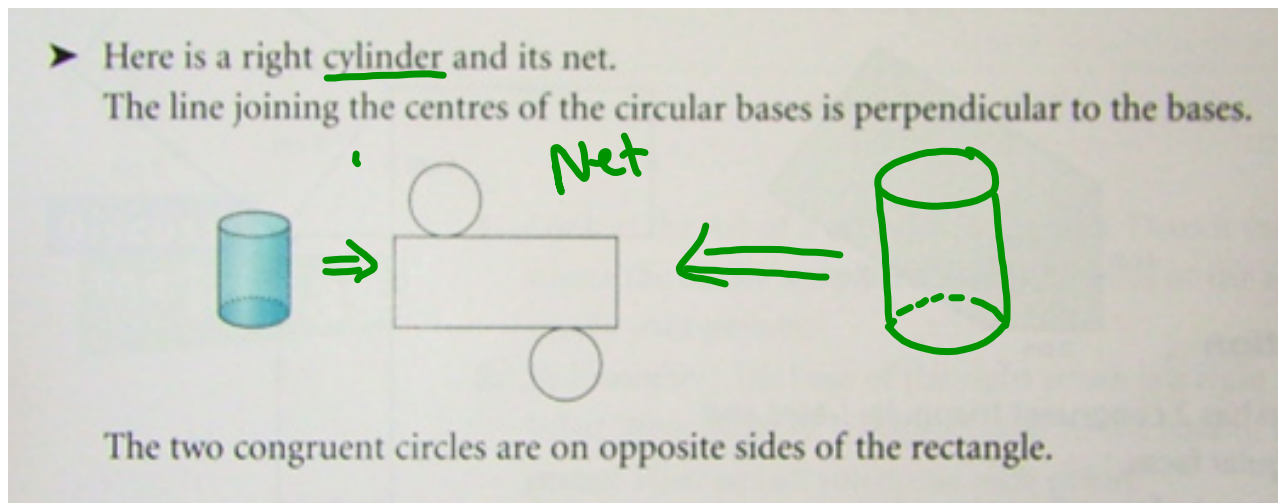
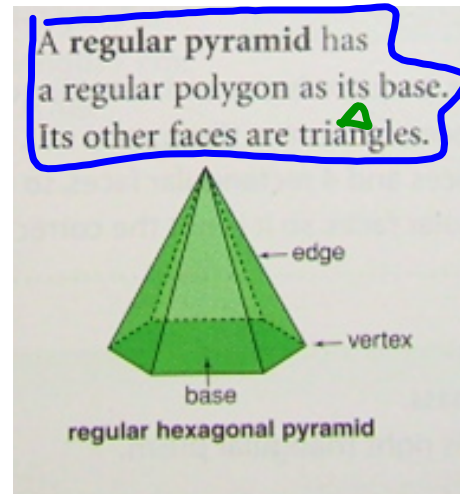
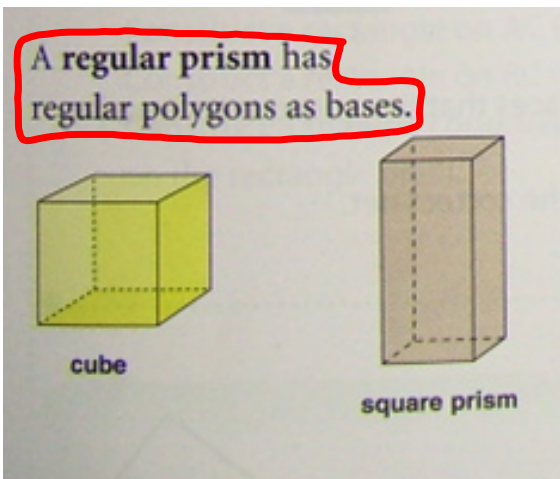
- A *prism* has 2 congruent bases and is named for its bases.

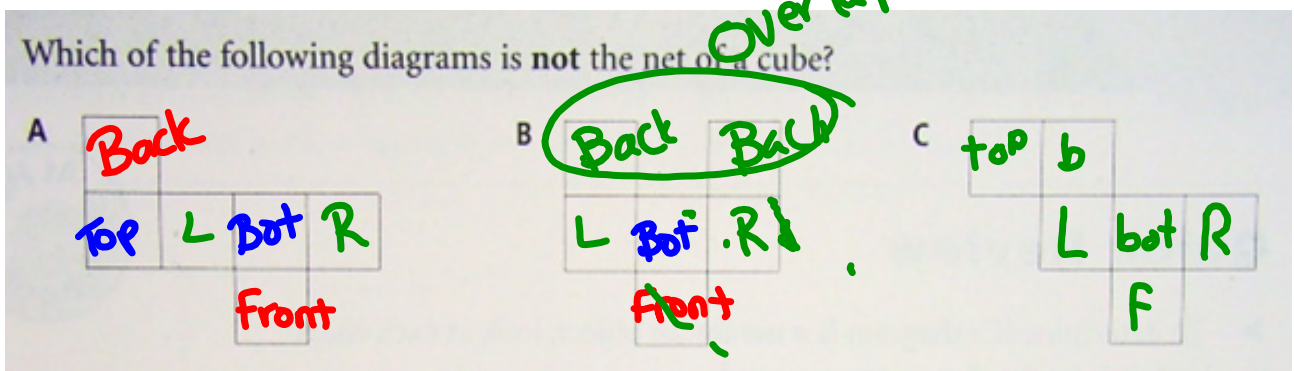
When all its faces, other than the bases, are rectangles and they are perpendicular to the bases, the prism is called a **right prism**. Here is a right pentagonal prism and its net.



Remember

A regular polygon has all sides equal and all angles equal.





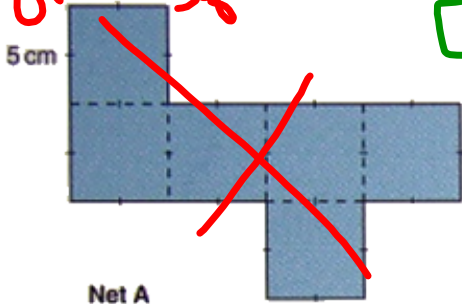
Cube

Not
Cube

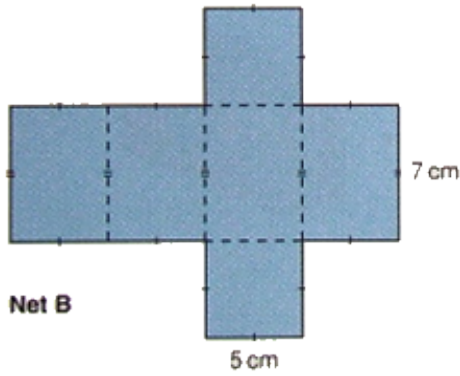
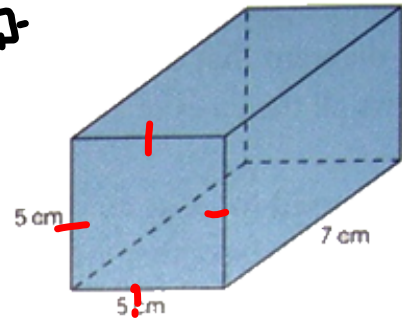
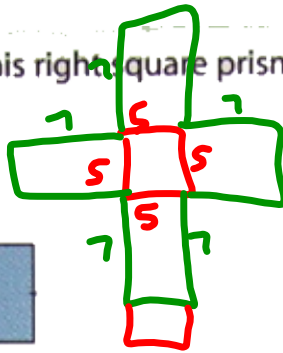
Which diagram is the net for this right square prism?

only squares

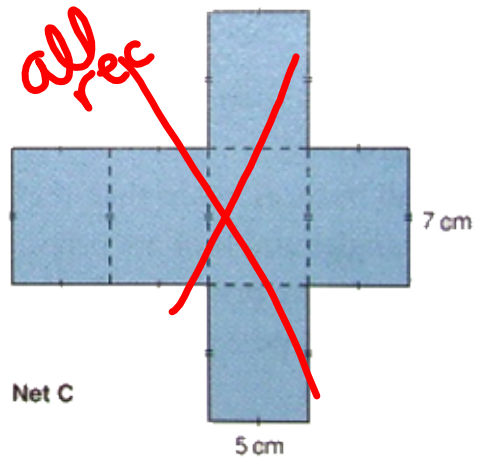
*4 □
2 ⊕*



Net A



Net B

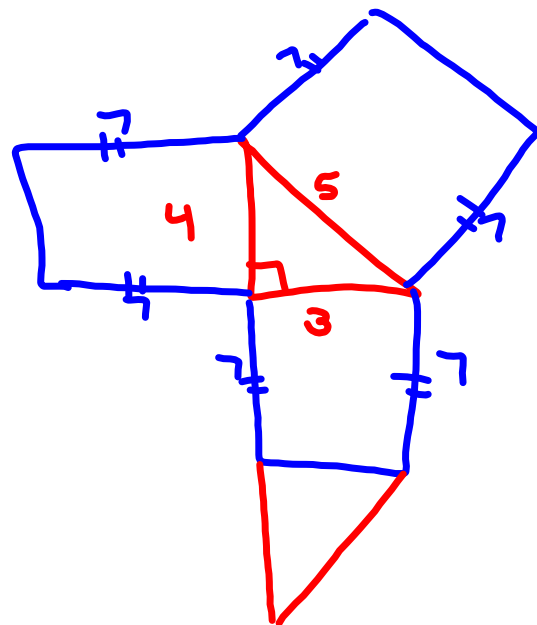
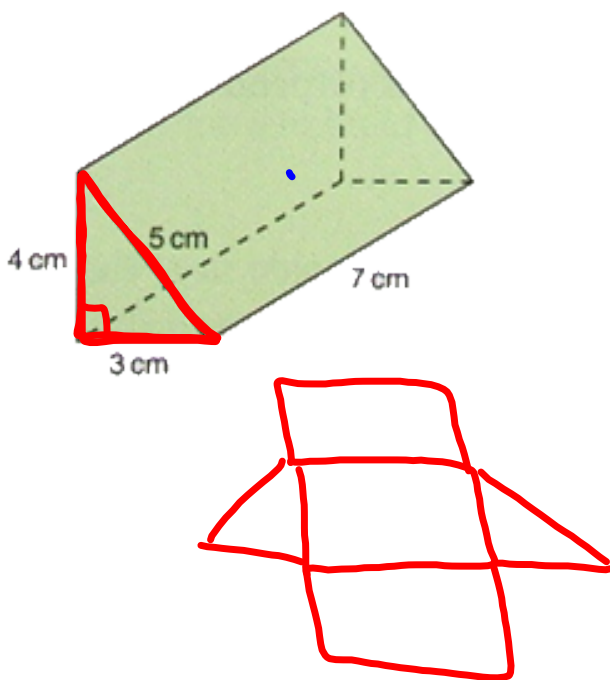


all rec

Net C

A Solution

Draw a net of this right triangular prism.



Hint: Start with the base face which is a _____

Class/Homework

L/R ^{Bot}/_{Top} Front
Back

Page 174

4, ~~#5~~, #6 M.C

↓
Not on dot
just net