

$$\left(\frac{1}{8} - \frac{7x^2}{4x^2}\right) \times 4\frac{4}{9}x - 1\frac{4}{9}$$

$$\left(\frac{1}{8} - \frac{14}{8}\right) \times \frac{40}{9} - \frac{13}{9}$$

$$\frac{-13}{8} \times \frac{40}{9} - \frac{13}{9}$$

$$\frac{6760}{648}$$

$$= 10\frac{280}{648} = 10\frac{35}{81}$$

$$\frac{6}{7} \times \frac{1}{2} - \left( \frac{1}{2} - \frac{16}{9} \right)$$

$$\frac{6}{7} \times \frac{1}{2} - \left( \frac{9}{18} - \frac{32}{18} \right)$$

$$\frac{6}{7} \times \frac{1}{2} - \frac{-23}{18}$$

$$\frac{6}{7} \times \frac{1}{2} - \frac{-23}{18}$$

$$\frac{108}{252} - \frac{-322}{252}$$

$$\frac{430}{252}$$

$$\frac{178}{252}$$

$$\frac{189}{126}$$

# Unit 3

## Rational Numbers

### Test Review

Least to greatest... answer has to be original forms

$-\frac{1}{6}$ ,  $-2.25$ ,  $-0.16$

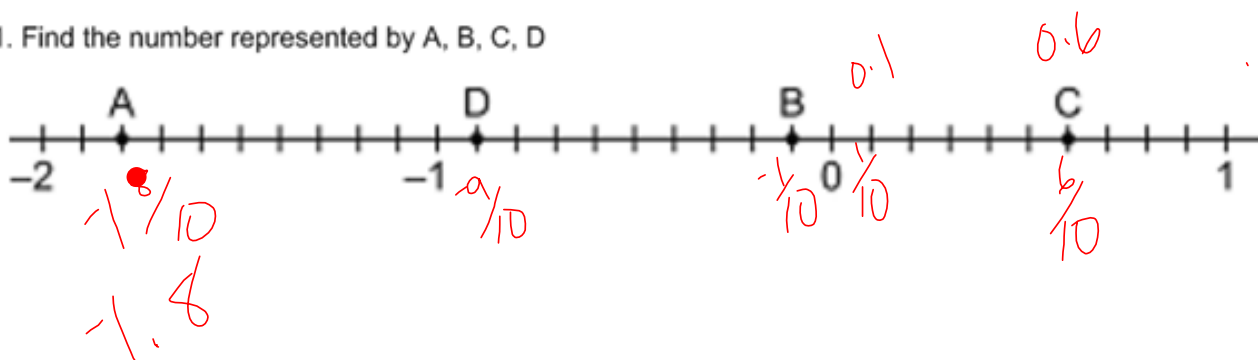
$\frac{5}{4}$ ,  $-1.5$ ,  $1.25$

$-\frac{1}{8}$ ,  $0.9$ ,  $-0.56$ ,  $-0.125$

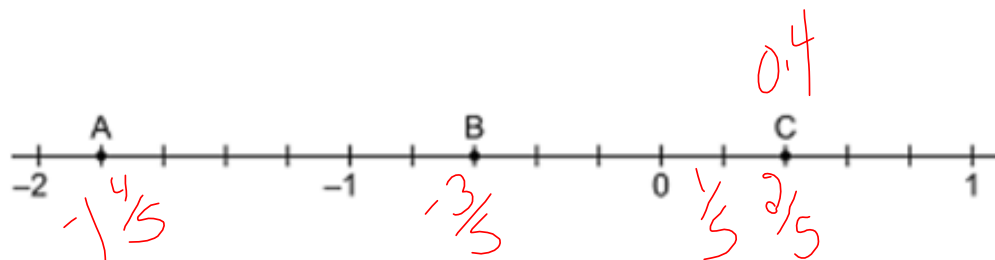
$-2.25, -1.50, -0.56, \frac{1}{6}, \frac{1}{8}, 0.9, \frac{5}{4}$

Neg	Positive
$-0.16$	$0.9$
$-2.25$	$1.25$
$-1.50$	
$-0.125$	
$-0.56$	

1. Find the number represented by A, B, C, D



2.



	1, 2, 3, ...	0, 1, 2, ...	No Decimals Whole # or it's opposite	Terminate or Repeat	No pattern Doesn't stop
	Natural	whole	integers	rational	irrational
-3			✓	✓	
$\frac{1}{4} = 0.25$				✓	
7	✓	✓	✓	✓	
4.263...					✓
0		✓	✓	✓	

4.222, ...

$$\left(-2\frac{1}{5}\right) \div \left(-4\frac{3}{4}\right) \times 2\frac{2}{5} + \left(-4\frac{1}{2}\right)$$

$$-\frac{11}{5} \div -\frac{19}{4} \times \frac{12}{5} + -\frac{9}{2}$$

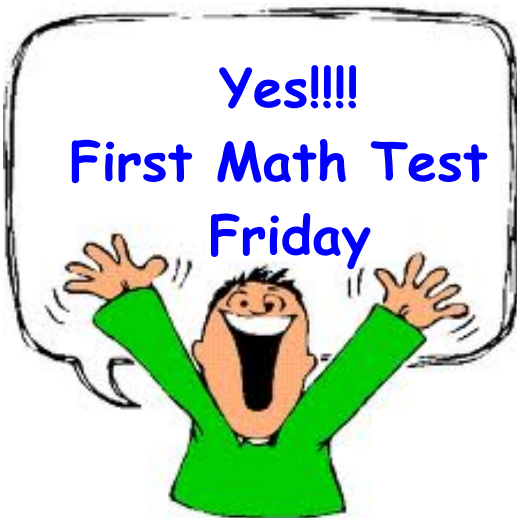
$$-\frac{11}{5} \times \frac{4}{19} \times \frac{12}{5} + -\frac{9}{2}$$

$$\frac{528}{475} + \frac{-9 \times 475}{2 \times 475}$$

$$\frac{1056}{950} + \frac{-4275}{950}$$

$$= \frac{-3219}{950}$$

$$= \frac{-3369}{950}$$



Answer  
Key 485

# Homework Test Review

page 144-145

1, 2, 6, 7 [b,c], 8, 10, 11  
[c,d], 12

15, 16 [c, d], 19 [all],  
23 [all]

omit g



