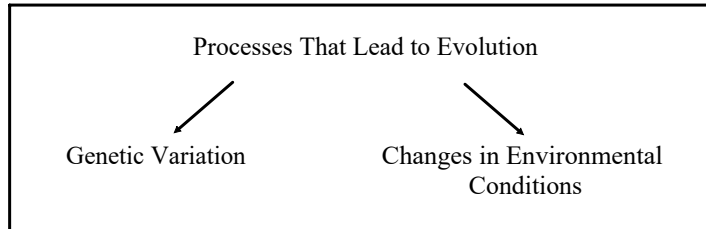


Notes - Biological Evolution, Adaptations and Natural Selection.pdf

Biological Evolution, Adaptations and Natural Selection

(Draper - Page 83)

biological evolution - change in inherited characteristics of a population from generation to successive generation
 - touted as the driving force of adaptation to environmental change



genes - segments of DNA found in chromosomes
 - impart certain inheritable traits in organisms

gene pool - sum of all genes possessed by the individuals of a population

mutations - random and unpredictable changes in DNA molecules that can be transmitted to offspring
 - can be caused by external environmental agents (X-rays, ultraviolet light) and toxic organic chemicals

genetic variability - result of millions of random changes in the DNA molecules of individuals in a population

adaptation - any genetically controlled characteristic (structural, physiological or behavioural) that enhances the chance for members of a population to survive and reproduce in their environment

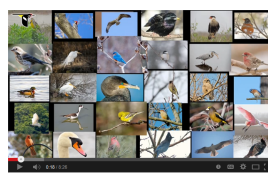
structural adaptations - coloration, mimicry, protective cover, gripping mechanisms

physiological adaptations - ability to poison prey, give off chemicals to repel predators, hibernate during cold weather

behavioural adaptations - migration, resource partitioning, species interactions (ie/parasitism)

natural selection - process by which the best adapted organisms survive and reproduce in a given environment

speciation - the formation of two or more species from one as the result of divergent natural selection in response to changes in environmental conditions

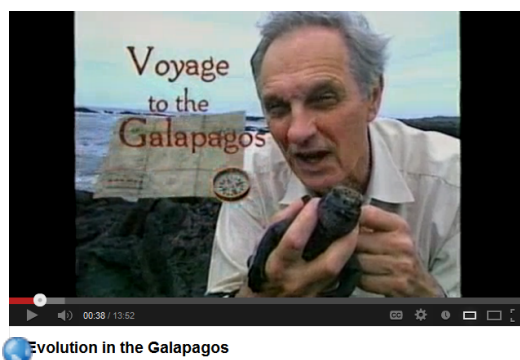


Speciation: An Illustrated Introduction

extinction - process by which a species is eliminated from existence when it cannot adapt genetically and reproduce successfully under new environmental conditions

Processes that lead to Evolution...

1) Changes to the environment



2) Changes to the genetics



EcoPoint Opportunity...

[Print Word Document and/or Email]

hallihana@nbed.nb.ca

- 2 species per adaptation (structural/physiological/behavioral)
- state the adaptation & need pictures for each

10 ecopoints per adaptation

Attachments

Notes - Biological Evolution, Adaptations and Natural Selection.pdf