

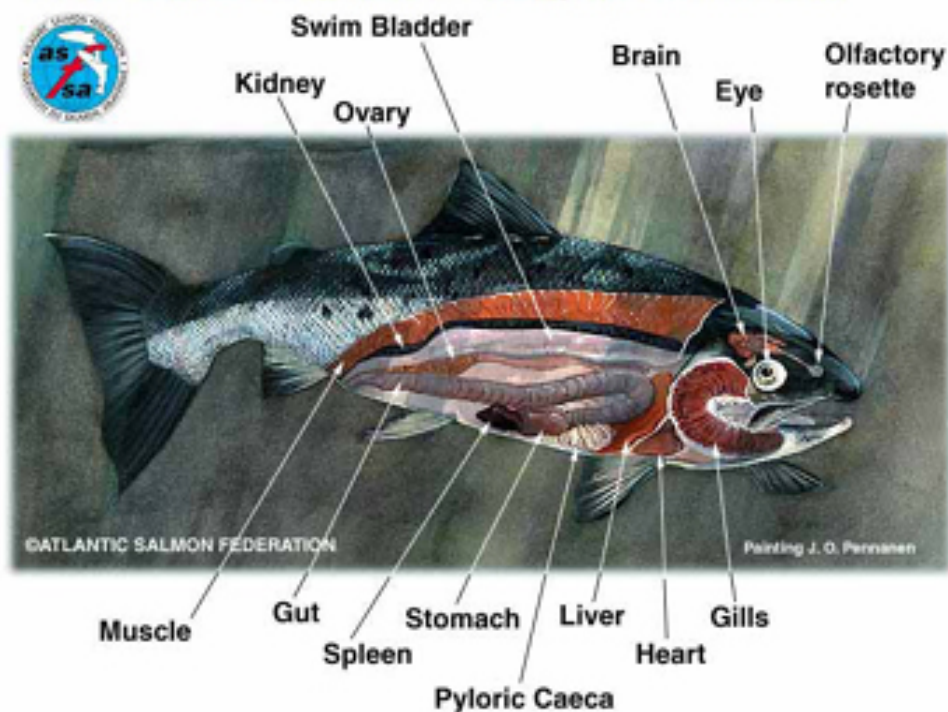
<http://stripedbass.ca/home.html>

- spawn in the Spring
- eggs free float in water column
- \* Brackish water... NW Miramichi
- 'Rock Fights' on surface where males circle around female and hit belly to make eggs release...then fertilized
- eggs hatch in 2 to 3 days
- larvae have a yolk sac...5 days then feed
- larvae become juveniles after 40 days
- juvenile in freshwater to grow over summer
- juvenile goes out to ocean in Fall
- juvenile grows into Adult in Ocean
- Adult returns to spawn in freshwater

## Internal Anatomy of an Atlantic Salmon

---

**Wild Atlantic salmon - designed for survival**



# External Anatomy of an Atlantic Salmon

