

Warm-up

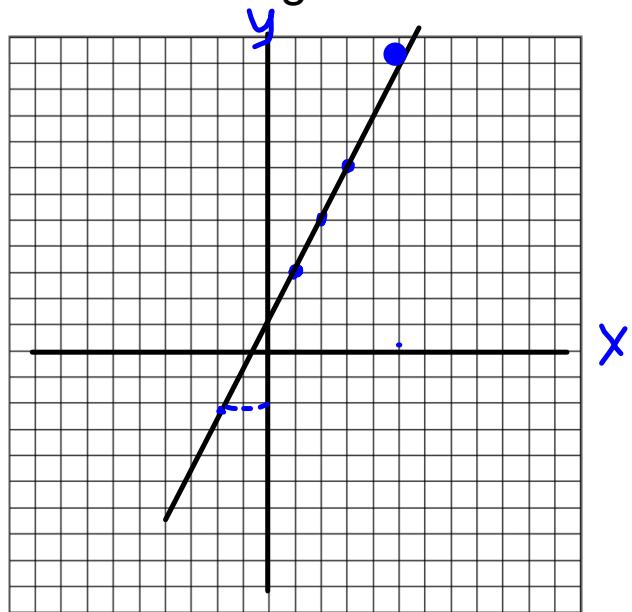
April 3, 2018

1. Write the equation for the following

x	y
1	3
2	5
3	7
4	9

$y = 2x + 1$

$\begin{matrix} >+2 \\ >+2 \\ >+2 \end{matrix}$



2. Graph the table of values.

$x = -2 \quad y =$

Graph the following:

(V) A. $x - 5 = -3$
 $x + 5 + 5 = -3 + 5$
 $x = 2$

B. $\frac{14y}{14} = \frac{7}{14}$
 $y = \frac{1}{2} = 0,5$

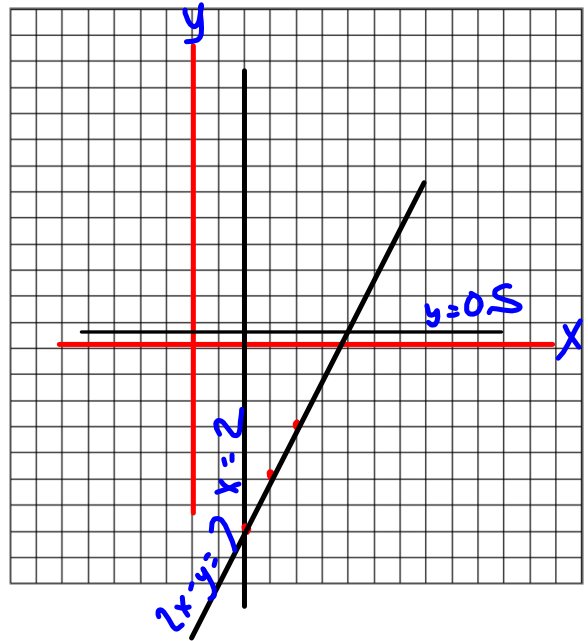
C. $2x - y = 7$

x	y
0	-7
1	-5
2	-3

$x = 0$
 $2x - y = 7$
 $2(0) - y = 7$
 $-y = 7$
 $\frac{-y}{-1} = \frac{7}{-1}$
 $y = -7$

$x = 1$
 $2x - y = 7$
 $2(1) - y = 7$
 $2 - y = 7$
 $\boxed{2-2} - y = 7-2$
 $-y = 5$
 $y = -5$

$x = 2$
 $2x - y = 7$
 $2(2) - y = 7$
 $4 - y = 7$
 $\boxed{4-4} - y = 7-4$
 $-y = 3$
 $\frac{-y}{-1} = \frac{3}{-1}$
 $y = -3$

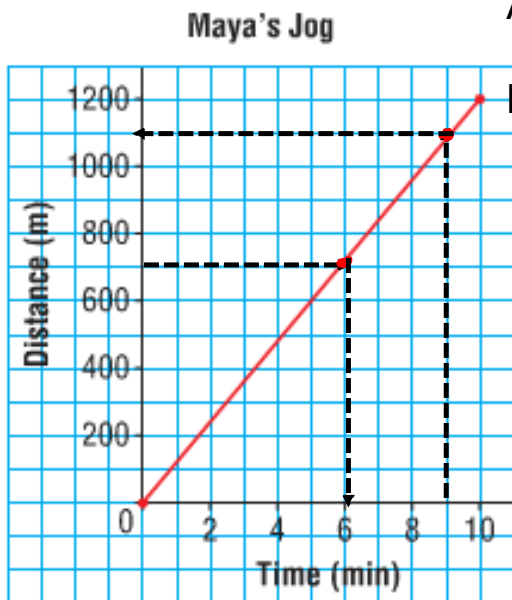


Section 4.5 Using Graphs to Estimate Values

Terms to know:

Interpolation: to estimate values that lie BETWEEN 2 data points on a graph

Extrapolation: extend the graph to make a prediction. The assumption is the relation is linear and will continue to be linear. *[Sometimes you may have to extend the graph]*



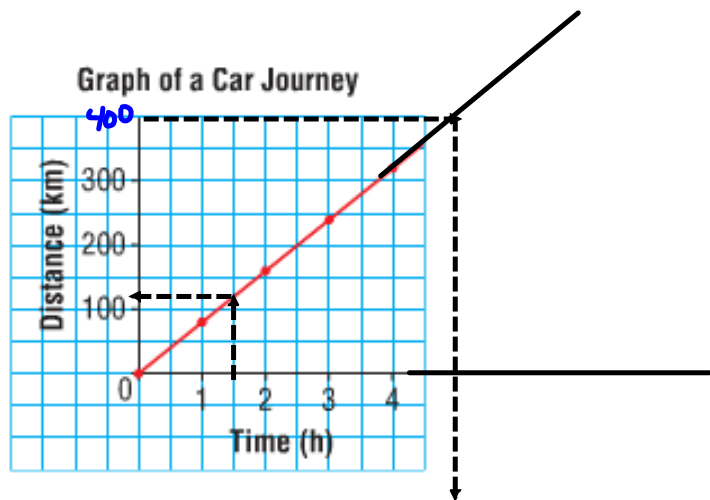
Using the graph provided estimate the followir

A. the amount of time to travel 700 m.

B. the distance covered in 9 min

6 min
1100m





Using the graph provided

- A. estimate the distance covered by the car after 1.5 h. 110-120
- B. estimate the time needed to go 400 km. ~5

Homework Page 196

4, 5, 7, 8, 9 } Answers
Pg 498

Worksheet 1-4

Answers on
Sheet