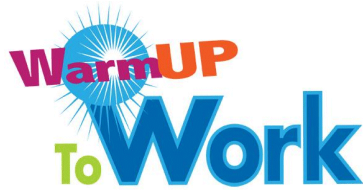


Feb. 3, 2017  
Friday

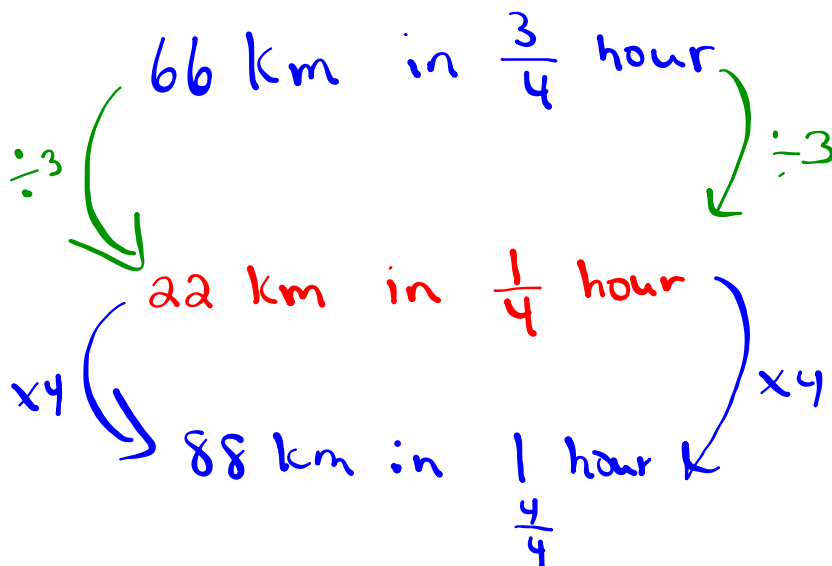


Grade 8

$$\begin{aligned}
 1) & 2\frac{7}{8} \div 1\frac{1}{5} \\
 & = \frac{23}{8} \div \frac{6}{5} \quad \text{↷} \\
 & = \frac{23}{8} \times \frac{5}{6}
 \end{aligned}$$

$$= \frac{115}{48} = 2\frac{19}{48}$$

- 2) A car can travel 66 km in  $\frac{3}{4}$  of an hour. How far will it travel in 1 hour?



$$\begin{array}{l} \frac{1}{6} \text{ of } 60 = 10 \\ \downarrow \times 5 \\ \frac{5}{6} \text{ of } 60 = 50 \end{array}$$

pg 151

$$3 \text{ a) } \frac{2}{3} + \frac{1}{4}$$

$$\frac{8}{12} + \frac{3}{12} = \frac{11}{12}$$

cups of liquid

$$b) \frac{1}{3} \text{ of } 165$$

Homework  
Solutions

$$\frac{1}{3} \times 165 = \frac{165}{3} = 55$$

$$\frac{1}{3} \text{ of } 150 = 50$$

$$\frac{1}{3} \text{ of } 15 = 5$$

55 silver caps

$$c) \frac{3}{4} - \frac{3}{8}$$

$$\frac{6}{8} - \frac{3}{8} = \frac{3}{8}$$

She need  $\frac{3}{8}$  more

$$d) \frac{5}{12} \times 2 = \frac{10}{12} \text{ was shared}$$

$$4 \quad \frac{2}{3} + \frac{1}{4}$$

$$\frac{8}{12} + \frac{3}{12} = \frac{11}{12}$$

He had  $\frac{11}{12}$  cans of paint.

$$5. \quad 5 \div \frac{1}{8}$$

$$5 \times \frac{8}{1} = 40$$

The team scored 40 goals.

$$\frac{1}{8} \text{ of Total} = 5$$

$$\frac{1}{8} \times \text{Total} = 5$$

$$\frac{1}{8} \text{ is } 5$$

$$\text{so } \frac{8}{8} = 8 \times 5$$

$$= 40$$

6. morning + afternoon

$$\frac{1}{6} + \frac{1}{3}$$

$$\frac{1}{6} + \frac{2}{6} = \frac{3}{6} \text{ or } \frac{1}{2}$$

 $\frac{1}{2}$  attended in the evening

$$b) \frac{1}{2} \text{ of } 30$$

$$\frac{1}{2} \times 30 = \frac{30}{2}$$

= 15 parents attended in the evening

# *Class / Homework*

Page 151 # 7 to #14

When you are done  
this work on the  
provided worksheet

Unit 3 Test Wednesday, Feb. 8, 2017

Sheet 1



Sheet 2



## Divide and Reduce (Show ALL Work)

1)  $2\frac{2}{5} \div 3\frac{1}{2} =$

9)  $3\frac{2}{3} \div 3\frac{3}{4} =$

2)  $2\frac{8}{9} \div 2\frac{3}{5} =$

10)  $2\frac{3}{7} \div 2\frac{1}{2} =$

3)  $4\frac{1}{3} \div 2\frac{1}{3} =$

4)  $4\frac{3}{5} \div 4\frac{2}{7} =$

5)  $4\frac{3}{4} \div 2\frac{8}{9} =$

6)  $2\frac{1}{5} \div 4\frac{1}{2} =$

7)  $2\frac{1}{6} \div 2\frac{4}{7} =$

8)  $3\frac{5}{6} \div 4\frac{3}{8} =$

## Multiply and Reduce (Show ALL Work)

1)  $3\frac{3}{7} \times 4\frac{1}{3} =$

9)  $4\frac{5}{6} \times 3\frac{1}{3} =$

2)  $4\frac{3}{7} \times 2\frac{3}{5} =$

10)  $4\frac{1}{2} \times 4\frac{3}{7} =$

3)  $2\frac{1}{2} \times 4\frac{5}{9} =$

4)  $2\frac{1}{5} \times 2\frac{3}{8} =$

5)  $2\frac{2}{9} \times 3\frac{1}{7} =$

6)  $4\frac{2}{5} \times 2\frac{1}{4} =$

7)  $2\frac{2}{7} \times 4\frac{1}{5} =$

8)  $4\frac{3}{4} \times 4\frac{1}{2} =$

## Attachments

---

[dividing\\_mixed\\_numbers.pdf](#)

[multiplying\\_mixed\\_numbers.pdf](#)