

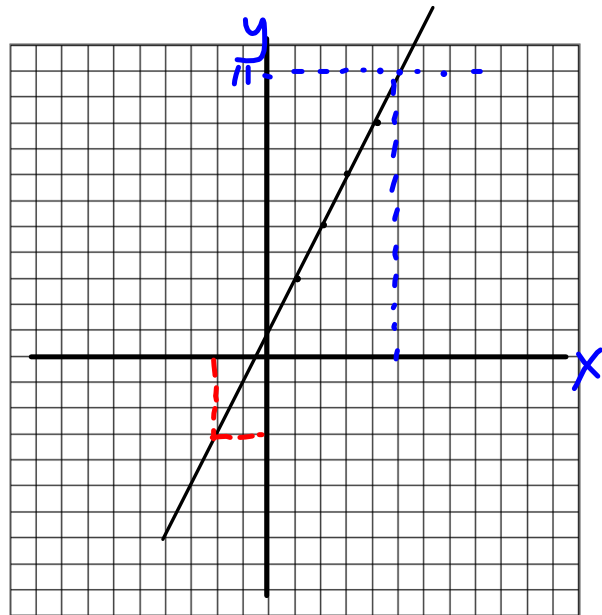
# Warm-up

April 4, 2017

1. Write the equation for the following

x	y
1	3
2	5
3	7
4	9

*Handwritten notes:* A red double-headed arrow is above the x and y headers. Blue arrows point from the y-values (3, 5, 7, 9) to the equation  $y = 2x + 1$ , which is circled in blue. The equation is written in blue ink.



2. Graph the table of values.

3. From the graph show the value of "y" if  $x = -2$ .

$(-2, -3)$

4. Using the graph find  $x$  if  $y = 11$ .

$x = 5$

# Section 4.5 Using Graphs to Estimate Values

Terms to know:

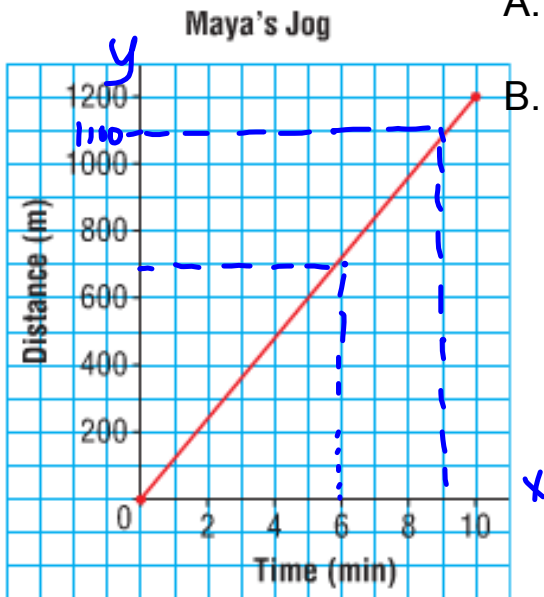
**Interpolation:** to estimate values that lie BETWEEN 2 data points on a graph

**Extrapolation:** extend the graph to make a prediction. The assumption is the relation is linear and will continue to be linear. **[Sometimes you may have to extend the graph]**

Using the graph provided estimate the followir

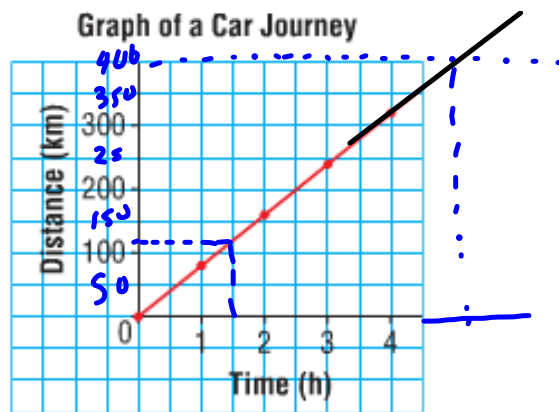
A. the amount of time to travel 700 m.

B. the distance covered in 9 min



6 min

1100 m



Using the graph provided

- A. estimate the distance covered by the car after 1.5 h. 110-115
- B. estimate the time needed to go 400 km. 5h

# Homework Page 196

4, 5, 7, 8, 9

# Worksheet 1-4

