

Representing Data Visually

Karen recorded, for a week in February, the amount of snowfall in Blackville, New Brunswick. Below is the data collected. Draw a bar graph to show her findings. **Remember to include:**

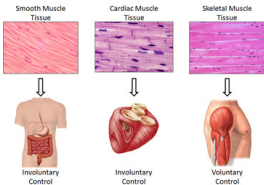
Title, Scale, Label x and y axis with titles

Be neat

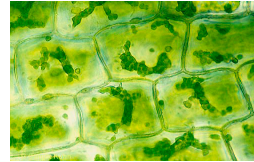
Day	Snowfall (cm)
Monday	1
Tuesday	3
Wednesday	0
Thursday	25
Friday	10
Saturday	30
Sunday	7



Pass this in

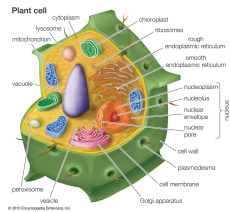
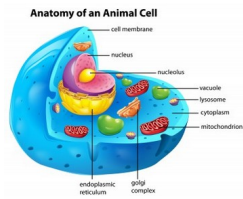


Unit 1



Cells, Tissues, Organs and Systems

Human Organ System



<p>Skeletal system provides structure to the body and protects internal organs</p>	<p>Muscular system supports the body and allows it to move</p>	<p>Digestive system breaks down food and absorbs its nutrients</p>
<p>Respiratory system takes in oxygen and releases waste gases</p>	<p>Nervous system controls sensation, thought, movement, and virtually all other body activities</p>	<p>Circulatory system transports oxygen, nutrients, and other substances to cells and carries away wastes</p>