



Warm Up

Nov. 3



1) If the area of a square is 9 m², what is the side length?

$$\begin{aligned} \text{Given Area} &= 9\text{m}^2 \\ &= \underline{3 \times 3} \end{aligned}$$

$$\text{side} = 3\text{m}$$

← Can I make a Square that has Area of 9m²

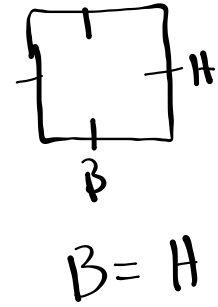
← Factors of 9
1x9 Rect
3x3 Squ

2) 91 is not a perfect square number but which two consecutive square numbers is it between?

81 100
 91

1
4
9
16
25
36
49
64
81 ← 91 would
100 ←
121
144
169
196
225

$$\begin{aligned} \text{Area of a square} &= B \times H \\ &= B \times B \\ &= B^2 \end{aligned}$$



Class/Homework

Page 8

4, #5, #6 (don't use tiles sketch rectangles),

#9 (Use graph paper), (if you don't have graph paper write out factors)

#10 (a, b, c, d JUST sketch),

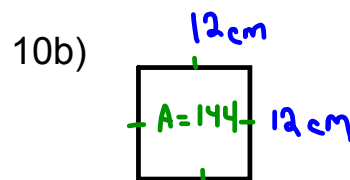
#11,

#12

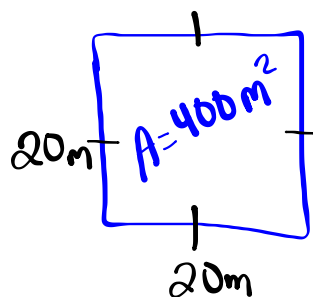
#15

#16,

#17

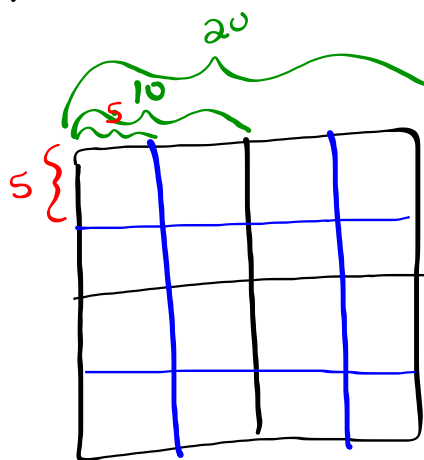
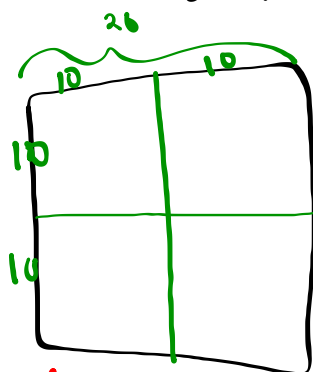


17)



$$A = \text{side} \times \text{side}$$

$$400m^2 = 20m \times 20m$$



Each plot is 5m by 5m

$$5a) \quad A = \text{side} \times \text{side}$$

$$= 8 \text{ units} \times 8 \text{ units}$$

$$= 64 \text{ unit}^2$$