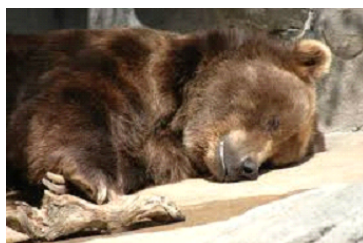


Structural adaptaons

Chameleon- has the ability to change colour

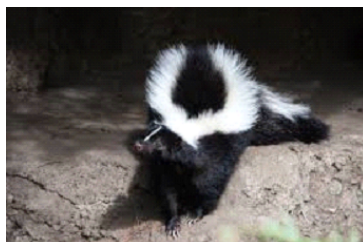


Turtle- has hard shell to protect against predators.



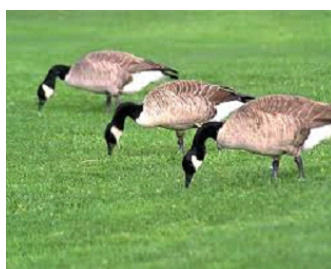
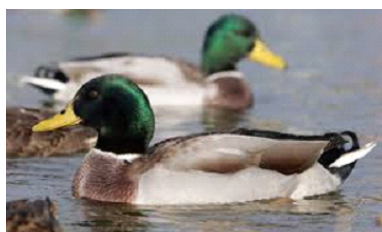
Physiological adaptaons

Bear- can hibernate through winter



Skunk- can "spray" to get rid of predators

Behavioural Structures



Geese and ducks migrate during winter

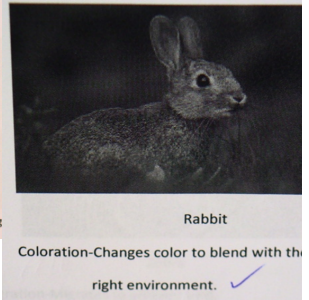
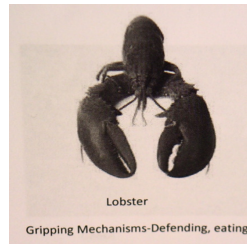
Examples of Adaptions...

Structural Adaptations:

Turtle - Protective Cover



Bald eagle – Gripping Mechanisms



Psychological Adaptations:

Skunks – give off chemicals to repel predators



Bears – hibernate during cold weather



Behavioural Adaptations:

Monarch Butterfly – migration



Salmon lice – species interactions (ie/parasitism)



ACTIVITY: Adaptations





Rudyard Kipling

Just So Stories

The Elephant's Child

http://www.youtube.com/watch?v=_C0GUajXMsg 15:55

<http://www.youtube.com/watch?v=E0rTWq4qT74> 4:24