

Warm-Up

Solve for y if $x = -2$

$$x = -2$$

A. $y = 3x - 4$

$$y = 3(-2) - 4$$

$$y = -6 - 4$$

$$y = -10$$

March 18, 2016

$$x = -2$$

B. $y = 2 - 2x$

$$y = 2 - 2x$$

$$y = 2 - 2(-2)$$

$$y = 2 - -4$$

$$y = 6$$

Create a table of values for the equation: $y = 3x + 8$

X	y
-2	2
-1	5
0	8
1	11
2	14

Show 3 calculations

① $x = -2$

$y = 3x + 8$

$y = 3(-2) + 8$

$y = -6 + 8$

$y = 2$

② $x = -1$

$y = 3x + 8$

$y = 3(-1) + 8$

$y = -3 + 8$

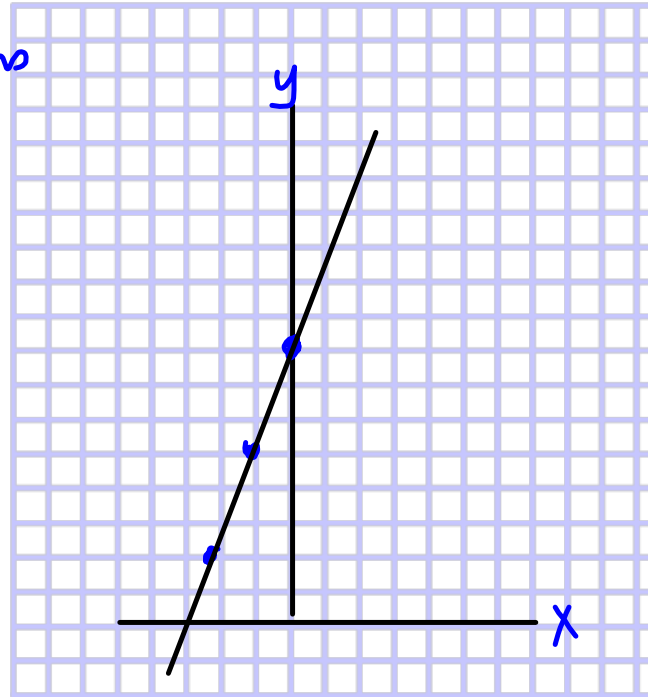
$y = 5$

③ $x = 0$

$y = 3x + 8$

$y = 3(0) + 8$

$y = 8$



A relationship has the equation: $y = 7 - 2x$

a) Create a table of values for the relation for values $x = -3$ to 3

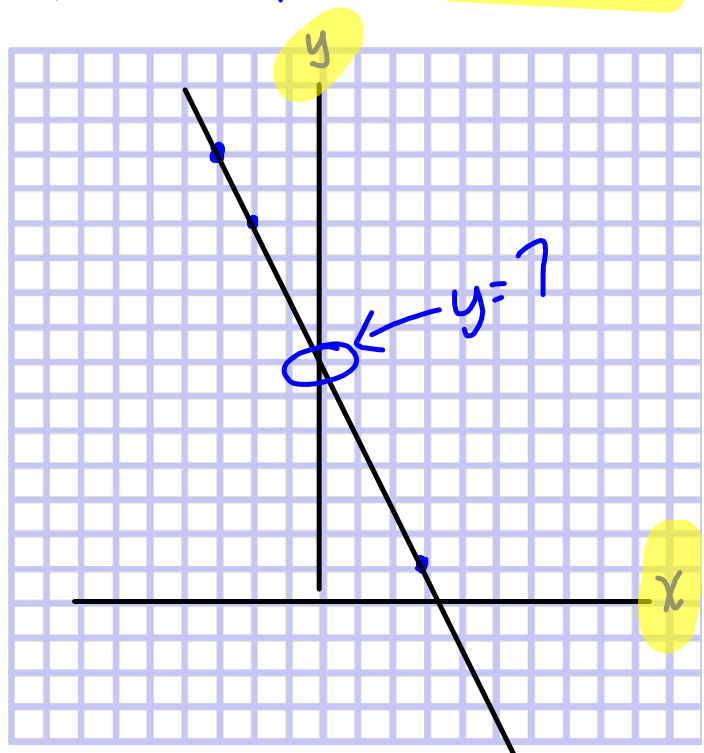
x	y
-3	13
-2	11
-1	9
0	7
1	5
2	3
3	1

① $x = -3$

$y = 7 - 2x$
 $y = 7 - 2(-3)$
 $y = 7 - (-6)$
 $y = 13$

② $x = -2$
 $y = 7 - 2x$
 $y = 7 - 2(-2)$
 $y = 7 - (-4)$
 $y = 11$

③ $x = -1$
 $y = 7 - 2x$
 $y = 7 - 2(-1)$
 $y = 7 - (-2)$
 $y = 9$



Graph the equation.

$$y = 2x + 1$$

x	y
0	1
1	3
2	5

$$x = 0$$

$$y = 2x + 1$$

$$y = 2(0) + 1$$

$$y = 1$$

$$x = 1$$

$$y = 2x + 1$$

$$y = 2(1) + 1$$

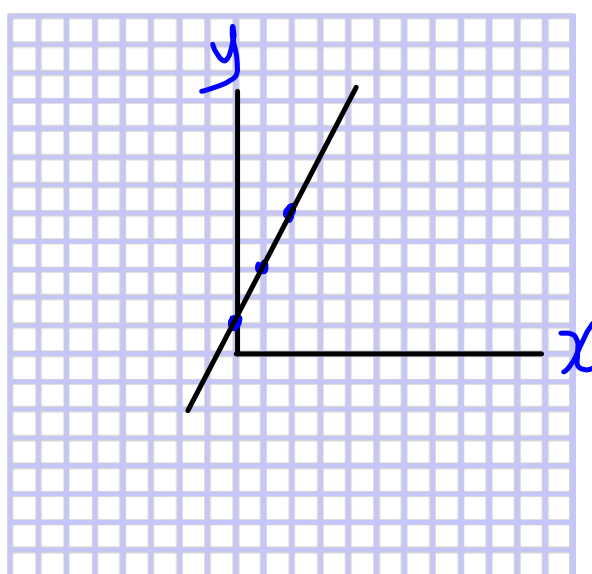
$$y = 3$$

$$x = 2$$

$$y = 2x + 1$$

$$y = 2(2) + 1$$

$$y = 5$$



This table shows a linear relationship, find the missing values.

x	y
6	-7
7	-2
8	3
9	8
10	13

} +5

1. Complete question to be handed in!!!

Class/Homework

Page 171

#8 Copy table a, b, c, d copy

#9 Copy tables

#10 Create table values and use the values given!!!

Graph a, b, c