

Warm-Up

September 11

1. Which of the following numbers are equal to $-\frac{4}{5}$?

~~$\frac{4}{5}$~~ , ~~$-\frac{5}{4}$~~ , $\frac{-4}{5}$, ~~$-\frac{4}{-5}$~~ , $-\frac{8}{10}$, $-\frac{4}{5}$

2. Which number is less? $-\frac{13}{10}$ or $-\frac{11}{6}$

-1.3

-1.8

Homework Questions???

5. Identify equal rational numbers in the list that follows.

$$\frac{2}{3} \quad \frac{-3}{2} \quad \frac{-2}{3} \quad \frac{-2}{3}$$
$$-\frac{3}{2} \quad \frac{2}{-3} \quad \frac{3}{-2} \quad \frac{3}{2}$$

6. For each rational number, write two fractions that represent the same number.

a) $\frac{7}{-9}$ b) $\frac{-5}{3}$ c) $-\frac{6}{11}$

7. Write each rational number as a decimal.

a) $\frac{6}{5}$ b) $-\frac{6}{5}$

c) $\frac{9}{4}$ d) $-\frac{11}{6}$

16. Which rational number is greater? Which strategies did you use to find out?

- a) 2.34, 2.3 b) -2.34 , -2.3
c) -1.4 , 1.4 d) 3.96 , -4.12
e) $-5.\overline{6}$, -5.6 f) $2.8\overline{6}$, 2.866

18. Which rational number is greater?

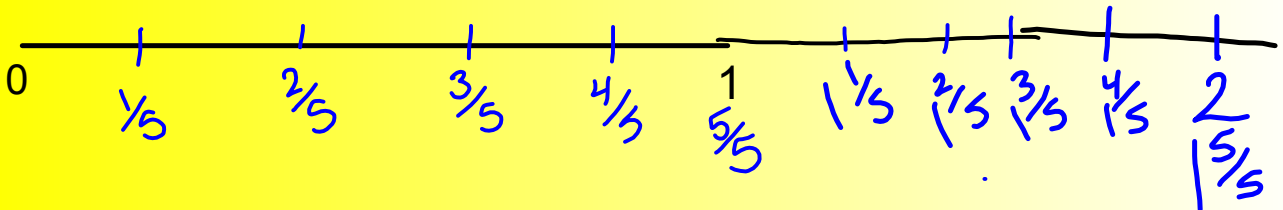
How do you know?

- a) $\frac{3}{4}$, $\frac{6}{7}$ b) $-\frac{3}{4}$, $-\frac{6}{7}$
c) $-\frac{6}{7}$, $-\frac{7}{6}$ d) $-\frac{9}{5}$, $\frac{5}{9}$

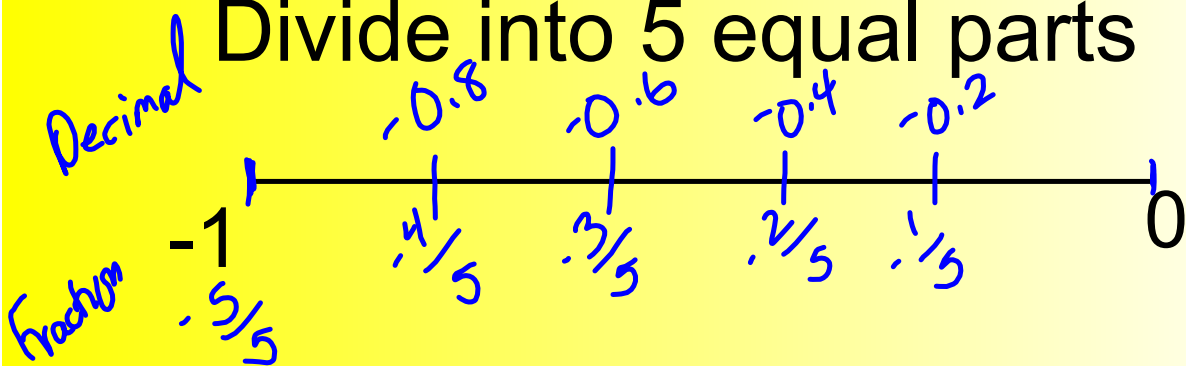
Quick Check

You may use your scribbler/textbook

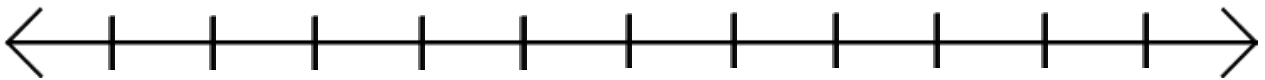
Divide into 5 equal parts



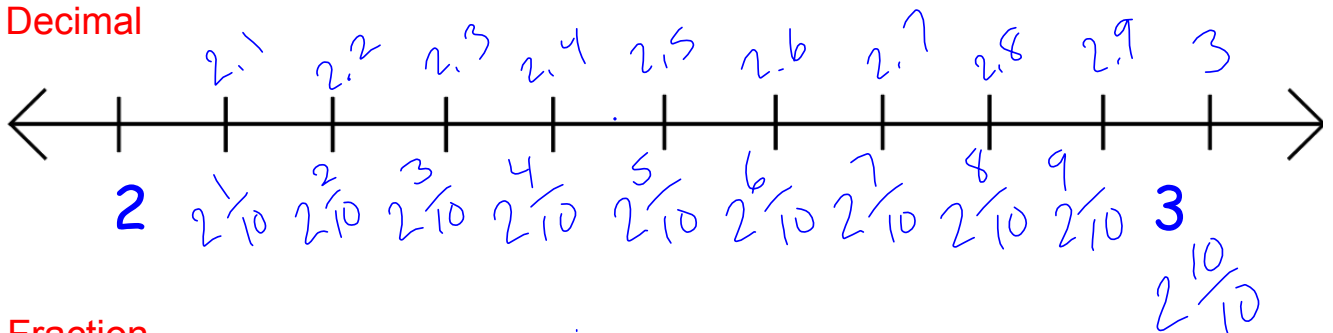
Divide into 5 equal parts



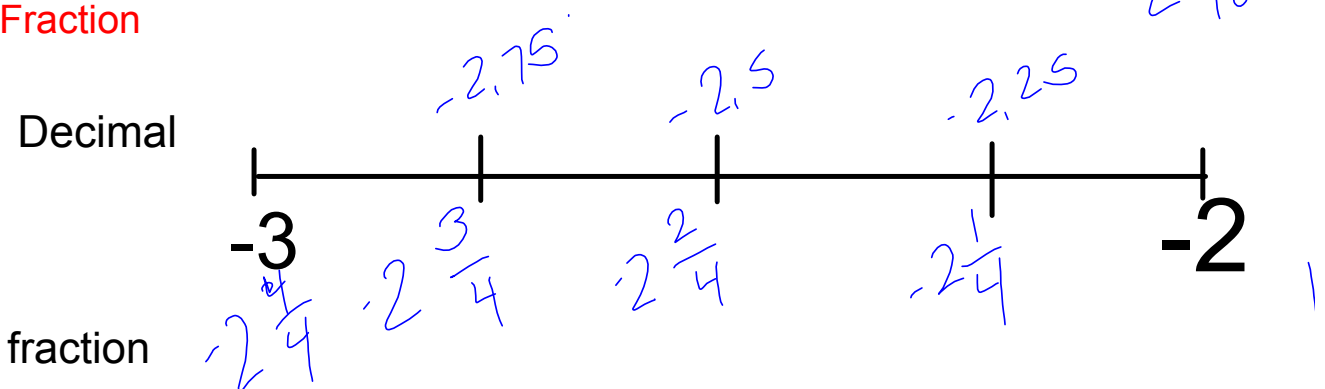
Let's look at Rational numbers on a number line...

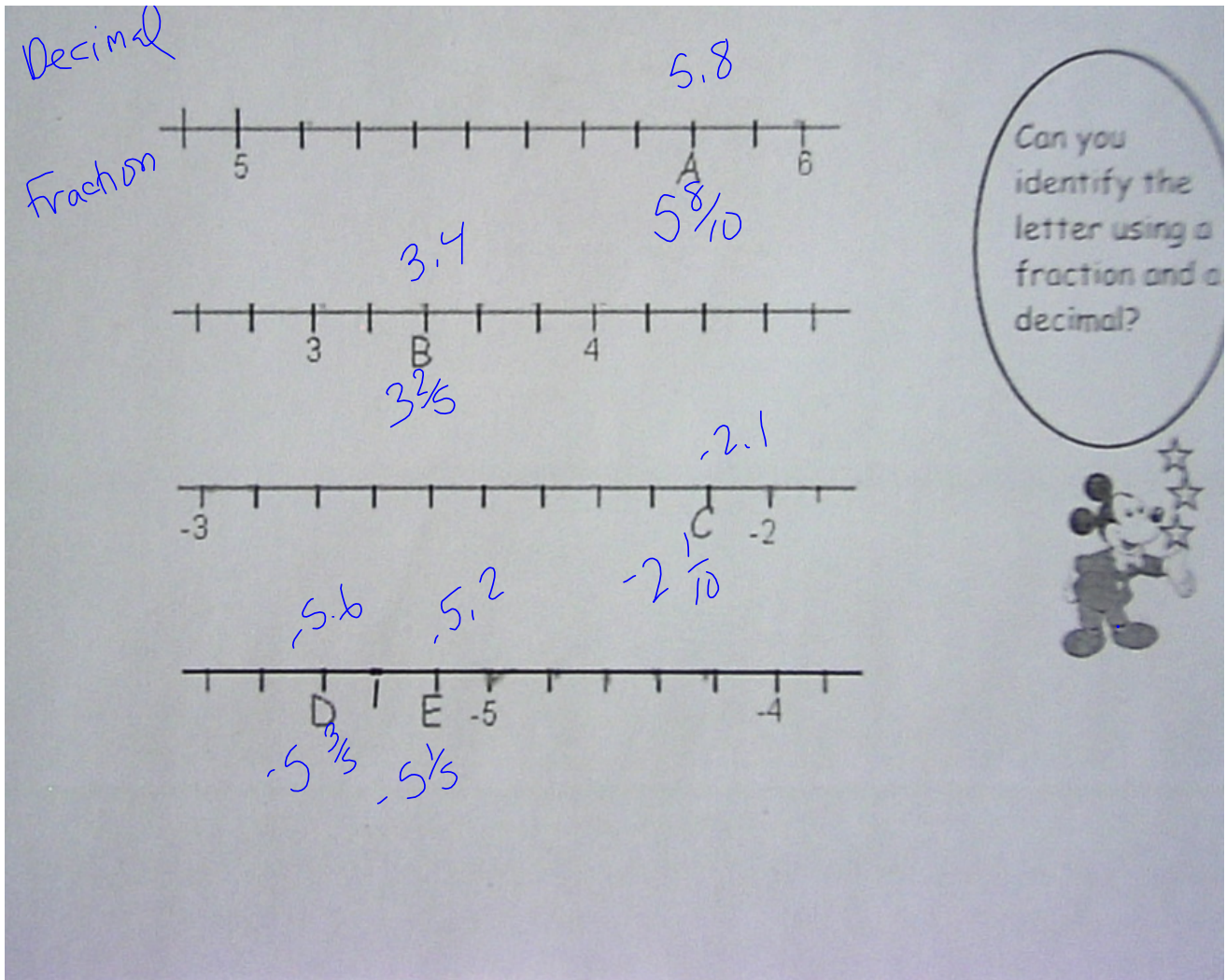


Decimal



Fraction





Can you order
the numbers
from least to
greatest.

small \rightarrow Big

original

0.35, 2.5, ~~-0.6~~, 1.7, ~~-3.2~~, ~~-0.6~~

-3.2, $\overline{-0.6}$, -0.6, 0.35, 1.7, 2.5

Order these rational numbers from least to greatest

$$1.13, \frac{-10}{3}, -3.4, 2.7, \frac{3}{7}$$

Handwritten annotations: -3.33 above $\frac{-10}{3}$, 0.43 above $\frac{3}{7}$. Blue lines are drawn through $\frac{-10}{3}$ and -3.4 .

Record your answer in its original format!

$$-3.4, \frac{-10}{3}, \frac{3}{7}, 1.13, 2.7$$