

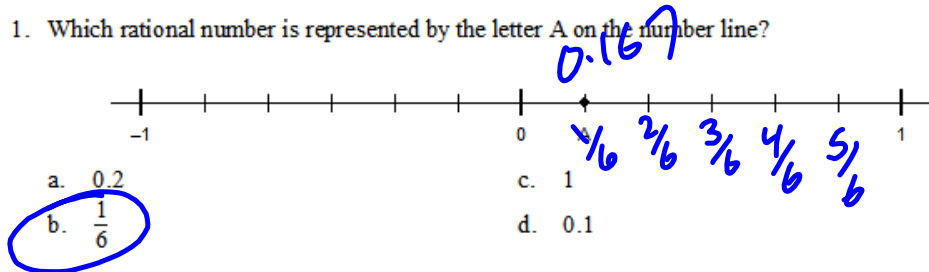
Warm-up

September 17, 2015

**Multiple Choice**

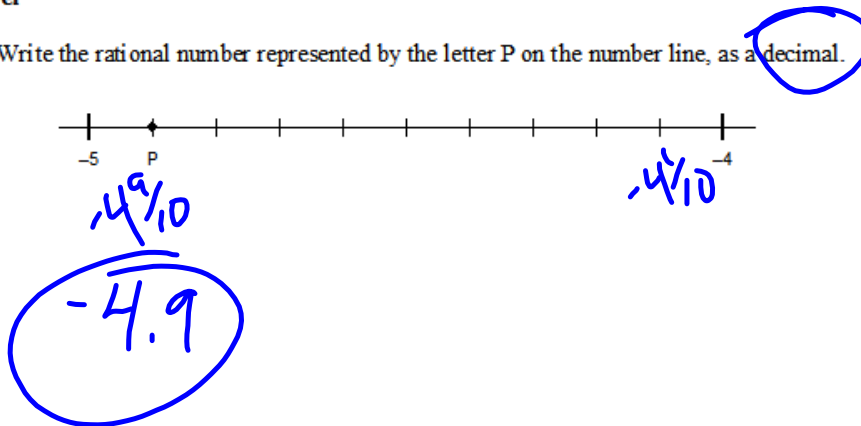
Identify the choice that best completes the statement or answers the question.

1. Which rational number is represented by the letter A on the number line?



**Short Answer**

2. Write the rational number represented by the letter P on the number line, as a decimal.



**Homework Any  
Questions???**

11. a)  $-\frac{1}{6}$

b)  $\frac{7}{15}$

c)  $-\frac{79}{20} = -3\frac{19}{20}$

d)  $\frac{71}{10} = 7\frac{1}{10}$

e)  $-\frac{49}{12} = -4\frac{1}{12}$

f)  $-\frac{31}{30} = -1\frac{1}{30}$

g)  $\frac{7}{8}$

h)  $-\frac{23}{6} = -3\frac{5}{6}$

i)  $-\frac{65}{12} = -5\frac{5}{12}$

j)  $\frac{29}{40}$

## Section 3.3 Subtracting Rational Numbers

Subtract the following:

$$\begin{array}{l} -8 - (-3) \\ -8 + 3 \\ -5 \end{array}$$

$$\begin{array}{l} \frac{-8}{10} - \frac{-3}{5} \\ \frac{-8}{10} - \frac{-6}{10} \\ \frac{-2}{10} = \frac{-1}{5} \end{array} \left. \begin{array}{l} \frac{-8}{10} + \frac{6}{10} \\ \frac{-2}{10} \end{array} \right\}$$

Express all answers in lowest terms:

Mixed # if needed.

$$\frac{-3}{6} - \frac{7}{-3}$$

$$\frac{-3}{6} - \frac{-7}{3^{+2}}$$

$$\frac{-3}{6} + \frac{14}{6}$$

$$\frac{11}{6} = 1\frac{5}{6}$$

$$\frac{-3}{6} - \frac{-14}{6}$$

$$\frac{11}{6} = 1\frac{5}{6}$$

$$-5\frac{3}{4} - (-2\frac{1}{2})$$

$$\frac{-23}{4} - \frac{-5}{2} \times 2$$

$$\frac{-23}{4} - \frac{-10}{4}$$

$$\frac{-13}{4} = -3\frac{1}{4}$$

$$\frac{-23}{4} + \frac{10}{4}$$

$$\frac{-13}{4}$$

$$-3\frac{3}{4} - 2\frac{1}{3}$$
$$\overset{\times 3}{\times 3} - \frac{15}{4} - \overset{\times 4}{\times 4} \frac{7}{3 \times 4}$$

$$-\frac{45}{12} - \frac{28}{12}$$

$$-\frac{73}{12} = -6\frac{1}{12}$$

$$\begin{aligned} & -\frac{5}{4} - \left(-3\frac{1}{5}\right) + 4\frac{1}{10} \\ & \overset{x^5}{-} \frac{5}{4} - \overset{x^4}{-} \frac{16}{5} + \frac{41}{10} \overset{x^2}{x^2} \\ & \frac{-25}{20} - \frac{-64}{20} + \frac{82}{20} \\ & \frac{121}{20} = 6\frac{1}{20} \end{aligned}$$







Page 119

9, d, e, f

13 (a, c)

a)  $1\frac{23}{30}$

c)  $4\frac{43}{60}$

q. d)  $-4\frac{1}{24}$

e)  $3\frac{1}{3}$

f)  $2\frac{5}{24}$

3

52

# Worksheet odd

1, 5, 9

Assignment \_\_\_\_\_ Date \_\_\_\_\_

Find each difference.

1) $1 - \left(-\frac{1}{3}\right)$	2) $\frac{1}{2} - \frac{1}{2}$
3) $3\frac{1}{4} - \left(-2\frac{4}{5}\right)$	4) $(-6) - \left(-\frac{7}{8}\right)$
5) $\frac{1}{3} - \left(-\frac{1}{2}\right)$	6) $\left(-2\frac{2}{3}\right) - \frac{3}{5}$
7) $\left(-3\frac{1}{3}\right) - \left(-5\frac{2}{3}\right)$	8) $(-4) - \frac{5}{4}$
9) $\frac{3}{2} - 4\frac{1}{6}$	10) $\frac{7}{8} - \frac{1}{3}$

---

Answers: 1.  $1\frac{1}{3}$  2. 0 3.  $6\frac{1}{20}$  4.  $-5\frac{7}{8}$  5.  $\frac{5}{6}$  6.  $-3\frac{4}{15}$   
 7.  $2\frac{2}{3}$  8.  $-5\frac{1}{4}$  9.  $-2\frac{2}{3}$  10.  $1\frac{1}{24}$

$\frac{5}{1} - \frac{8}{7}$  (01)       $\frac{6}{1} - \frac{4}{2}$

