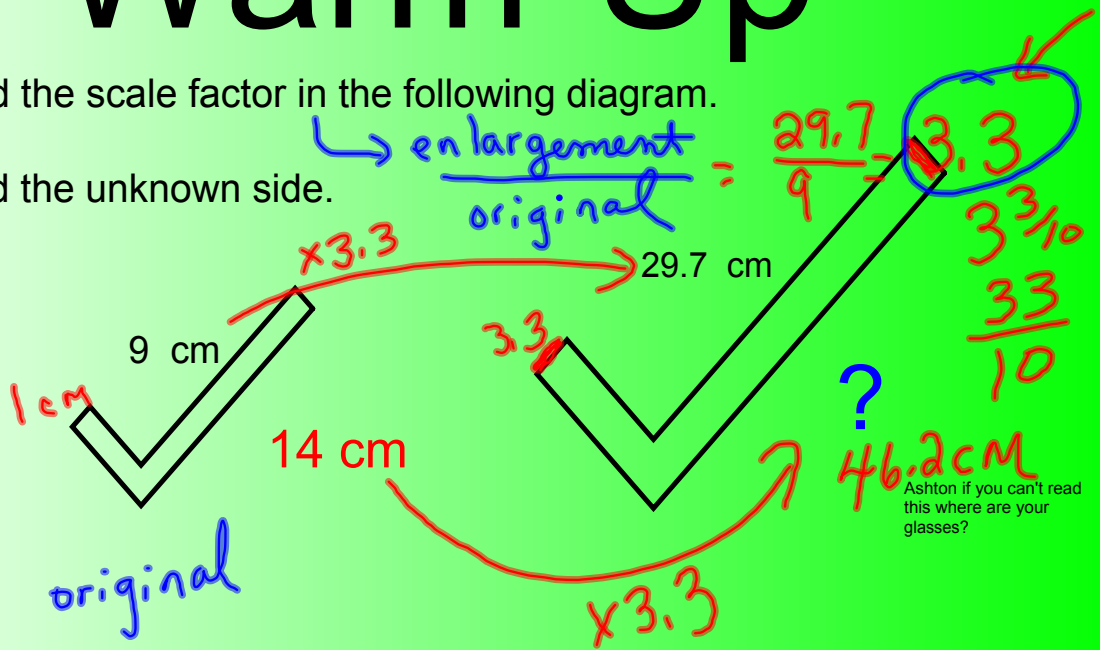


Warm-Up

A. Find the scale factor in the following diagram.

B. Find the unknown side.



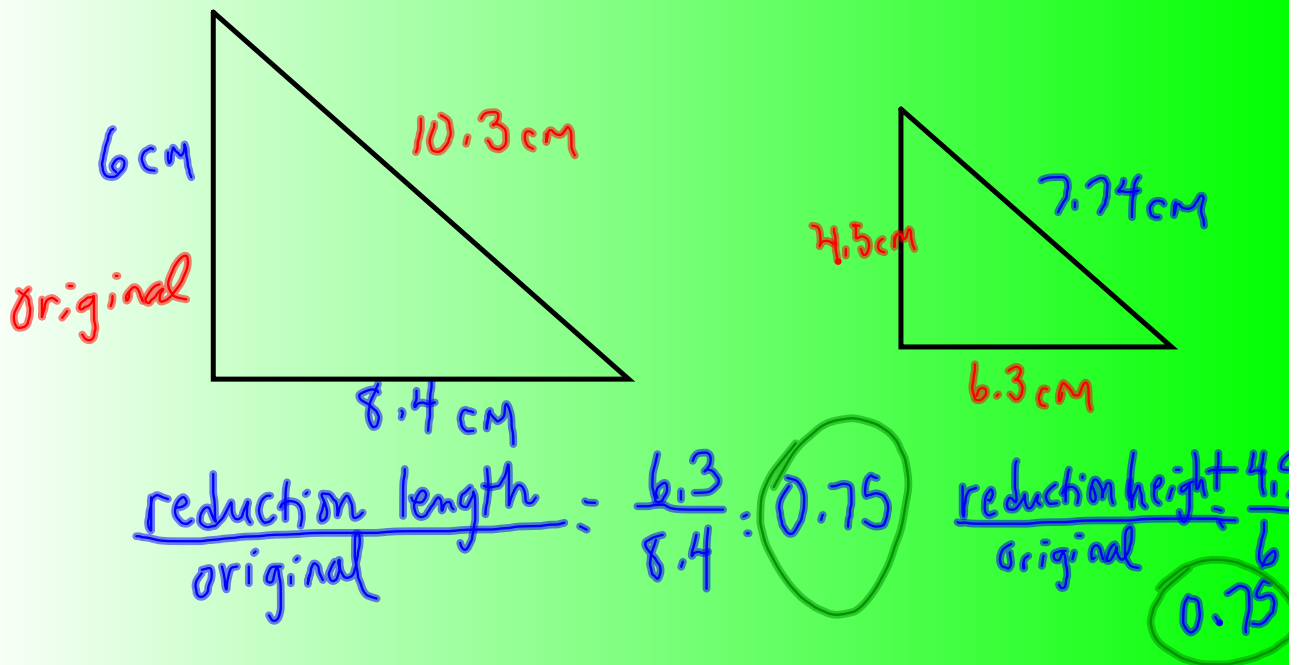
Section 7.2

Scale diagrams and Reductions

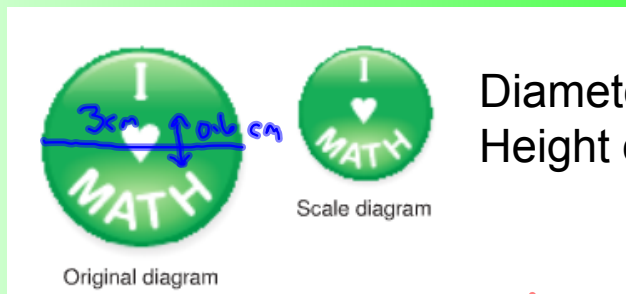
Here is a map of Victoria Island from the Internet.
What is the scale on the map? How is the scale used?



On Grid paper draw a right angle triangle that has a height of 6 cm and a length of 8.4 cm
 Find the scale factor:



Draw a second right angle triangle that has a height of 4.5 cm and a length of 6.3 cm



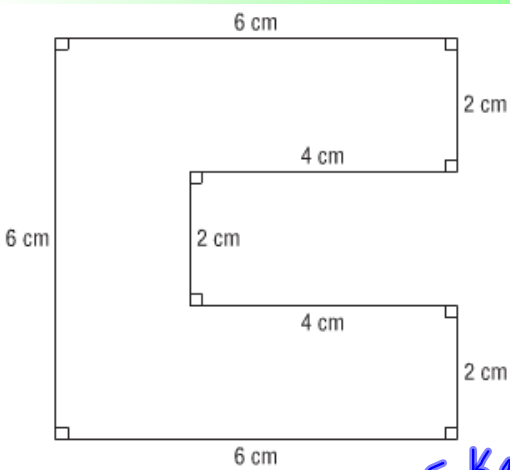
Diameter of circle 2 cm
 Height of heart is 0.4 cm

Diameter of circle 3 cm
 height of heart 0.6 cm

$$\frac{\text{height reduction}}{\text{height original}} = \frac{0.4}{0.6} = 0.7$$

Find the scale factor:

$$\frac{\text{diameter reduction}}{\text{diameter original}} = \frac{2}{3} = 0.67$$



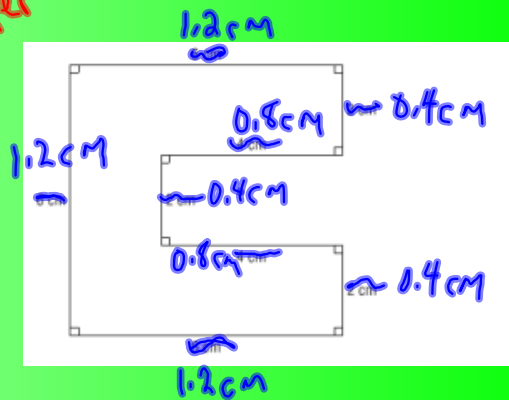
Draw a scale diagram of the following. Use a scale factor of 0.2

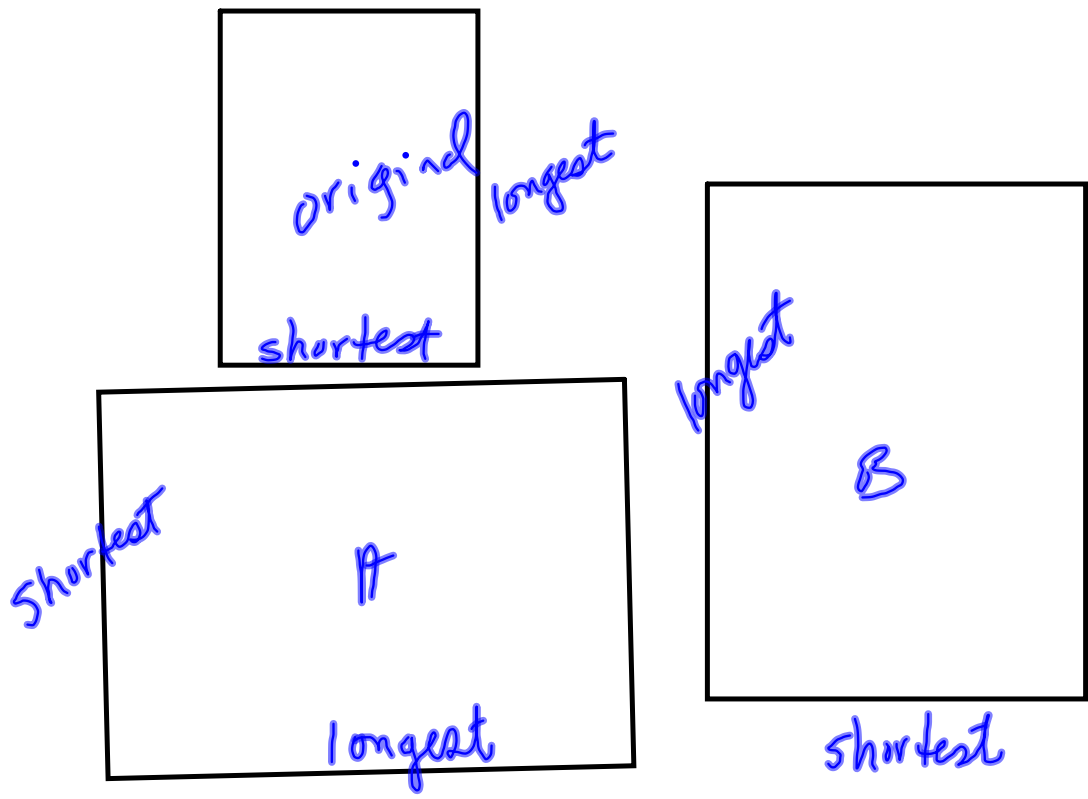
Grid

Sketch
scribble

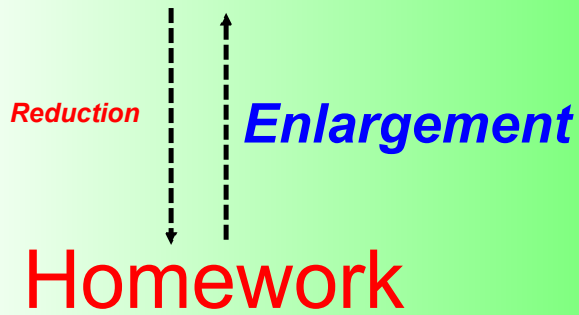
What is the reduction as a percent?

20%





Homework



Page 329

4,5,6,7,8

↑
add
third column
for scale
factor