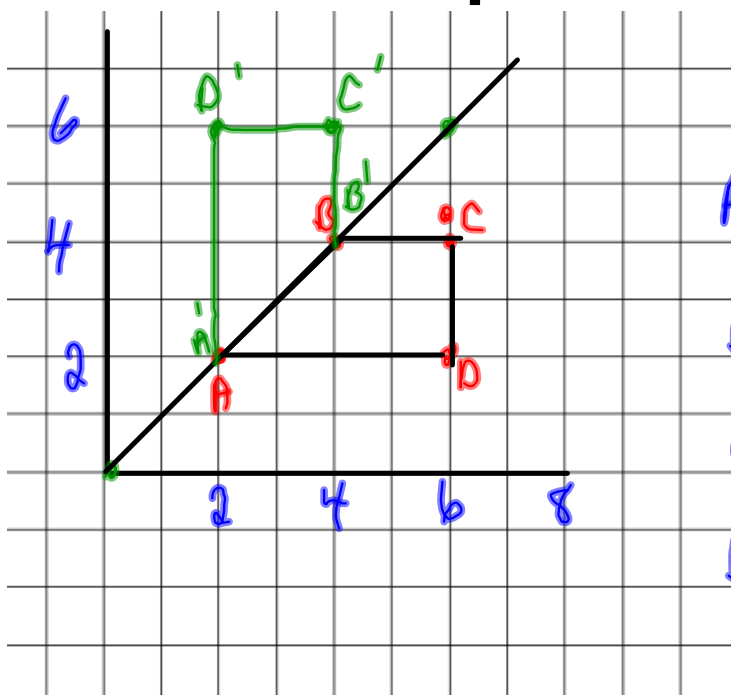


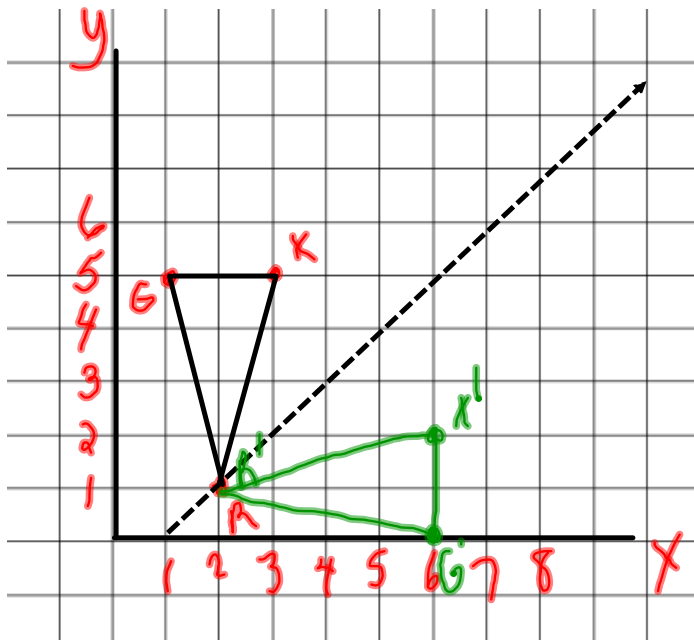
# Warm-Up [cont'd from Friday]



$ABCD$	$A'B'C'D'$
$A(2,2)$	$A'(2,2)$
$B(4,4)$	$B'(4,4)$
$C(6,4)$	$C'(4,6)$
$D(6,2)$	$D'(2,6)$

Plot the following points: G (1,5) R (2,1) X(3,5)

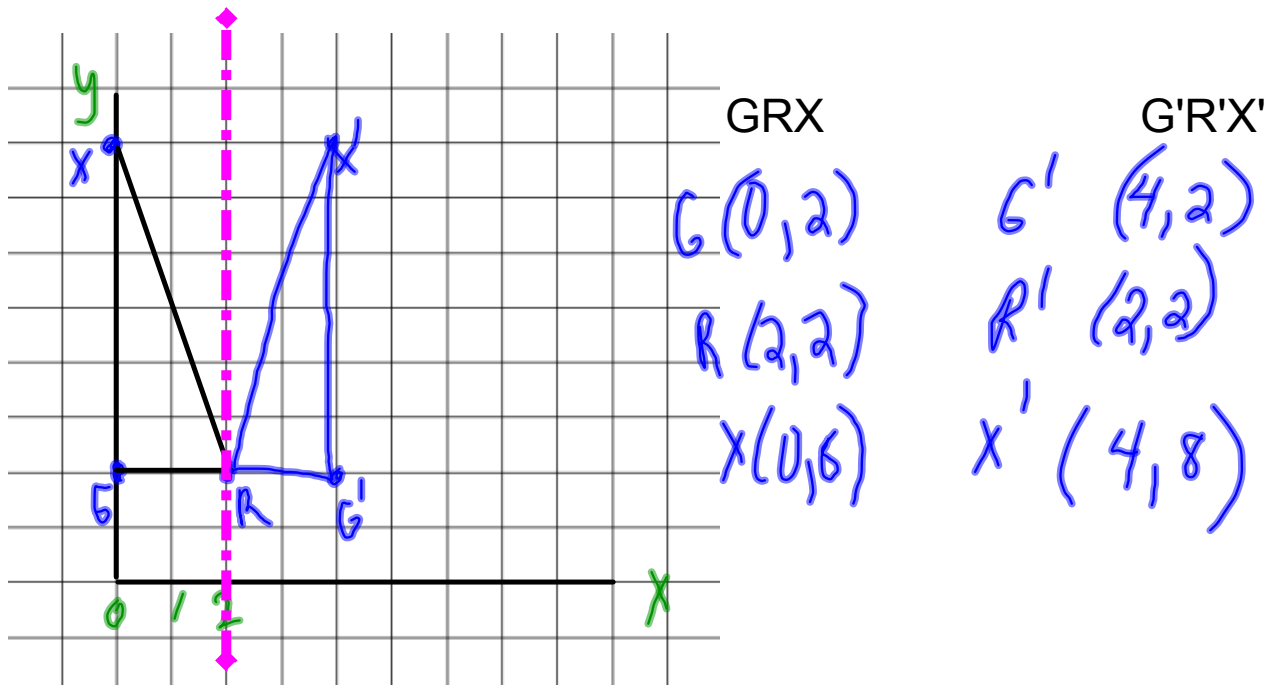
B. Draw a reflection through the line passing between (1,0) and (4,3)



G (1,5) G' (6,0)  
R (2,1) R' (2,1)  
X (3,5) X' (6,2)

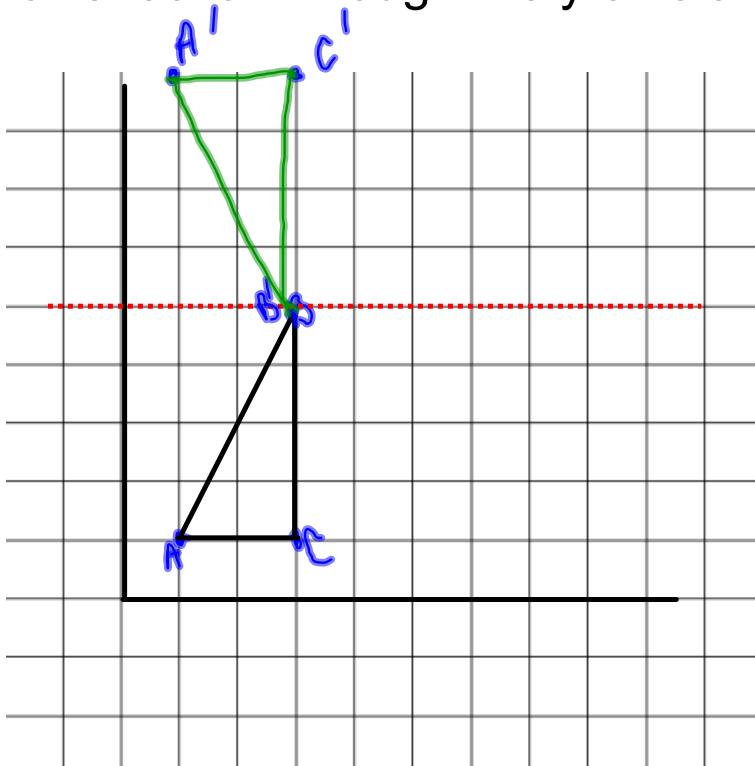
Plot the following points: G (0,2) R (2,2) X (0,8)

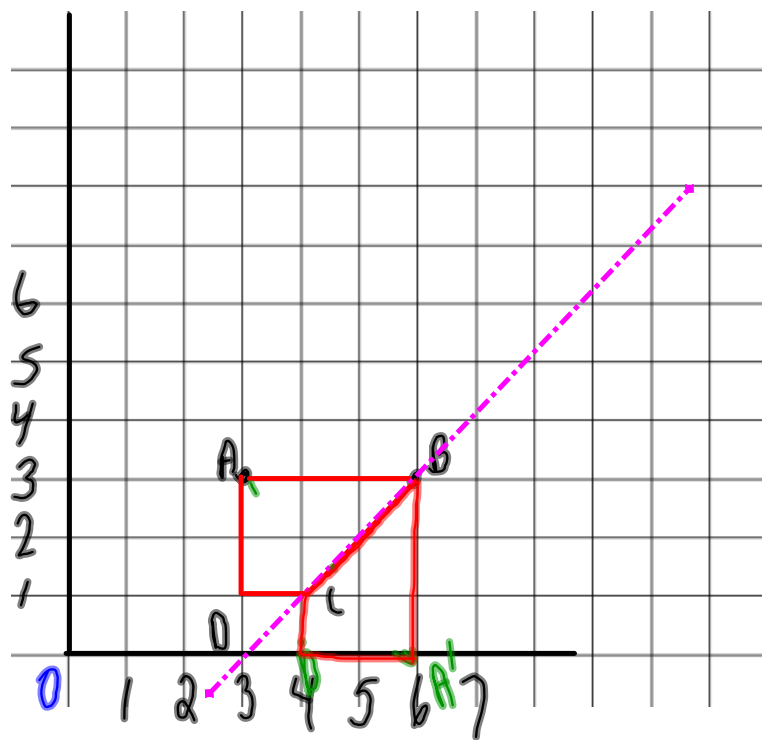
A. Draw a reflection through 2 on x axis



Plot the following points: **A** (1,1), **B** (3,5) and **C** (3, 1)

Draw a reflection through the y-axis at 5





- A (3,3)
- B (6,3)
- C (4,1)
- D (3,1)

Line of reflection  
through points  
(4,1) and (6,3)

# Homework Homework

Page 358 #5,6,8,9,10,11