

1) Make 32 0 divisible by 4.

2)  $\frac{2a}{4} = 3$       324      228

3) 25% of \$12.00  $\div 4 = 53$

4)  $2m + 3 = 9$ ,  $m = ?$

$2 \times 3 + 3 =$

5) two more than four times a number

$4n + 2$        $2 + 4n$

6) Write the equation  | 

7)  $(-8) + (-2) = -6$        $n - 3 = 10$

8) Substitute  $b = 3$ ,  $2b + 1$

$2 \times 3 + 1$

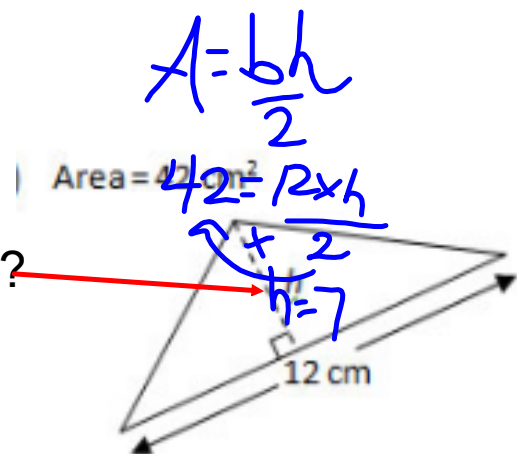
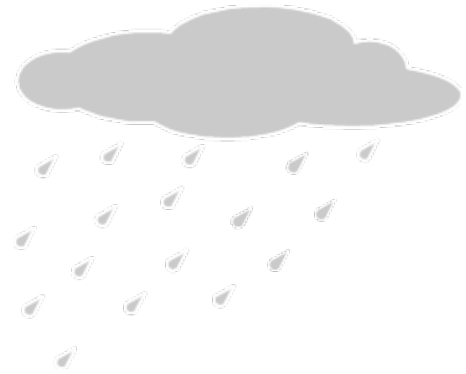
9) What is the height of the triangle?

$6 + 1 = 7$

10) Write the expression:

3 less than 5 times a number

$5n - 3$



S  
O  
L  
V  
E

1)

$s+3 = -6 \checkmark \quad -6 = s+3 \checkmark$

2)

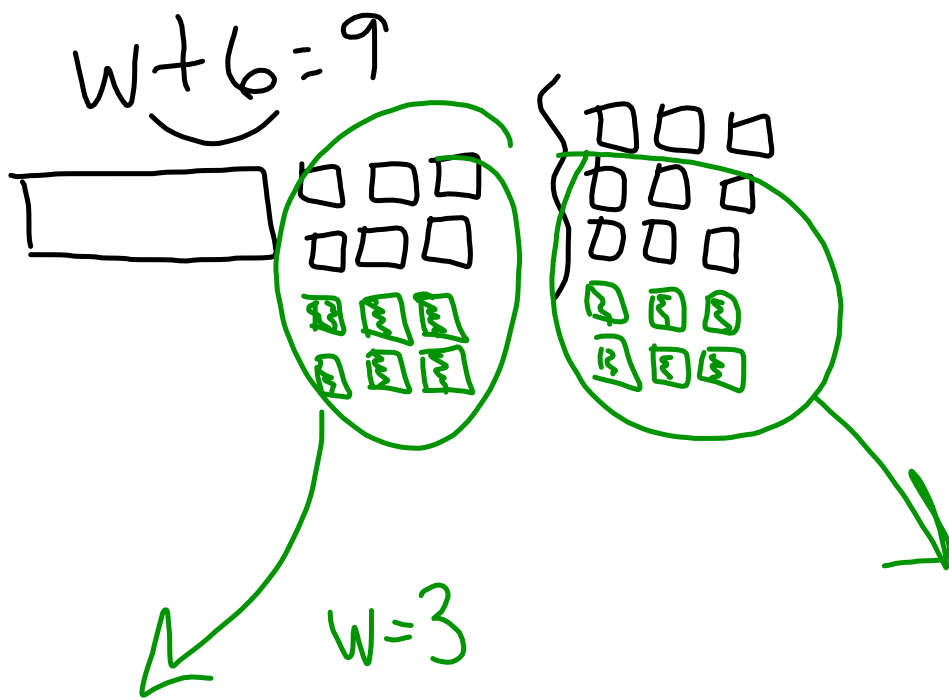
$x+5=5$

3)

$x-4=-1 \rightarrow$

4)

$2x-4=-1$



1. Use tiles to solve each equation.

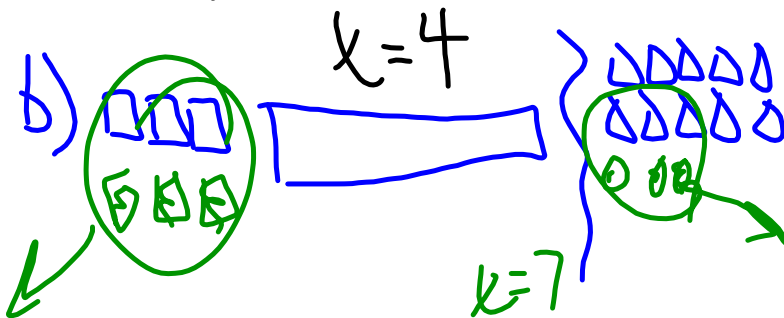
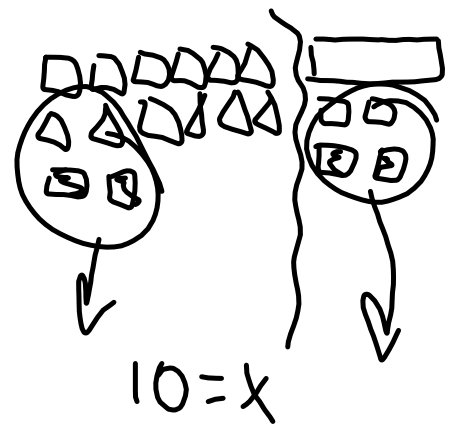
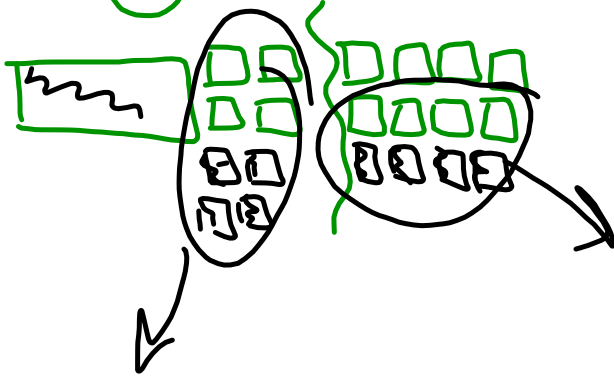
Sketch the tiles you used.

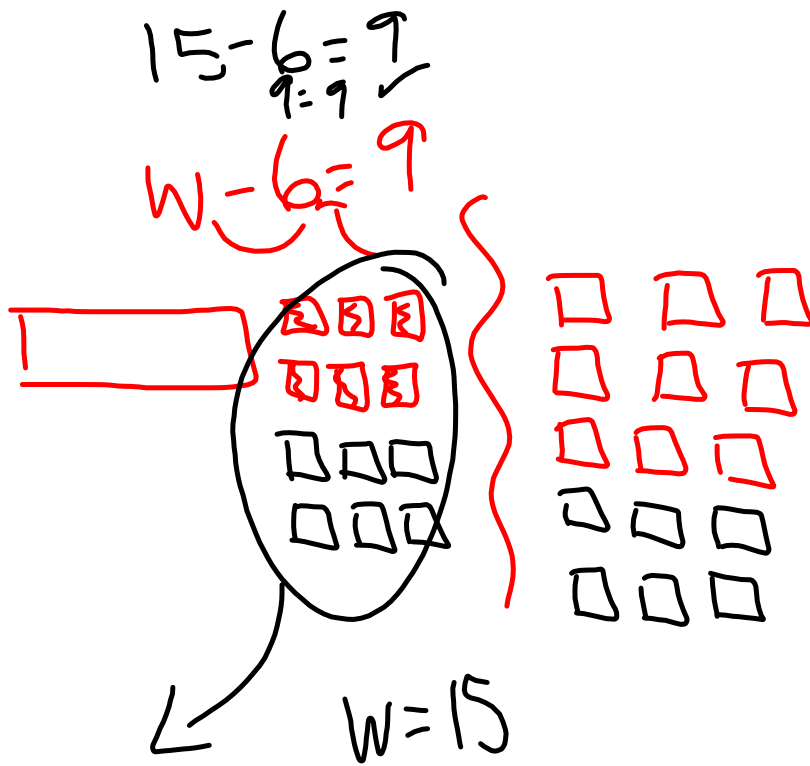
a)  $x + 4 = 8$

b)  $3 + x = 10$

c)  $12 = x + 2$

p. 234

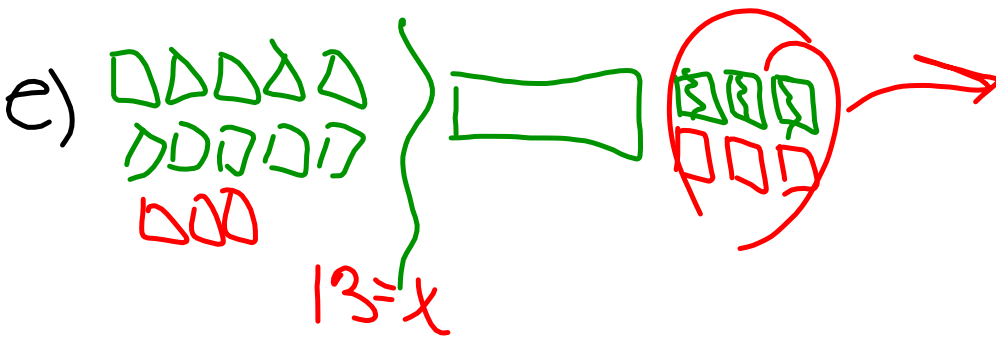
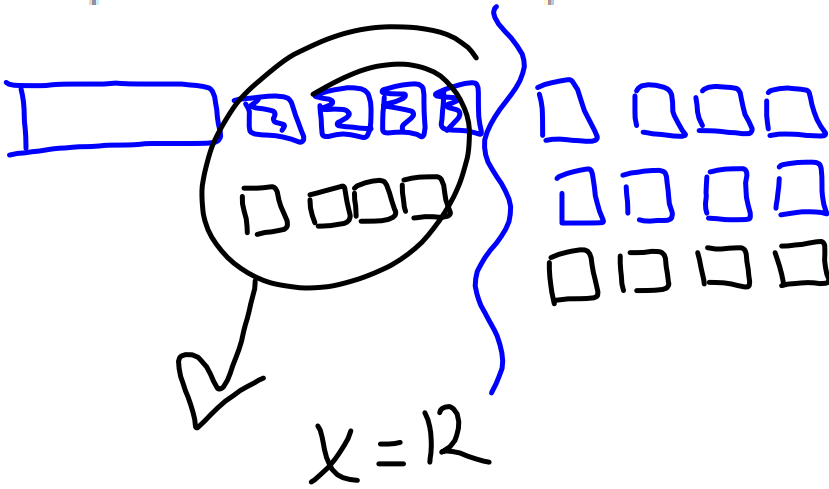




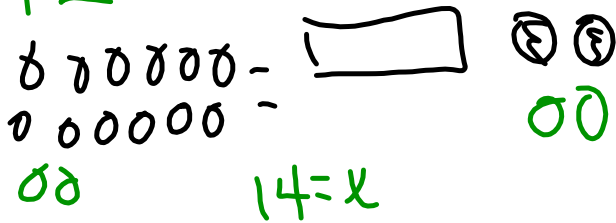
d)  $x - 4 = 8$

e)  $10 = x - 3$

f)  $12 = x - 2$



f)  $12 = x - 2$



2. Solve by inspection. Show your work.

a)  $9 = n - 4$

$$n = 13$$

b)  $x + 6 = 8$

$$x = 2$$

$$p - 5 = 2$$

c)  $2 = p - 5$

$$p = 7$$

$$d) x - 4 = -9$$

$$x - 4 = -9$$

$$x = -5$$

$$x = -15$$

$$x - 4 = -9$$

$$x = -5$$

$$e) -8 = s + 6$$

$$s = -14$$

$$f) x - 5 = -2$$

$$x - 5 = -2$$

$$x = 3$$



3. Four less than a number is 13.

Let  $x$  represent the number.

Then, an equation is:  $x - 4 = 13$

Solve the equation. What is the number?

$$\boxed{x - 4 = 13}$$
$$x - 4 + 4 = 13 + 4$$
$$x = 17$$

4. Jody had some friends over to watch movies.  
Six of her friends left after the first movie.  
Five friends stayed to watch a second movie.  
Write an equation you can use to find how many  
of Jody's friends watched the first movie.  
Solve the equation. Verify the solution.



$$n - 6 = 5$$

$$n = 11$$

$$11 - 6 = 5$$

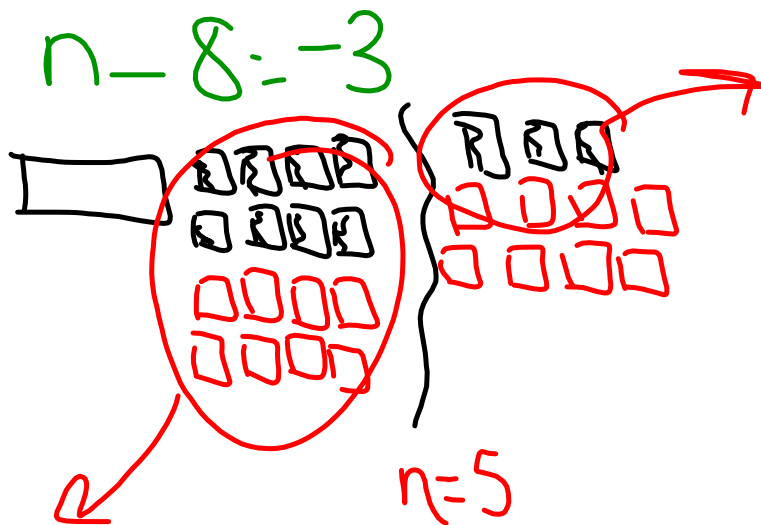
$$5 = 5$$

5. Overnight, the temperature dropped  $8^{\circ}\text{C}$  to  $-3^{\circ}\text{C}$ .

a) Write an equation you can solve to find the original temperature.

b) Use tiles to solve the equation.

Sketch the tiles you used.



6. **Assessment Focus** Solve each equation using tiles, and by inspection. Verify each solution. Show your work.

a)  $x + 6 = 13$

$$x = 7$$

b)  $n - 6 = 13$

$$n = 19$$

$$8 = n - 6$$

$$n = 14$$

$$8 = 14 - 6$$

$$8 = 8$$

$$9 - 2 = 7$$

$$a = 9$$

$$9 - 2 = 7$$

$$7 = 7$$

Work booklets - Check out the 2nd page

If you finish-



page 248 - questions 1, 2, 3, 6, 11,



12, 15, 16



