

1) BEDMAS: $6 + 2 \times 2 = 10$

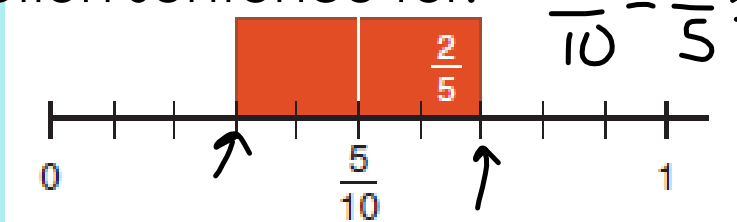
2) $0.5 \times 29 = 14.5$

3) $\$2.75 + \$2.35 = 5.10$ 2^2



4) Write a subtraction sentence for: $\frac{7}{10} - \frac{2}{5} = \frac{3}{10}$

*



5) $63 \div 9 = 7$

6) $0.7 \times 3 = 2.1$

7) Change to a Mixed Fraction:

$$\frac{17}{3} = 5 \frac{2}{3}$$

$$3^2 = 3 \times 3$$

$$3^4 = 3 \times 3 \times 3 \times 3$$

8) $11 \times 20 = 220$

9) $8004 \div 2 = 4002$

10) What is a common denominator for $\frac{2}{3}$ and $\frac{5}{7}$? $= 21$

Friday

$$\frac{5}{10}^x$$

p. 207

1-a, c
4-all
6-b, d

$$\frac{11}{2} \text{ ; } \textcircled{!}$$

p. 208
ques 8, 9
11-b, d

$$3\frac{2}{4}$$

* Common
denomin.
* Lowest
terms



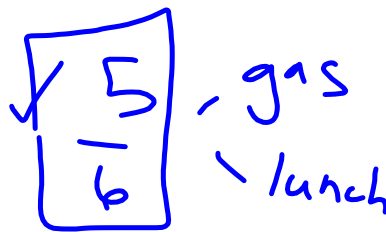
* Practise

213-q. 6,
214-q. 13-pick 2
8. 15, 16-pick 2
17, 19

13-q. 6,
14-q. 13-pick 2
8. 15, 16-pick 2
17, 19

p. 215- 4, 5

* Practise
 213 - p. 6,
 214 - p. 13 - pick 2
 8, 15, 16 - pick 2
 17, 19
 p. 215 - 4, 5



$$5\frac{1}{6} + ? = 6$$

drove - $5\frac{1}{6}$ h

$$\left(6\frac{1}{4}\right)$$

trip - 6h

add to $\frac{1}{6}$

$$6 - 5\frac{1}{6} = \frac{5}{6}$$

$$5 + 2 = 7$$

$$10 - 7 = 3$$

10 loaves

$$70 - 51.$$

$$70 - 21.$$

$$\frac{\quad}{7}$$

