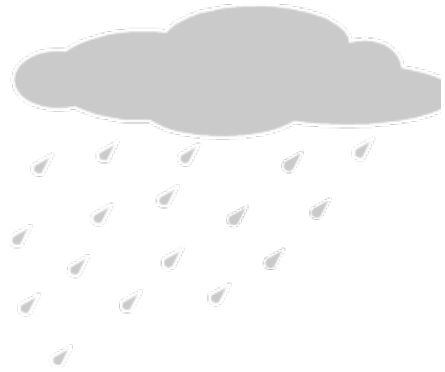


- 1) Make 80\_\_\_ divisible by 3.  $801$
- 2)  $\$13.50 \times 10 = 135.00$   $804$
- 3) 20% of  $\$125.00 = 25$   $807$
- 4) What is 5% written as a decimal?  $0.05$
- 5) What type of decimal is 123.7?  $t$
- 6) How many  $\frac{1}{2}$  hours in  $6 \frac{1}{2}$  hours?  $13$



7)  $(+3) + (+3) = +6$

8) Which is greater -  $\frac{1}{5}$  or  $\frac{1}{3}$ ?

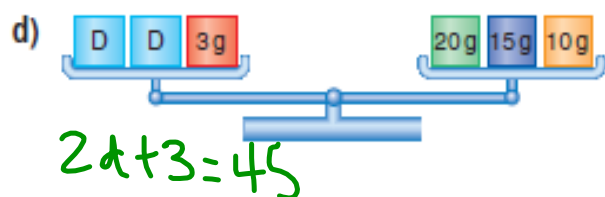
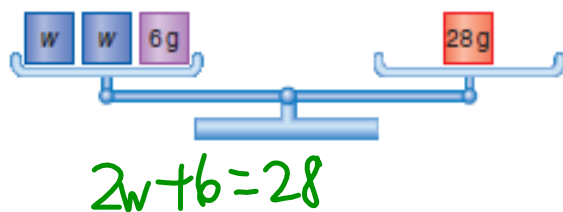
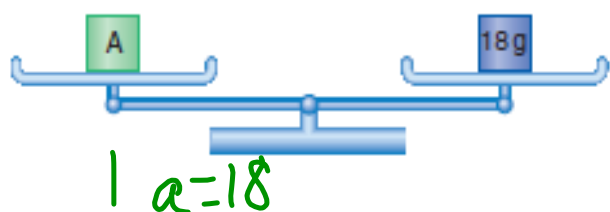
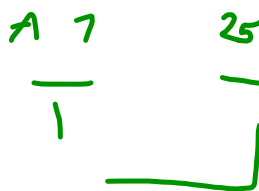
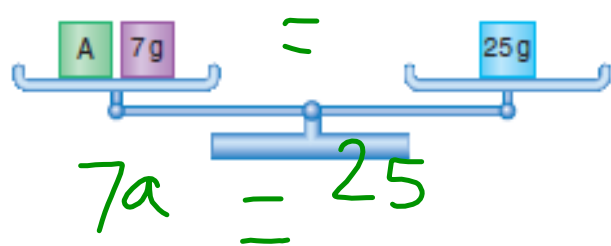


$A = \frac{bh}{2}$

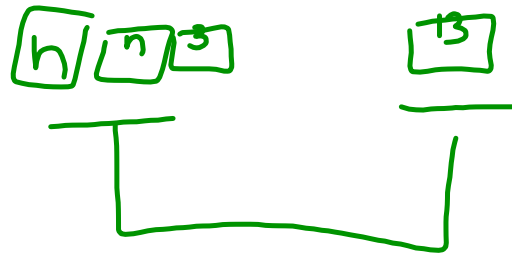
$32 = \frac{b \cdot 4}{2}$   
 $= 16$

9) What is the base?

10) Write the expression:  
5 less than 2 times a number



$$2n + 3 = 13$$
$$2n + \cancel{3} - 3 = 13 - 3$$
$$\frac{2n = 10}{2 \quad 2}$$
$$n = 5$$



- 1) Jaclyn hiked 5 km the first day. After two days she had hiked 12 km. How far did she hike on the second day?

$$h + 5 = 12$$

$$h + 5 - 5 = 12 - 5$$

$$h = 7$$

Jaclyn counted squirrels. During the first three days, she counted a total of 67 squirrels. After four days, her total was 92 squirrels. How many squirrels did she see on the fourth day?

$$n + 67 = 92$$

$$n + 67 - 67 = 92 - 67$$

$$n = 25$$

Andre's age is 14 more than twice Bill's age. Andre is 40 years old. How old is Bill? Write an equation you can use to solve this problem. Solve the equation using a balance-scales model.

$$2n + 14 = 40$$

$$2n + 14 - 14 = 40 - 14$$

$$\frac{2n}{2} = \frac{26}{2}$$

$$n = 13$$

Complete work booklet :)

$$b + h + b + h = 44$$

$$2b + 2h = 44$$

If you finish, check over AND make

any corrections

$$2h + 2b = 44$$

$$2h + 2(8) = 44$$

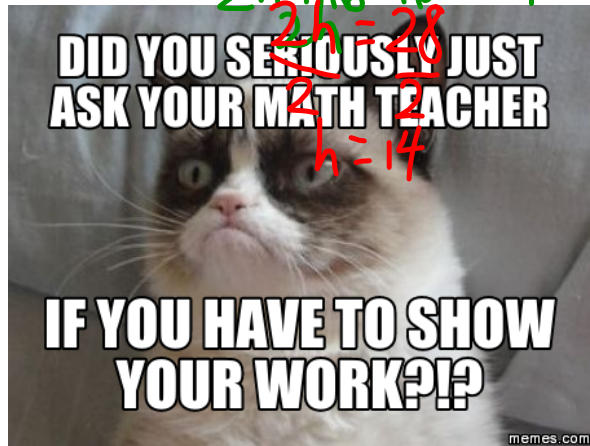
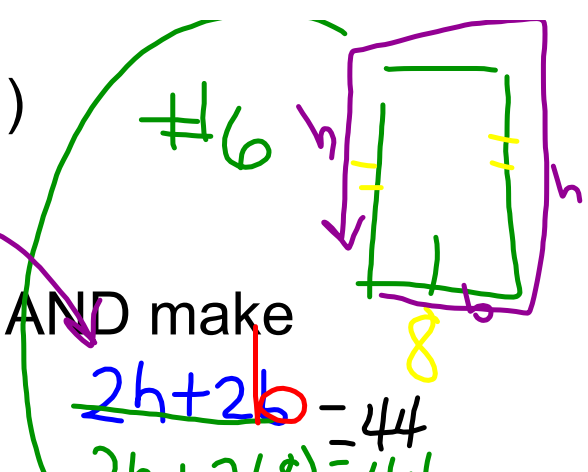
$$2h + 16 = 44$$

$$2h + 16 - 16 = 44 - 16$$

You may do other homework

OR read quietly

$$2(8) + 2h = 44$$







$$\frac{24}{6} = 4$$

$$n=24$$